

OAXACA

---RED FEDERAL LIBRE---

1 Acceso al Puerto Salina Cruz	MEX-090
2 Buenavista - Tuxtepec	MEX-175
3 Cd. Alemán - Sayula	MEX-145
4 Coatzacoalcos - Salina Cruz	MEX-185
5 Ent. La Ventosa - San Pedro Tapanatepec	MEX-190
6 Huajuapán de León - Oaxaca	MEX-190
7 Juchitán - Ixtepec	MEX-185
8 La Granja - Temascal	MEX-145
9 Las Cruces - Pinotepa Nacional	MEX-200
10 Libramiento de Ejutla	MEX-175
11 Libramiento de Ocotlán Oax.	MEX-175
12 Libramiento de Palomares	MEX-185
13 Libramiento de Pochutla	MEX-200
14 Libramiento de San Pedro Tapanatepec	MEX-200
15 Libramiento de Santa María del Tule	MEX-190
16 Oaxaca - Puerto Ángel	MEX-175
17 Oaxaca - Tehuantepec	MEX-190
18 Puebla - Huajuapán de León	MEX-190
19 Ramal a Asunción Ixtaltepec	MEX-185
20 Ramal a Monte Albán	MEX-190
21 Ramal a Refinería Pemex (Refinería del Pacífico)	MEX
22 San Pablo Villa de Mitla - T. C. (Tuxtepec - Palomares)	MEX-179
23 Santiago Pinotepa Nacional - Salina Cruz	MEX-200
24 Tapanatepec - Talismán	MEX-200
25 Tapanatepec - Tuxtla Gutiérrez	MEX-190
26 Tehuacán - Huajuapán de León	MEX-125
27 Tuxtepec - Ent. Palomares	MEX-147
28 Tuxtepec - T. C. (Oaxaca - Tehuantepec)	MEX-175
29 Yucudaa - Santiago Pinotepa Nacional	MEX-125

---RED FEDERAL DE CUOTA---

30 Barranca Larga - Ventanilla (Cuota)	MEX-175D
31 Cuacnopalan - Oaxaca (Cuota)	MEX-135D
32 Mitla - Tehuantepec (Cuota)	MEX-190D
33 Salina Cruz - La Ventosa (Cuota)	MEX-185D

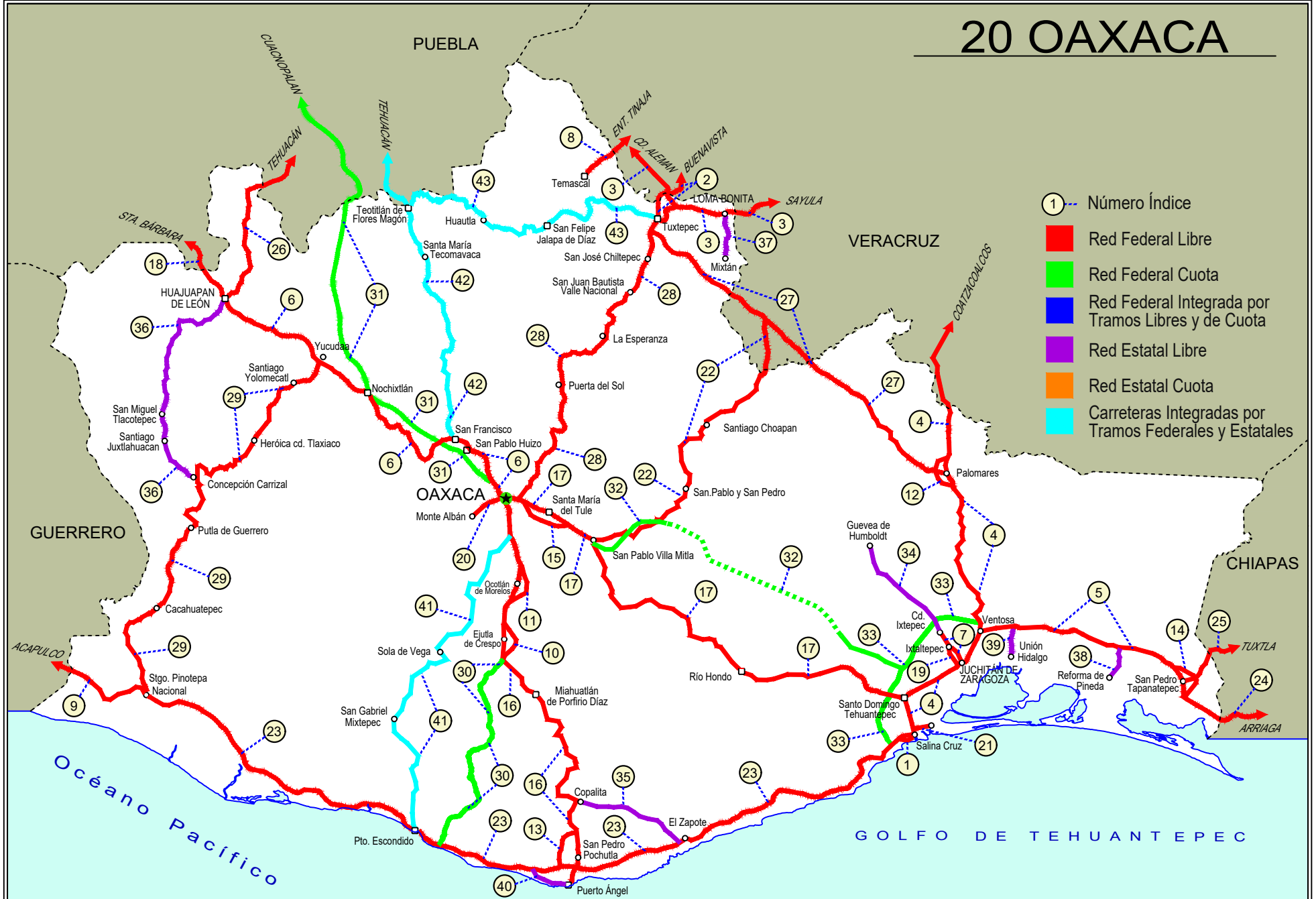
---RED ESTATAL LIBRE---

34 Cd. Ixtepec - Guevea de Humboldt	OAX
35 El Zapote - Copalita	OAX
36 Huajuapán de León - El Carrizal	OAX
37 Loma Bonita - Mixtán	OAX
38 Ramal a Reforma de Pineda	OAX
39 Ramal a Unión Hidalgo	OAX
40 San Antonio - Puerto Ángel	OAX

---CARRETERAS INTEGRADAS POR TRAMOS FEDERALES Y ESTATALES---

41 T. C. (Oaxaca - Puerto Ángel) - Puerto Escondido	MEX-OAX-161
42 Tehuacán - Huitzo	PUE-MEX-135
43 Teotitlán de Flores Magón - Tuxtepec	OAX-PUE-MEX-182

20 OAXACA



OAXACA

1 CARR: Acceso al Puerto Salina Cruz

CLAVE:

RUTA: MEX-090

AÑO: 2025

LUGAR	ESTACION				CLASIFICACION VEHICULAR EN PORCIENTO														COORDENADAS	
	KM	TE	SC	TDPA	M	A	B	C2	C3	T3S2	T3S3	T3S2R4	OTROS	A	B	C	K'	D	LATITUD	LONGITUD
T. C. Santiago Pinotepa Nacional - Salina Cruz	0.00	3	0	3175	7.4	85.9	0.9	3.5	1.0	0.8	0.2	0.2	0.1	93.3	0.9	5.8	0.076	0.571	16.177432	-95.217597
Salina Cruz	3.80																			

2 CARR: Buenavista - Tuxtepec

CLAVE: 00624

RUTA: MEX-175

AÑO: 2025

LUGAR	ESTACION				CLASIFICACION VEHICULAR EN PORCIENTO														COORDENADAS	
	KM	TE	SC	TDPA	M	A	B	C2	C3	T3S2	T3S3	T3S2R4	OTROS	A	B	C	K'	D	LATITUD	LONGITUD
T. C. Paso del Toro - Acayucan	0.00	3	0	1857	6.5	83.9	1.3	5.1	2.3	0.6	0.2	0.1	0.0	90.4	1.3	8.3	0.100	0.508	18.713306	-95.638007
Puente Tlacotalpan	1.55	2	0	1871	10.8	80.2	3.2	2.5	1.8	1.2	0.1	0.1	0.1	91.0	3.2	5.8	0.085	0.500	18.704579	-95.641360
Tlacotalpan	18.00	1	0	4096	16.5	75.7	0.8	4.6	1.0	0.7	0.3	0.4	0.0	92.2	0.8	7.0	0.136	0.523	18.614879	-95.644900
Tlacotalpan	18.00	3	0	3150	13.2	78.7	1.3	4.5	0.7	0.6	0.5	0.3	0.2	91.9	1.3	6.8	0.087	0.582	18.616436	-95.680674
Carlos A. Carrillo	56.00	1	0	5304	14.2	74.7	1.3	2.4	3.7	1.4	1.1	0.9	0.3	88.9	1.3	9.8	0.078	0.567	18.380206	-95.742760
Cosamaloapan	60.00	1	0	24862	15.4	80.2	0.7	1.2	0.5	0.6	0.4	0.7	0.3	95.6	0.7	3.7	0.055	0.507	18.366281	-95.774156
Cosamaloapan	60.00	3	0	8256	13.5	79.7	2.0	1.6	1.0	0.8	0.4	0.7	0.3	93.2	2.0	4.8	0.072	0.535	18.354895	-95.804779
T. C. La Tinaja - Santa Cruz	107.00	1	0	4557	20.3	67.0	1.5	4.0	1.5	2.0	0.4	2.6	0.7	87.3	1.5	11.2	0.075	0.506	18.168717	-96.088017
T. C. Cd. Alemán - Sayula	108.92	1	0	3885	15.3	62.7	3.0	9.9	2.3	1.7	1.1	3.0	1.0	78.0	3.0	19.0	0.071	0.504	18.168443	-96.096829
T. C. Cd. Alemán - Sayula	108.92	3	0	9735	16.8	64.6	3.5	6.6	1.9	1.8	0.8	3.2	0.8	81.4	3.5	15.1	0.067	0.541	18.168979	-96.103798
Lim. Edos. Term. Ver. Ppia. Oax.	115.00																			
Puente Caracol	117.20	2	0	5863	11.7	67.3	6.0	3.4	2.5	2.8	0.6	5.5	0.2	79.0	6.0	15.0	0.085	0.500	18.133084	-96.136714
Tuxtepec	121.25	1	1	5200	14.4	69.6	2.6	5.2	1.5	2.1	1.0	2.8	0.8	84.0	2.6	13.4	0.070	0.506	18.119094	-96.134997
Tuxtepec	121.25	1	2	5238	14.1	70.2	2.2	5.0	1.7	2.2	0.7	3.1	0.8	84.3	2.2	13.5	0.070	0.506	18.119108	-96.134913

3 CARR: Cd. Alemán - Sayula

CLAVE: 00301

RUTA: MEX-145

AÑO: 2025

LUGAR	ESTACION				CLASIFICACION VEHICULAR EN PORCIENTO														COORDENADAS	
	KM	TE	SC	TDPA	M	A	B	C2	C3	T3S2	T3S3	T3S2R4	OTROS	A	B	C	K'	D	LATITUD	LONGITUD
Cd. Alemán	0.00	3	0	9960	14.0	67.4	3.3	4.4	2.3	3.1	0.8	3.6	1.1	81.4	3.3	15.3	0.070	0.528	18.181783	-96.094037
Lim. Edos. Term. Ver. Ppia. Oax.	2.80																			
Puente Papaloapan	3.50	2	0	3191	18.0	65.5	3.5	4.3	4.0	2.8	0.4	1.3	0.2	83.5	3.5	13.0	0.076	0.500	18.159601	-96.096694
T. Der. Tuxtepec	9.36	3	0	4904	17.4	68.8	1.9	5.3	2.7	2.0	0.9	0.9	0.1	86.2	1.9	11.9	0.073	0.578	18.118357	-96.061712
T. Izq. Loma Bonita	30.00	1	0	5295	25.5	61.6	1.7	5.7	2.2	1.7	0.3	1.1	0.2	87.1	1.7	11.2	0.071	0.535	18.095704	-95.879351
T. Izq. Loma Bonita	30.00	3	0	4963	13.3	72.1	2.0	5.4	1.7	2.6	1.2	1.1	0.6	85.4	2.0	12.6	0.076	0.531	18.096057	-95.862832
Lim. Edos. Term. Oax. Ppia. Ver.	34.40																			
T. Der. Villa Azueta	41.50	1	0	4299	18.2	67.8	2.7	4.8	2.2	2.5	0.7	0.9	0.2	86.0	2.7	11.3	0.071	0.567	18.091231	-95.781250
T. Izq. Tesechoacán	56.70	1	0	4515	11.3	69.4	3.4	5.4	3.7	3.1	1.5	1.7	0.5	80.7	3.4	15.9	0.068	0.537	18.127736	-95.655350

OAXACA

3 CARR: Cd. Alemán - Sayula

CLAVE: 00301

RUTA: MEX-145

AÑO: 2025

LUGAR	ESTACION				CLASIFICACION VEHICULAR EN PORCIENTO										COORDENADAS					
	KM	TE	SC	TDPA	M	A	B	C2	C3	T3S2	T3S3	T3S2R4	OTROS	A	B	C	K'	D	LATITUD	LONGITUD
X. C. Santiago Tuxtla - Playa Vicente	71.40	1	0	4117	13.4	72.0	3.1	4.5	2.5	2.1	1.0	1.0	0.4	85.4	3.1	11.5	0.086	0.556	18.068336	-95.533354
X. C. Santiago Tuxtla - Playa Vicente	71.40	3	0	5095	12.4	71.4	3.3	3.6	2.7	2.9	1.2	1.7	0.8	83.8	3.3	12.9	0.074	0.504	18.066209	-95.527672
San Juan Evangelista	118.35	1	0	3594	10.1	71.7	3.4	4.0	2.7	3.8	1.5	2.2	0.6	81.8	3.4	14.8	0.070	0.546	17.918357	-95.153473
Sayula de Alemán	136.40	1	0	5681	10.6	72.9	3.2	3.6	2.3	2.9	1.2	2.5	0.8	83.5	3.2	13.3	0.071	0.506	17.887406	-94.964805

4 CARR: Coatzacoalcos - Salina Cruz

CLAVE: 00147

RUTA: MEX-185

AÑO: 2025

LUGAR	ESTACION				CLASIFICACION VEHICULAR EN PORCIENTO										COORDENADAS					
	KM	TE	SC	TDPA	M	A	B	C2	C3	T3S2	T3S3	T3S2R4	OTROS	A	B	C	K'	D	LATITUD	LONGITUD
Coatzacoalcos	0.00	3	1	10948	3.5	81.6	3.1	6.0	1.5	1.7	0.7	1.5	0.4	85.1	3.1	11.8	0.082	0.537	18.088195	-94.466355
Coatzacoalcos	0.00	3	2	11408	3.6	81.3	3.2	6.1	1.6	1.6	0.9	1.4	0.3	84.9	3.2	11.9	0.079	0.537	18.087532	-94.466067
T. C. Nuevo Teapa - Cosoleacaque	21.00	1	1	12979	6.9	78.5	4.2	6.2	1.1	1.0	0.4	1.3	0.4	85.4	4.2	10.4	0.084	0.532	18.024308	-94.537544
T. C. Nuevo Teapa - Cosoleacaque	21.00	1	2	11640	6.8	78.9	4.0	6.0	1.1	1.1	0.4	1.3	0.4	85.7	4.0	10.3	0.082	0.532	18.027041	-94.534024
Minatitlán	21.60	3	1	18318	6.0	85.2	1.3	3.8	1.9	0.6	0.2	0.8	0.2	91.2	1.3	7.5	0.066	0.514	17.998715	-94.588665
Minatitlán	21.60	3	2	17927	6.2	85.1	1.4	3.7	1.8	0.7	0.2	0.6	0.3	91.3	1.4	7.3	0.069	0.514	17.998780	-94.589075
Cosoleacaque	31.50	1	0	28476	8.6	83.2	1.0	4.8	0.7	0.8	0.3	0.5	0.1	91.8	1.0	7.2	0.062	0.520	18.007202	-94.623147
T. Der. Soteapan	34.00	1	0	17733	10.2	79.8	1.4	5.0	1.0	1.0	0.3	1.1	0.2	90.0	1.4	8.6	0.061	0.524	17.987707	-94.656574
T. Der. Soteapan	34.00	3	0	13714	11.1	77.0	2.4	4.8	1.4	1.1	0.5	1.3	0.4	88.1	2.4	9.5	0.067	0.508	17.986566	-94.659184
Jáltipan de Morelos	38.60	3	1	4688	7.8	79.2	2.5	5.6	1.1	1.3	0.9	1.2	0.4	87.0	2.5	10.5	0.073	0.520	17.962255	-94.734636
Jáltipan de Morelos	38.60	3	2	4774	7.6	78.9	2.7	5.7	1.3	1.5	0.7	1.3	0.3	86.5	2.7	10.8	0.074	0.520	17.962181	-94.734697
Acayucan	59.60	1	1	5083	7.9	80.3	2.3	5.3	1.0	1.2	0.4	1.3	0.3	88.2	2.3	9.5	0.074	0.502	17.956852	-94.835637
Acayucan	59.60	1	2	5070	7.7	80.8	2.2	5.0	1.0	1.2	0.6	1.2	0.3	88.5	2.2	9.3	0.074	0.502	17.956767	-94.835628
Acayucan	59.60	3	1	8672	8.3	80.3	3.0	2.6	1.4	1.7	0.7	1.6	0.4	88.6	3.0	8.4	0.076	0.512	17.929701	-94.923736
Acayucan	59.60	3	2	8517	8.4	80.8	2.9	2.5	1.3	1.6	0.7	1.5	0.3	89.2	2.9	7.9	0.079	0.512	17.929192	-94.923985
Sayula de Alemán	71.00	1	1	10013	7.1	78.5	3.0	2.6	1.7	3.7	1.0	1.9	0.5	85.6	3.0	11.4	0.354	0.869	17.895951	-94.950316
Sayula de Alemán	71.00	1	2	9613	7.6	77.6	3.3	2.6	1.6	3.8	1.1	1.8	0.6	85.2	3.3	11.5	0.075	0.869	17.895832	-94.950232
Sayula de Alemán	71.00	3	0	10293	7.9	66.6	4.5	3.0	3.6	6.7	2.2	4.6	0.9	74.5	4.5	21.0	0.055	0.580	17.871001	-94.969856
Aguilera	82.40	3	0	6147	7.9	67.8	4.0	3.2	1.8	6.9	2.3	5.1	1.0	75.7	4.0	20.3	0.073	0.501	17.804582	-95.025582
Campo Nuevo	94.50	3	0	7442	8.7	65.8	4.0	3.0	2.2	8.0	2.1	5.3	0.9	74.5	4.0	21.5	0.055	0.535	17.695078	-95.075143
T. Der a El Paraiso	117.20	3	0	6872	9.2	65.1	4.4	3.6	2.6	6.6	2.3	5.4	0.8	74.3	4.4	21.3	0.056	0.510	17.534561	-95.102315
Nuevo Morelos	119.00	3	0	5963	10.7	60.3	4.9	3.1	2.7	8.8	2.5	6.1	0.9	71.0	4.9	24.1	0.063	0.569	17.519102	-95.086699
T. Izq. Jesús Carranza	126.80	1	0	6355	7.3	64.7	4.3	5.4	3.9	7.5	2.9	3.1	0.9	72.0	4.3	23.7	0.058	0.533	17.437958	-95.077864
T. Izq. Jesús Carranza	126.80	3	0	5248	5.9	63.2	5.4	4.0	2.9	8.1	2.9	6.7	0.9	69.1	5.4	25.5	0.065	0.507	17.422652	-95.074478
T. C. Ramal a Suchilapan	138.21	3	0	5124	9.7	54.5	5.1	6.3	2.1	10.4	3.2	7.8	0.9	64.2	5.1	30.7	0.062	0.539	17.359423	-95.047560
Lim. Edos. Term. Ver. Ppia. Oax.	139.90																			

OAXACA

4 CARR: Coatzacoalcos - Salina Cruz

CLAVE: 00147

RUTA: MEX-185

AÑO: 2025

LUGAR	ESTACION				CLASIFICACION VEHICULAR EN PORCIENTO										COORDENADAS					
	KM	TE	SC	TDPA	M	A	B	C2	C3	T3S2	T3S3	T3S2R4	OTROS	A	B	C	K'	D	LATITUD	LONGITUD
Donaji	153.60	3	0	5768	10.2	54.9	4.8	6.2	2.4	9.5	2.7	8.4	0.9	65.1	4.8	30.1	0.063	0.519	17.216149	-95.053512
Tolosita	156.78	3	0	5509	10.3	56.4	4.7	5.4	2.6	9.4	2.6	7.6	1.0	66.7	4.7	28.6	0.064	0.520	17.192998	-95.056709
T. Der. Lib. de Palomares	165.90	3	0	5329	10.6	65.9	6.4	4.4	1.5	7.7	2.0	0.6	0.9	71.5	6.4	22.1	0.068	0.518	17.115668	-95.053065
T. Der. Tuxtepec	166.20	1	0	4717	8.9	67.3	3.0	4.3	1.7	6.9	1.7	5.4	0.8	76.2	3.0	20.8	0.080	0.556	17.147037	-95.064310
T. Der. Tuxtepec	166.20	3	0	5865	9.2	63.9	4.0	6.1	2.2	6.0	1.8	6.1	0.7	73.1	4.0	22.9	0.070	0.501	17.131839	-95.059938
T. Der. Santa Ana	171.50	1	0	6412	9.0	64.0	4.8	3.3	2.0	8.2	2.5	5.4	0.8	73.0	4.8	22.2	0.065	0.502	17.080132	-95.040431
Boca del Monte	174.50	1	0	6799	9.0	63.8	5.2	3.1	2.0	7.9	2.4	5.6	1.0	72.8	5.2	22.0	0.061	0.534	17.071652	-95.031983
Boca del Monte	174.50	3	0	7102	8.5	65.5	4.0	3.4	2.5	7.4	2.4	5.3	1.0	74.0	4.0	22.0	0.073	0.548	17.049080	-95.015134
T. Der. Estación Mogoñe	182.15	1	0	6189	7.4	64.7	5.6	3.4	2.3	7.1	2.8	5.6	1.1	72.1	5.6	22.3	0.069	0.598	17.018859	-95.008679
Piedra Blanca	183.30	1	0	7482	10.7	65.9	4.2	2.9	2.1	6.5	2.0	4.7	1.0	76.6	4.2	19.2	0.069	0.514	16.992017	-95.016048
Piedra Blanca	183.30	3	0	6608	10.5	71.1	4.7	3.3	1.5	5.9	1.7	0.4	0.9	77.1	4.7	18.2	0.075	0.512	16.981972	-95.012388
Ent. Lib. Norte de Matías Romero	193.60	1	0	6781	10.6	72.0	4.6	2.9	1.3	5.7	1.5	0.5	0.9	78.4	4.6	17.0	0.078	0.509	16.914218	-95.011524
T. Der. Matías Romero	196.00	1	0	10474	11.0	68.5	3.4	4.3	2.0	4.4	2.0	3.4	1.0	79.5	3.4	17.1	0.077	0.527	16.883608	-95.020092
Ent. Lib. Sur de Matías Romero	201.80	1	0	7114	13.5	73.8	3.2	3.3	0.8	3.6	0.7	0.4	0.7	84.4	3.2	12.4	0.092	0.525	16.855361	-95.024293
T. Der. Barrio de La Soledad	203.05	1	0	9367	8.2	68.7	3.7	4.4	2.5	5.7	1.8	4.0	1.0	76.9	3.7	19.4	0.070	0.534	16.828412	-95.028259
T. Der. Barrio de La Soledad	203.05	3	0	6192	8.1	66.6	3.1	3.6	2.8	5.1	2.9	6.9	0.9	74.7	3.1	22.2	0.062	0.500	16.806404	-95.026350
El Ajal	211.60	1	0	6664	8.5	60.5	4.9	5.2	2.6	6.7	4.2	6.3	1.1	69.0	4.9	26.1	0.074	0.623	16.774454	-95.018920
El Mezquite	222.64	1	0	5683	5.3	62.2	6.6	4.8	2.3	8.1	4.4	5.3	1.0	67.5	6.6	25.9	0.065	0.569	16.704911	-94.963898
El Mezquite	222.64	3	0	5604	4.8	67.2	6.2	5.5	1.9	8.9	4.1	0.5	0.9	67.1	6.2	26.7	0.070	0.537	16.688470	-94.953361
T. C. La Ventosa - Salina Cruz (Cuota)	236.00	1	0	6288	5.2	62.9	5.4	5.6	2.7	8.1	4.3	4.9	0.9	68.1	5.4	26.5	0.075	0.506	16.596549	-94.945191
T. C. La Ventosa - Salina Cruz (Cuota)	236.00	3	0	3309	4.6	75.7	5.4	6.0	2.3	2.5	2.2	1.2	0.1	80.3	5.4	14.3	0.073	0.500	16.576481	-94.944957
T. Izq. San Pedro Tapanatepec (2º Acceso)	241.70	1	0	3584	4.4	76.6	5.2	6.3	1.8	2.5	2.1	1.0	0.1	81.0	5.2	13.8	0.080	0.524	16.558127	-94.948374
T. Izq. San Pedro Tapanatepec (2º Acceso)	241.70	3	0	8456	4.1	86.2	2.5	3.7	1.1	1.1	0.9	0.4	0.0	90.3	2.5	7.2	0.080	0.544	16.542733	-94.953451
Juchitán de Zaragoza	255.55	1	0	10418	7.5	83.9	2.3	2.9	1.0	1.1	0.8	0.5	0.0	91.4	2.3	6.3	0.069	0.502	16.455342	-95.001434
Juchitán de Zaragoza	255.55	3	1	9959	7.9	85.4	1.6	3.4	0.9	0.4	0.3	0.1	0.0	93.3	1.6	5.1	0.083	0.580	16.437511	-95.032277
Juchitán de Zaragoza	255.55	3	2	9490	8.5	83.9	2.1	3.7	1.0	0.3	0.4	0.1	0.0	92.4	2.1	5.5	0.070	0.580	16.437388	-95.032265
Santo Domingo Tehuantepec	283.95	1	1	4753	6.4	82.7	3.0	5.8	0.8	0.6	0.4	0.1	0.2	89.1	3.0	7.9	0.075	0.554	16.347312	-95.209479
Santo Domingo Tehuantepec	283.95	1	2	4364	6.6	83.3	2.3	5.5	1.0	0.6	0.4	0.1	0.2	89.9	2.3	7.8	0.073	0.554	16.347273	-95.209466
Santo Domingo Tehuantepec	283.95	3	1	12202	6.8	86.8	1.2	3.2	0.6	0.5	0.2	0.5	0.2	93.6	1.2	5.2	0.073	0.502	16.311078	-95.236390
Santo Domingo Tehuantepec	283.95	3	2	11783	6.8	87.0	1.2	3.2	0.6	0.4	0.2	0.4	0.2	93.8	1.2	5.0	0.068	0.502	16.311044	-95.236272
Salina Cruz	302.35	1	1	11269	6.2	87.5	1.3	3.3	0.5	0.5	0.2	0.3	0.2	93.7	1.3	5.0	0.098	0.518	16.236678	-95.213211
Salina Cruz	302.35	1	2	11762	6.3	87.3	1.2	3.7	0.5	0.4	0.2	0.3	0.1	93.6	1.2	5.2	0.088	0.518	16.236694	-95.213130

OAXACA

5 CARR: Ent. La Ventosa - San Pedro Tapanatepec

CLAVE: 20059

RUTA: MEX-190

AÑO: 2025

LUGAR	ESTACION				CLASIFICACION VEHICULAR EN PORCIENTO										COORDENADAS					
	KM	TE	SC	TDPA	M	A	B	C2	C3	T3S2	T3S3	T3S2R4	OTROS	A	B	C	K'	D	LATITUD	LONGITUD
La Ventosa	0.00	3	0	3689	4.5	87.6	2.8	2.8	0.8	0.6	0.4	0.4	0.1	92.1	2.8	5.1	0.088	0.542	16.552122	-94.939458
T. C. La Ventosa - Salina Cruz (Cuola)	7.20	3	0	5689	3.0	71.6	4.0	4.9	2.2	7.0	2.9	3.4	1.0	74.6	4.0	21.4	0.073	0.525	16.571649	-94.883598
T. Der. Unión Hidalgo	14.55	3	0	5986	4.0	73.3	3.2	4.1	1.5	6.6	2.5	3.9	0.9	77.3	3.2	19.5	0.087	0.531	16.573836	-94.805611
T. Izq. Santo Domingo Ingenio	20.50	3	0	5061	5.5	66.5	4.7	3.8	2.2	8.1	4.1	4.3	0.8	72.0	4.7	23.3	0.072	0.525	16.570674	-94.766279
T. Izq. La blanca	27.90	3	0	4327	5.3	69.0	5.2	3.9	1.8	9.7	3.8	0.4	0.9	69.5	5.2	25.3	0.072	0.503	16.566946	-94.692530
Santiago Niltepec	37.10	1	0	4270	5.1	69.5	5.0	3.9	1.6	9.6	3.9	0.5	0.9	69.7	5.0	25.3	0.072	0.528	16.553864	-94.627304
T. Izq. Niltepec	38.01	3	0	4117	2.6	63.4	4.0	5.5	2.2	11.3	5.1	4.9	1.0	66.0	4.0	30.0	0.072	0.579	16.554903	-94.589153
T. Der. Reforma de Pineda	59.80	1	0	4027	3.7	63.9	4.4	6.2	2.2	8.9	4.1	5.7	0.9	67.6	4.4	28.0	0.072	0.569	16.500127	-94.448410
T. Der. Reforma de Pineda	59.80	3	0	4235	4.1	65.9	4.0	4.7	2.1	9.8	3.1	5.3	1.0	70.0	4.0	26.0	0.080	0.501	16.493062	-94.416873
Santo Domingo Zanatepec	68.25	3	0	4295	6.0	64.1	3.6	6.8	3.3	7.3	3.5	4.5	0.9	70.1	3.6	26.3	0.070	0.537	16.476202	-94.345667
T. C. Libramiento de San Pedro Tapanatepec	88.90																			
San Pedro Tapanatepec	91.80	1	0	2350	11.1	76.3	3.6	4.8	1.0	1.9	1.2	0.1	0.0	87.4	3.6	9.0	0.089	0.514	16.383376	-94.200568

6 CARR: Huajuapán de León - Oaxaca

CLAVE: 20056

RUTA: MEX-190

AÑO: 2025

LUGAR	ESTACION				CLASIFICACION VEHICULAR EN PORCIENTO										COORDENADAS					
	KM	TE	SC	TDPA	M	A	B	C2	C3	T3S2	T3S3	T3S2R4	OTROS	A	B	C	K'	D	LATITUD	LONGITUD
Huajuapán de León	0.00																			
T. Izq. Tehuacán	1.35	1	0	20748	15.2	77.9	0.8	3.5	0.5	0.7	0.4	0.7	0.3	93.1	0.8	6.1	0.063	0.534	17.813076	-97.766604
T. Izq. Tehuacán	1.35	3	0	13471	8.1	82.3	0.6	6.8	0.8	0.5	0.4	0.3	0.2	90.4	0.6	9.0	0.063	0.525	17.810568	-97.760009
Tamazulapan	38.61	1	0	4226	8.0	77.5	1.0	9.7	1.1	1.5	0.7	0.3	0.2	85.5	1.0	13.5	0.061	0.549	17.686587	-97.585585
Tamazulapan	38.61	3	0	4936	4.8	80.4	0.8	10.4	0.9	1.3	0.8	0.3	0.3	85.2	0.8	14.0	0.067	0.526	17.671575	-97.559809
T. Izq. Santiago Tejupan	49.62	3	0	3164	3.3	79.2	2.0	10.9	1.5	2.0	0.8	0.3	0.0	82.5	2.0	15.5	0.071	0.518	17.655934	-97.471802
T. Der. Tlaxiaco	61.43	3	0	3349	3.2	76.9	1.7	12.7	1.6	2.0	1.4	0.3	0.2	80.1	1.7	18.2	0.068	0.518	17.575963	-97.420815
Asunción Nochixtlán	90.40	1	0	7904	5.6	83.1	1.3	6.6	0.9	1.1	0.8	0.4	0.2	88.7	1.3	10.0	0.068	0.650	17.466804	-97.266341
T. Izq. Tehuacán	161.73	1	0	1213	10.7	85.7	0.3	2.7	0.5	0.1	0.0	0.0	0.0	96.4	0.3	3.3	0.121	0.707	17.285037	-96.913108
T. Izq. Tehuacán	161.73	3	0	9301	12.4	84.5	0.5	1.0	0.4	0.6	0.2	0.3	0.1	96.9	0.5	2.6	0.070	0.530	17.284929	-96.900206
T. Der. Tlaltinango	170.29	1	0	7458	12.1	84.2	0.3	1.5	0.6	0.8	0.1	0.3	0.1	96.3	0.3	3.4	0.090	0.585	17.247900	-96.851594
T. Der. Tlaltinango	170.29	3	0	10993	9.7	85.9	0.7	2.1	0.6	0.6	0.2	0.1	0.1	95.6	0.7	3.7	0.068	0.617	17.241753	-96.833536
T. Der. Nazareno Etla	179.23	3	1	16424	10.5	85.3	0.5	2.1	0.7	0.2	0.2	0.4	0.1	95.8	0.5	3.7	0.075	0.537	17.166754	-96.787732
T. Der. Nazareno Etla	179.23	3	2	16641	10.7	85.4	0.4	2.0	0.5	0.3	0.1	0.5	0.1	96.1	0.4	3.5	0.071	0.537	17.166796	-96.787621
T. Aut. Cuacnopalan - Oaxaca	181.80	3	1	26510	11.2	80.4	1.8	3.0	1.2	0.8	0.5	0.9	0.2	91.6	1.8	6.6	0.072	0.551	17.139925	-96.776604
T. Aut. Cuacnopalan - Oaxaca	181.80	3	2	27531	10.9	80.9	1.9	2.8	1.0	1.0	0.4	0.8	0.3	91.8	1.9	6.3	0.071	0.551	17.139913	-96.776469
Oaxaca	190.60	1	1	34328	12.7	81.0	1.0	3.5	0.4	0.3	0.2	0.7	0.2	93.7	1.0	5.3	0.073	0.503	17.099728	-96.751085
Oaxaca	190.60	1	2	33088	12.8	80.9	1.2	3.1	0.4	0.5	0.3	0.5	0.3	93.7	1.2	5.1	0.071	0.503	17.099811	-96.750999

OAXACA

7 CARR: Juchitán - Ixtepec

CLAVE: 20359

RUTA: MEX-185

AÑO: 2025

LUGAR	ESTACION				CLASIFICACION VEHICULAR EN PORCIENTO										COORDENADAS					
	KM	TE	SC	TDPA	M	A	B	C2	C3	T3S2	T3S3	T3S2R4	OTROS	A	B	C	K'	D	LATITUD	LONGITUD
Juchitán de Zaragoza	0.00																			
X. C. Coatzacoalcos - Salina Cruz	0.15	3	1	7984	12.0	82.3	1.1	2.9	0.9	0.4	0.1	0.2	0.1	94.3	1.1	4.6	0.078	0.517	16.454662	-95.027810
X. C. Coatzacoalcos - Salina Cruz	0.15	3	2	8311	11.9	82.5	1.1	3.0	0.8	0.4	0.1	0.1	0.1	94.4	1.1	4.5	0.073	0.517	16.454074	-95.027725
Asunción Ixtaltepec	7.40	1	1	4700	12.4	79.3	2.0	4.6	1.0	0.3	0.3	0.1	0.0	91.7	2.0	6.3	0.086	0.511	16.503774	-95.053439
Asunción Ixtaltepec	7.40	1	2	4623	12.6	79.2	2.1	4.4	1.0	0.3	0.3	0.1	0.0	91.8	2.1	6.1	0.084	0.511	16.501465	-95.054947
Asunción Ixtaltepec	7.40	3	1	3664	13.1	80.2	0.7	4.0	0.8	0.5	0.5	0.1	0.1	93.3	0.7	6.0	0.087	0.519	16.510872	-95.066098
Asunción Ixtaltepec	7.40	3	2	3554	12.9	80.0	0.9	4.2	0.7	0.6	0.5	0.1	0.1	92.9	0.9	6.2	0.091	0.519	16.510830	-95.066170
Ixtepec	16.00	1	1	3855	15.3	79.4	1.7	2.5	0.7	0.2	0.1	0.1	0.0	94.7	1.7	3.6	0.092	0.531	16.534615	-95.078721
Ixtepec	16.00	1	2	3829	14.5	79.9	1.7	2.9	0.5	0.3	0.1	0.1	0.0	94.4	1.7	3.9	0.087	0.531	16.534571	-95.078807

8 CARR: La Granja - Temascal

CLAVE: 00275

RUTA: MEX-145

AÑO: 2025

LUGAR	ESTACION				CLASIFICACION VEHICULAR EN PORCIENTO										COORDENADAS					
	KM	TE	SC	TDPA	M	A	B	C2	C3	T3S2	T3S3	T3S2R4	OTROS	A	B	C	K'	D	LATITUD	LONGITUD
T. C. La Tinaja - Santa Cruz	0.00	3	0	4116	37.4	57.8	0.6	2.5	0.8	0.2	0.3	0.3	0.1	95.2	0.6	4.2	0.075	0.545	18.353276	-96.261316
Lim. Edos. Term. Ver. Ppia. Oax.	5.00																			
Temascal	23.00	1	0	5589	24.9	61.9	1.5	5.7	1.4	2.5	0.6	1.2	0.3	86.8	1.5	11.7	0.074	0.596	18.257289	-96.392488

9 CARR: Las Cruces - Pinotepa Nacional

CLAVE: 00073

RUTA: MEX-200

AÑO: 2025

LUGAR	ESTACION				CLASIFICACION VEHICULAR EN PORCIENTO										COORDENADAS					
	KM	TE	SC	TDPA	M	A	B	C2	C3	T3S2	T3S3	T3S2R4	OTROS	A	B	C	K'	D	LATITUD	LONGITUD
T. C. Chilpancingo - Acapulco	0.00	3	1	19470	8.3	84.1	0.7	2.2	1.7	1.5	0.4	0.6	0.5	92.4	0.7	6.9	0.078	0.512	16.885700	-99.833913
T. C. Chilpancingo - Acapulco	0.00	3	2	18555	8.0	83.7	0.9	2.4	1.5	1.7	0.5	0.8	0.5	91.7	0.9	7.4	0.071	0.512	16.885788	-99.833703
T. Der. Puerto Marqués	4.62	1	1	23472	8.3	84.5	1.2	2.5	1.5	0.8	0.4	0.6	0.2	92.8	1.2	6.0	0.079	0.513	16.867303	-99.810976
T. Der. Puerto Marqués	4.62	1	2	22242	8.5	85.1	0.8	2.3	1.3	0.9	0.4	0.5	0.2	93.6	0.8	5.6	0.071	0.513	16.867495	-99.810888
T. Der. Puerto Marqués	4.62	3	0	12834	6.7	84.8	0.6	2.5	2.8	1.0	0.6	0.5	0.5	91.5	0.6	7.9	0.084	0.519	16.851997	-99.794136
X. C. Puerto Marqués - La Venta (Cuota)	11.70	1	1	4858	6.8	83.7	1.1	3.4	1.6	1.4	1.0	0.7	0.3	90.5	1.1	8.4	0.084	0.515	16.831144	-99.770687
X. C. Puerto Marqués - La Venta (Cuota)	11.70	1	2	4578	7.0	84.0	1.3	3.6	1.4	1.2	0.8	0.5	0.2	91.0	1.3	7.7	0.081	0.515	16.831237	-99.770680
X. C. Puerto Marqués - La Venta (Cuota)	11.70	3	1	5553	8.7	83.7	1.2	2.5	1.7	1.1	0.9	0.2	0.0	92.4	1.2	6.4	0.089	0.502	16.830086	-99.749961
X. C. Puerto Marqués - La Venta (Cuota)	11.70	3	2	5509	8.6	83.2	1.3	2.6	1.7	1.0	1.3	0.3	0.0	91.8	1.3	6.9	0.097	0.502	16.830171	-99.750013
T. Der El Arenal	17.00	1	1	4830	5.3	86.5	1.4	2.3	1.7	1.4	0.9	0.2	0.3	91.8	1.4	6.8	0.096	0.519	16.824326	-99.715697
T. Der El Arenal	17.00	1	2	4476	5.3	86.7	1.6	2.1	1.8	1.3	1.0	0.2	0.0	92.0	1.6	6.4	0.091	0.519	16.824411	-99.715706
Sn Pedro Cacahuatpec	21.60	1	0	7603	8.5	82.6	1.9	2.1	1.9	1.7	1.0	0.2	0.1	91.1	1.9	7.0	0.081	0.520	16.815815	-99.672394
T. Der. a Barra Vieja	35.00	1	0	4429	5.3	85.1	2.0	2.1	1.6	2.2	1.6	0.1	0.0	90.4	2.0	7.6	0.077	0.532	16.756194	-99.580244

OAXACA

9 CARR: Las Cruces - Pinotepa Nacional

CLAVE: 00073

RUTA: MEX-200

AÑO: 2025

LUGAR	ESTACION				CLASIFICACION VEHICULAR EN PORCIENTO										COORDENADAS					
	KM	TE	SC	TDPA	M	A	B	C2	C3	T3S2	T3S3	T3S2R4	OTROS	A	B	C	K'	D	LATITUD	LONGITUD
San Marcos	58.90	1	0	6544	5.5	85.0	2.4	2.3	1.5	1.8	1.1	0.3	0.1	90.5	2.4	7.1	0.079	0.514	16.779844	-99.410219
San Marcos	58.90	3	0	5534	6.6	82.7	3.2	2.0	1.9	2.0	1.3	0.2	0.1	89.3	3.2	7.5	0.082	0.505	16.792581	-99.368993
Nexpa	84.96	3	0	4807	5.6	83.1	2.1	3.1	2.1	2.2	1.4	0.2	0.2	88.7	2.1	9.2	0.082	0.509	16.779813	-99.199564
Cruz Grande	97.00	3	0	7423	4.0	87.6	1.7	2.5	1.6	1.4	0.9	0.3	0.0	91.6	1.7	6.7	0.081	0.516	16.712929	-99.116928
T. Izq. Copala (1º Acceso)	117.50	1	0	6341	4.9	86.1	1.8	2.8	1.8	1.5	0.8	0.2	0.1	91.0	1.8	7.2	0.062	0.514	16.607025	-98.985320
T. Izq. Copala (1º Acceso)	117.50	3	0	6952	3.5	83.4	1.7	6.5	1.8	1.8	1.1	0.2	0.0	86.9	1.7	11.4	0.062	0.517	16.601062	-98.956173
T. Der. Playa Ventura	124.00	1	0	4767	3.0	84.6	3.4	2.4	2.4	2.5	1.5	0.2	0.0	87.6	3.4	9.0	0.085	0.503	16.594353	-98.927733
T. Der. Playa Ventura	124.00	3	0	4484	2.8	85.3	3.5	2.5	2.2	2.4	1.2	0.1	0.0	88.1	3.5	8.4	0.086	0.507	16.592316	-98.919279
Marquelia	136.80	1	0	6420	9.0	81.3	2.6	2.3	1.8	1.7	0.9	0.4	0.0	90.3	2.6	7.1	0.081	0.510	16.581869	-98.830724
Marquelia	136.80	3	0	6015	5.3	84.8	2.7	2.4	1.7	1.8	1.0	0.2	0.1	90.1	2.7	7.2	0.086	0.507	16.581840	-98.800772
Juchitán	158.00	3	0	3792	4.2	84.8	3.3	2.3	2.2	2.0	1.1	0.1	0.0	89.0	3.3	7.7	0.082	0.505	16.633578	-98.622839
T. Izq. Ometepec	175.88	1	0	4382	6.9	81.4	2.3	3.5	2.4	2.1	1.1	0.3	0.0	88.3	2.3	9.4	0.089	0.504	16.654655	-98.504309
T. Izq. Ometepec	175.88	3	0	4397	6.6	81.4	2.4	5.1	2.1	1.2	1.0	0.2	0.0	88.0	2.4	9.6	0.077	0.504	16.650541	-98.496768
Cuajinicuilapa	200.60	1	0	5128	4.4	85.3	2.4	2.9	1.8	1.9	1.1	0.2	0.0	89.7	2.4	7.9	0.077	0.505	16.477352	-98.435653
Cuajinicuilapa	200.60	3	0	3296	4.6	84.1	2.5	3.2	2.3	1.9	1.3	0.1	0.0	88.7	2.5	8.8	0.084	0.511	16.465795	-98.401124
Lim. Edos. Term. Gro. Ppia. Oax.	207.80																			
T. Izq. San Pedro Orizaba	215.00	3	0	2176	6.6	78.7	3.9	3.1	2.2	3.4	2.0	0.1	0.0	85.3	3.9	10.8	0.071	0.513	16.443173	-98.343737
T. Izq. Tlaxiaco	245.47	1	0	3439	14.3	71.3	2.2	5.1	2.0	3.0	1.5	0.4	0.2	85.6	2.2	12.2	0.113	0.635	16.379235	-98.094036
T. Izq. Tlaxiaco	245.47	3	0	7072	6.0	85.6	1.6	3.0	1.1	1.7	0.7	0.2	0.1	91.6	1.6	6.8	0.091	0.550	16.376597	-98.092033
Pinotepa Nacional	252.50																			

10 CARR: Libramiento de Ejutla

CLAVE:

RUTA: MEX-175

AÑO: 2025

LUGAR	ESTACION				CLASIFICACION VEHICULAR EN PORCIENTO										COORDENADAS					
	KM	TE	SC	TDPA	M	A	B	C2	C3	T3S2	T3S3	T3S2R4	OTROS	A	B	C	K'	D	LATITUD	LONGITUD
T. C. Oaxaca - Puerto Ángel Norte	0.00	3	0	5889	4.0	82.5	1.4	8.8	1.7	0.9	0.5	0.1	0.1	86.5	1.4	12.1	0.096	0.547	16.594616	-96.734657
X. C. Ejutla - Coatecas	5.70	3	0	6116	4.2	79.5	2.2	9.7	2.2	1.2	0.6	0.3	0.1	83.7	2.2	14.1	0.091	0.590	16.551659	-96.715921
T. C. Oaxaca - Puerto Ángel Sur	10.00																			

11 CARR: Libramiento de Ocotlán Oax.

CLAVE:

RUTA: MEX-175

AÑO: 2025

LUGAR	ESTACION				CLASIFICACION VEHICULAR EN PORCIENTO										COORDENADAS					
	KM	TE	SC	TDPA	M	A	B	C2	C3	T3S2	T3S3	T3S2R4	OTROS	A	B	C	K'	D	LATITUD	LONGITUD
T. C. Oaxaca - Puerto Ángel Norte	0.00	3	0	9283	3.3	82.2	1.3	9.0	1.3	2.0	0.6	0.1	0.2	85.5	1.3	13.2	0.074	0.593	16.858433	-96.677741
X. C. Ocotlán - Santa Catarina Minas	9.60	3	0	8641	4.2	79.4	1.6	9.6	1.8	2.2	0.8	0.1	0.3	83.6	1.6	14.8	0.076	0.588	16.784250	-96.647010

OAXACA

11 CARR: Libramiento de Ocotlán Oax.

CLAVE:

RUTA: MEX-175

AÑO: 2025

LUGAR	ESTACION				CLASIFICACION VEHICULAR EN PORCIENTO													COORDENADAS		
	KM	TE	SC	TDPA	M	A	B	C2	C3	T3S2	T3S3	T3S2R4	OTROS	A	B	C	K'	D	LATITUD	LONGITUD
T. C. Oaxaca - Puerto Ángel Norte	15.60																			

12 CARR: Libramiento de Palomares

CLAVE:

RUTA: MEX-185

AÑO: 2025

LUGAR	ESTACION				CLASIFICACION VEHICULAR EN PORCIENTO													COORDENADAS		
	KM	TE	SC	TDPA	M	A	B	C2	C3	T3S2	T3S3	T3S2R4	OTROS	A	B	C	K'	D	LATITUD	LONGITUD
T.C. Coatzacoalcos - Salina Cruz Norte	161.30																			
T.C. Coatzacoalcos - Salina Cruz Sur	167.00	1	0	5838	8.5	62.7	9.1	4.3	2.3	7.2	3.1	1.9	0.9	64.4	9.1	26.5	0.077	0.544	17.124227	-95.061075

13 CARR: Libramiento de Pochutla

CLAVE:

RUTA: MEX-200

AÑO: 2025

LUGAR	ESTACION				CLASIFICACION VEHICULAR EN PORCIENTO													COORDENADAS		
	KM	TE	SC	TDPA	M	A	B	C2	C3	T3S2	T3S3	T3S2R4	OTROS	A	B	C	K'	D	LATITUD	LONGITUD
T. C. Santiago Pinotepa Nacional - Salina Cruz	0.00	3	0	2695	24.1	62.5	1.2	9.1	1.2	1.1	0.2	0.4	0.2	86.6	1.2	12.2	0.089	0.573	15.735295	-96.480857
Pio Macaya	2.40	1	0	2629	26.3	61.7	1.4	6.9	1.7	1.4	0.4	0.2	0.0	88.0	1.4	10.6	0.075	0.513	15.749523	-96.477411
Pio Macaya	2.40	3	0	2113	22.8	64.9	1.1	6.5	1.8	1.4	0.7	0.5	0.3	87.7	1.1	11.2	0.087	0.519	15.757325	-96.473665
T. C. Oaxaca - Puerto Ángel	5.20	1	0	1883	24.4	65.7	0.4	6.6	1.5	0.9	0.4	0.1	0.0	90.1	0.4	9.5	0.087	0.564	15.762411	-96.466103

14 CARR: Libramiento de San Pedro Tapanatepec

CLAVE:

RUTA: MEX-200

AÑO: 2025

LUGAR	ESTACION				CLASIFICACION VEHICULAR EN PORCIENTO													COORDENADAS		
	KM	TE	SC	TDPA	M	A	B	C2	C3	T3S2	T3S3	T3S2R4	OTROS	A	B	C	K'	D	LATITUD	LONGITUD
T. C. Ent. La Ventosa - San Pedro Tapanatepec	0.00																			
T. C. Tapanatepec - Tuxtla Gutiérrez	3.35	1	0	2982	5.9	56.3	4.3	4.9	6.4	10.8	3.5	7.0	0.9	62.2	4.3	33.5	0.075	0.551	16.375043	-94.182074
X. C. Tapanatepec - Talismán Este	5.80	1	0	4826	12.9	60.7	3.7	2.8	3.9	8.2	2.6	4.3	0.9	73.6	3.7	22.7	0.085	0.523	16.355586	-94.188860

15 CARR: Libramiento de Santa María del Tule

CLAVE:

RUTA: MEX-190

AÑO: 2025

LUGAR	ESTACION				CLASIFICACION VEHICULAR EN PORCIENTO													COORDENADAS		
	KM	TE	SC	TDPA	M	A	B	C2	C3	T3S2	T3S3	T3S2R4	OTROS	A	B	C	K'	D	LATITUD	LONGITUD
T. C. Oaxaca - Tehuantepec (Poniente)	0.00	3	0	23526	5.5	87.4	1.0	3.3	1.2	0.7	0.3	0.5	0.1	92.9	1.0	6.1	0.067	0.523	17.050699	-96.656576
T. C. Oaxaca - Tehuantepec (Oriente)	5.80	1	0	23014	5.5	87.3	0.9	3.5	1.0	0.9	0.3	0.4	0.2	92.8	0.9	6.3	0.064	0.582	17.036748	-96.624902

OAXACA

16 CARR: Oaxaca - Puerto Ángel

CLAVE: 20091

RUTA: MEX-175

AÑO: 2025

LUGAR	ESTACION				CLASIFICACION VEHICULAR EN PORCIENTO										COORDENADAS					
	KM	TE	SC	TDPA	M	A	B	C2	C3	T3S2	T3S3	T3S2R4	OTROS	A	B	C	K'	D	LATITUD	LONGITUD
Oaxaca	0.00	3	1	29440	8.2	86.8	0.7	2.5	0.4	0.3	0.2	0.6	0.3	95.0	0.7	4.3	0.063	0.534	17.032259	-96.713057
Oaxaca	0.00	3	2	31754	8.4	86.4	0.5	2.6	0.4	0.5	0.2	0.8	0.2	94.8	0.5	4.7	0.065	0.534	17.032239	-96.712868
T. Der. Aeropuerto	10.46	1	1	28483	9.5	85.5	0.5	2.9	0.5	0.5	0.1	0.3	0.2	95.0	0.5	4.5	0.069	0.521	17.008027	-96.712903
T. Der. Aeropuerto	10.46	1	2	28656	9.8	84.5	0.7	3.3	0.6	0.3	0.1	0.4	0.3	94.3	0.7	5.0	0.073	0.521	17.007828	-96.712797
T. Der. Puerto Escondido	19.07	1	1	16684	5.7	87.7	1.2	4.0	0.5	0.3	0.2	0.2	0.2	93.4	1.2	5.4	0.091	0.561	16.933808	-96.704381
T. Der. Puerto Escondido	19.07	1	2	16150	5.7	87.5	1.0	4.2	0.6	0.3	0.3	0.2	0.2	93.2	1.0	5.8	0.098	0.561	16.933451	-96.704191
T. Der. Puerto Escondido	19.07	3	0	22817	7.3	84.6	1.0	4.1	1.0	1.0	0.3	0.5	0.2	91.9	1.0	7.1	0.059	0.548	16.926839	-96.702249
T. C. Libramiento de Ocotlán Oax. Norte	22.80	3	0	7749	7.8	82.5	0.5	4.5	0.6	3.2	0.3	0.2	0.4	90.3	0.5	9.2	0.081	0.677	16.852425	-96.682032
T. C. Libramiento de Ocotlán Oax. Sur	35.30	3	0	14208	8.6	82.9	1.1	5.2	1.0	0.6	0.3	0.2	0.1	91.5	1.1	7.4	0.078	0.549	16.751282	-96.682449
Ocotlán	35.67	3	0	8729	8.4	86.1	0.5	2.5	1.0	0.6	0.4	0.3	0.2	94.5	0.5	5.0	0.095	0.580	16.765382	-96.677064
T. C. Libramiento de Ejutla Norte	55.50	1	0	10041	4.6	84.4	1.1	7.2	1.2	0.8	0.4	0.2	0.1	89.0	1.1	9.9	0.067	0.587	16.609885	-96.737820
T. C. Libramiento de Ejutla Norte	55.50	3	0	3840	11.1	80.9	0.5	5.7	0.5	1.1	0.2	0.0	0.0	92.0	0.5	7.5	0.078	0.505	16.589216	-96.739324
T. C. Libramiento de Ejutla Sur	64.70	1	0	3170	12.5	81.0	0.4	4.1	0.7	0.9	0.2	0.1	0.1	93.5	0.4	6.1	0.079	0.568	16.528541	-96.736001
T. C. Libramiento de Ejutla Sur	64.70	3	0	6981	5.0	80.1	1.6	8.9	1.6	2.0	0.5	0.2	0.1	85.1	1.6	13.3	0.095	0.666	16.516287	-96.736470
T. Der. A San Vicente Coatlán	69.50	3	0	4655	5.7	80.2	0.9	10.4	1.3	0.8	0.5	0.1	0.1	85.9	0.9	13.2	0.061	0.560	16.478673	-96.736519
Miahuatlán	100.64	1	0	6693	8.6	80.7	1.1	5.9	1.4	1.1	0.5	0.6	0.1	89.3	1.1	9.6	0.076	0.501	16.353882	-96.611718
Miahuatlán	100.64	3	0	4588	12.9	77.2	0.8	5.4	1.1	2.0	0.3	0.1	0.2	90.1	0.8	9.1	0.073	0.536	16.285364	-96.583999
San Miguel Suchixtepec	144.00	1	0	2326	5.5	88.7	0.2	3.6	1.3	0.3	0.1	0.2	0.1	94.2	0.2	5.6	0.067	0.510	16.103403	-96.471805
Candelaria Loxicha	205.00	1	0	2038	19.4	74.5	0.6	3.5	1.3	0.3	0.1	0.2	0.1	93.9	0.6	5.5	0.064	0.511	15.931102	-96.480767
Candelaria Loxicha	205.00	3	0	1809	14.5	76.7	0.4	5.6	1.3	0.9	0.3	0.2	0.1	91.2	0.4	8.4	0.066	0.504	15.924441	-96.490442
San José Chacalapa	224.00	3	0	3981	23.6	71.6	0.3	3.3	0.3	0.3	0.3	0.2	0.1	95.2	0.3	4.5	0.063	0.586	15.820040	-96.463806
T. Izq. Santa María Huatulco	233.80	1	0	6439	19.1	71.6	0.2	2.9	0.9	2.5	1.5	0.9	0.4	90.7	0.2	9.1	0.077	0.515	15.760238	-96.464947
T. Der. De San Pedro Pochutla	236.00	1	0	6110	22.7	69.7	0.3	3.1	0.7	2.2	0.6	0.6	0.1	92.4	0.3	7.3	0.079	0.613	15.764503	-96.463672
X. C. Santiago Pinotepa Nacional - Salina Cruz	237.70	1	1	7484	29.8	64.5	0.7	2.0	1.1	0.6	0.4	0.6	0.3	94.3	0.7	5.0	0.072	0.510	15.732284	-96.474322
X. C. Santiago Pinotepa Nacional - Salina Cruz	237.70	1	2	7027	29.4	64.9	0.8	2.3	0.8	0.6	0.3	0.6	0.3	94.3	0.8	4.9	0.075	0.510	15.732231	-96.474271
X. C. Santiago Pinotepa Nacional - Salina Cruz	237.70	3	0	7177	30.0	62.5	0.5	2.3	0.6	2.7	0.4	0.7	0.3	92.5	0.5	7.0	0.076	0.533	15.729046	-96.474592
Puerto Ángel	245.40	1	0	4969	22.2	73.5	0.3	2.4	0.3	0.2	0.3	0.6	0.2	95.7	0.3	4.0	0.085	0.608	15.676125	-96.481952

17 CARR: Oaxaca - Tehuantepec

CLAVE: 20057

RUTA: MEX-190

AÑO: 2025

LUGAR	ESTACION				CLASIFICACION VEHICULAR EN PORCIENTO										COORDENADAS					
	KM	TE	SC	TDPA	M	A	B	C2	C3	T3S2	T3S3	T3S2R4	OTROS	A	B	C	K'	D	LATITUD	LONGITUD
Oaxaca	0.00	3	1	24791	9.2	87.0	0.8	2.6	0.2	0.1	0.0	0.1	0.0	96.2	0.8	3.0	0.065	0.506	17.066822	-96.684658
Oaxaca	0.00	3	2	25049	9.4	86.8	0.5	2.5	0.4	0.2	0.0	0.2	0.0	96.2	0.5	3.3	0.067	0.506	17.066976	-96.684618
T. Izq. Guelatao	8.69	3	1	18399	8.9	85.5	0.8	3.3	0.5	0.4	0.3	0.2	0.1	94.4	0.8	4.8	0.080	0.509	17.063986	-96.675112

OAXACA

17 CARR: Oaxaca - Tehuantepec

CLAVE: 20057

RUTA: MEX-190

AÑO: 2025

LUGAR	ESTACION				CLASIFICACION VEHICULAR EN PORCIENTO										COORDENADAS					
	KM	TE	SC	TDPA	M	A	B	C2	C3	T3S2	T3S3	T3S2R4	OTROS	A	B	C	K'	D	LATITUD	LONGITUD
T. Izq. Guelatao	8.69	3	2	19068	9.1	85.7	0.8	2.8	0.6	0.4	0.3	0.1	0.2	94.8	0.8	4.4	0.086	0.509	17.064143	-96.675118
Libramiento Santa María el Tule	12.00	1	1	18757	8.8	86.7	0.7	2.5	0.6	0.1	0.1	0.3	0.2	95.5	0.7	3.8	0.069	0.519	17.062056	-96.668629
Libramiento Santa María el Tule	12.00	1	2	19244	9.0	86.6	0.5	2.5	0.5	0.2	0.1	0.2	0.4	95.6	0.5	3.9	0.071	0.519	17.062325	-96.668964
Santa María El Tule	13.90	1	1	7347	11.8	84.8	0.4	1.9	0.3	0.3	0.3	0.2	0.0	96.6	0.4	3.0	0.099	0.561	17.049027	-96.642319
Santa María El Tule	13.90	1	2	7666	11.6	84.7	0.7	2.0	0.2	0.3	0.3	0.2	0.0	96.3	0.7	3.0	0.092	0.561	17.049141	-96.642255
Santa María El Tule	13.90	3	0	5533	14.2	82.8	0.4	2.0	0.3	0.2	0.0	0.1	0.0	97.0	0.4	2.6	0.087	0.504	17.042926	-96.628351
T. Izq. Teotitlán del Valle	26.50	1	0	18082	5.5	88.3	1.0	3.4	0.6	0.5	0.2	0.4	0.1	93.8	1.0	5.2	0.071	0.545	16.997123	-96.529099
T. Izq. Teotitlán del Valle	26.50	3	0	17416	5.4	87.2	1.4	4.1	0.7	0.6	0.3	0.3	0.0	92.6	1.4	6.0	0.074	0.500	16.992263	-96.521701
T. Der. Tlacolula	33.64	1	0	18903	6.4	84.9	1.5	4.6	1.0	0.7	0.5	0.3	0.1	91.3	1.5	7.2	0.073	0.531	16.970406	-96.488999
T. Der. Tlacolula	33.64	3	1	6319	4.4	86.6	1.4	4.7	1.1	0.8	0.5	0.4	0.1	91.0	1.4	7.6	0.076	0.533	16.946954	-96.457490
T. Der. Tlacolula	33.64	3	2	5971	4.4	86.7	1.6	4.6	0.9	0.8	0.6	0.4	0.0	91.1	1.6	7.3	0.081	0.533	16.947032	-96.457451
T. Izq. Villa de Mitla	42.66	1	0	10690	4.4	79.8	2.9	5.1	1.0	1.6	4.5	0.4	0.3	84.2	2.9	12.9	0.080	0.554	16.921381	-96.406218
T. Izq. Villa de Mitla	42.66	3	0	5654	4.1	83.9	2.3	4.5	1.7	1.5	1.1	0.7	0.2	88.0	2.3	9.7	0.086	0.512	16.912381	-96.397737
San Pedro Totolapan	81.00	1	0	3735	6.2	77.9	3.4	4.9	2.1	2.5	1.1	1.4	0.5	84.1	3.4	12.5	0.067	0.528	16.672770	-96.307296
T. Izq. Nejapa de Madero	127.00	1	0	2858	4.4	78.6	4.1	6.3	1.4	3.0	1.2	0.8	0.2	83.0	4.1	12.9	0.085	0.519	16.621668	-96.037894
La Reforma	184.62	1	0	2255	3.6	78.4	4.7	5.5	1.4	3.3	1.6	1.2	0.3	82.0	4.7	13.3	0.090	0.547	16.399479	-95.767512
La Reforma	184.62	3	0	2397	3.9	78.7	4.8	5.2	1.3	3.1	1.2	1.4	0.4	82.6	4.8	12.6	0.087	0.526	16.398462	-95.760891
T. Der. Magdalena Tequisistlán	206.66	1	0	3719	7.6	77.9	3.4	3.8	1.4	2.3	1.8	1.2	0.6	85.5	3.4	11.1	0.087	0.515	16.415062	-95.597531
T. Izq. Jalapa de Márquez	224.60	3	0	3510	3.1	79.9	3.8	6.7	1.3	2.6	1.5	0.7	0.4	83.0	3.8	13.2	0.087	0.537	16.422057	-95.423480
X. C. La Ventosa - Salina Cruz (Cuota)	246.18	1	0	3716	4.1	81.6	3.0	5.8	1.5	1.6	1.1	1.2	0.1	85.7	3.0	11.3	0.085	0.503	16.333929	-95.283032
X. C. La Ventosa - Salina Cruz (Cuota)	246.18	3	0	5442	5.7	79.7	2.1	5.1	1.4	2.1	0.9	2.3	0.7	85.4	2.1	12.5	0.083	0.504	16.331262	-95.272053
Tehuantepec	250.60	1	0	9302	6.4	81.7	1.9	4.7	1.1	1.5	0.9	1.6	0.2	88.1	1.9	10.0	0.066	0.506	16.327342	-95.255956

18 CARR: Puebla - Huajuapán de León

CLAVE: 00049

RUTA: MEX-190

AÑO: 2025

LUGAR	ESTACION				CLASIFICACION VEHICULAR EN PORCIENTO										COORDENADAS					
	KM	TE	SC	TDPA	M	A	B	C2	C3	T3S2	T3S3	T3S2R4	OTROS	A	B	C	K'	D	LATITUD	LONGITUD
Puebla	0.00	3	1	30102	5.0	86.2	2.7	3.4	1.5	0.5	0.2	0.3	0.2	91.2	2.7	6.1	0.067	0.534	19.034229	-98.260707
Puebla	0.00	3	2	31522	5.2	86.3	2.4	3.5	1.3	0.6	0.2	0.3	0.2	91.5	2.4	6.1	0.070	0.534	19.034115	-98.260584
T. Izq. Santa María Acuyah	8.68	1	1	18829	4.1	86.9	1.5	3.7	1.3	1.1	0.5	0.7	0.2	91.0	1.5	7.5	0.080	0.520	19.025215	-98.291292
T. Izq. Santa María Acuyah	8.68	1	2	20132	4.3	87.3	1.3	4.0	1.1	0.9	0.3	0.6	0.2	91.6	1.3	7.1	0.078	0.520	19.025169	-98.291131
T. Izq. Santa María Acuyah	8.68	3	1	18724	4.6	86.7	1.5	3.0	1.7	1.3	0.4	0.6	0.2	91.3	1.5	7.2	0.077	0.512	19.023236	-98.302336
T. Izq. Santa María Acuyah	8.68	3	2	18617	4.5	87.2	1.4	3.3	1.6	1.1	0.3	0.4	0.2	91.7	1.4	6.9	0.078	0.512	19.023155	-98.302350
Chipilo	13.00	1	1	16760	7.2	83.9	1.5	3.2	2.1	1.2	0.3	0.4	0.2	91.1	1.5	7.4	0.078	0.500	19.012009	-98.321122
Chipilo	13.00	1	2	16665	7.0	84.4	1.4	3.0	2.2	1.0	0.2	0.6	0.2	91.4	1.4	7.2	0.084	0.500	19.011962	-98.321042

OAXACA

18 CARR: Puebla - Huajuapán de León

CLAVE: 00049

RUTA: MEX-190

AÑO: 2025

LUGAR	ESTACION				CLASIFICACION VEHICULAR EN PORCIENTO										COORDENADAS					
	KM	TE	SC	TDPA	M	A	B	C2	C3	T3S2	T3S3	T3S2R4	OTROS	A	B	C	K'	D	LATITUD	LONGITUD
T. Der. Santa Isabel Cholula	17.28	1	0	19668	9.6	84.3	0.7	2.1	1.5	0.7	0.4	0.4	0.3	93.9	0.7	5.4	0.081	0.516	18.986437	-98.361806
T. Der. Santa Isabel Cholula	17.28	3	0	17201	8.1	85.0	0.9	2.6	1.3	0.9	0.5	0.5	0.2	93.1	0.9	6.0	0.076	0.524	18.966925	-98.383383
Atlixco	29.88	1	0	23349	8.3	86.3	0.6	2.4	0.9	0.6	0.3	0.3	0.3	94.6	0.6	4.8	0.073	0.527	18.930491	-98.407265
Atlixco	29.88	3	1	9469	6.8	83.3	1.5	3.3	1.8	1.6	0.7	0.8	0.2	90.1	1.5	8.4	0.089	0.604	18.867117	-98.440129
Atlixco	29.88	3	2	9255	6.6	83.4	1.6	3.5	1.4	1.5	1.0	0.7	0.3	90.0	1.6	8.4	0.077	0.604	18.867164	-98.440031
Tepeojuma	51.90	1	1	7350	6.9	82.1	1.8	3.8	1.8	1.6	0.6	1.1	0.3	89.0	1.8	9.2	0.082	0.556	18.735612	-98.448780
Tepeojuma	51.90	1	2	7249	7.1	82.4	2.0	3.8	1.6	1.4	0.8	0.7	0.2	89.5	2.0	8.5	0.081	0.556	18.735472	-98.448705
Izúcar de Matamoros	67.00	1	0	9564	17.7	74.7	0.8	2.6	1.8	0.9	0.7	0.5	0.3	92.4	0.8	6.8	0.071	0.558	18.634649	-98.468891
T. Der. Cuautla	70.00	3	0	12462	22.7	68.6	1.7	2.3	1.6	1.2	0.8	0.7	0.4	91.3	1.7	7.0	0.070	0.643	18.582713	-98.452037
Tehuizingo	113.30	1	0	7933	14.0	75.6	2.3	3.2	1.5	1.2	0.7	1.2	0.3	89.6	2.3	8.1	0.090	0.508	18.338373	-98.283030
Acatlán de Osorio	154.20	1	0	8630	10.9	82.1	1.4	2.6	0.7	0.8	0.5	0.6	0.4	93.0	1.4	5.6	0.076	0.523	18.182001	-98.058744
Chila	192.30	3	0	2380	4.0	77.2	4.6	8.2	3.5	1.7	0.4	0.4	0.0	81.2	4.6	14.2	0.075	0.517	17.966459	-97.864127
Lim. Edos. Term. Pue. Ppia. Oax.	200.30																			
T. Izq. Las Palmas	202.10	1	0	2435	4.4	82.3	4.2	4.6	1.7	1.7	0.8	0.3	0.0	86.7	4.2	9.1	0.080	0.556	17.884402	-97.839182
Huajuapán de León	219.30	1	0	3600	10.1	76.8	2.5	3.5	1.3	3.8	1.4	0.5	0.1	86.9	2.5	10.6	0.078	0.511	17.841229	-97.792783

19 CARR: Ramal a Asunción Ixtaltepec

CLAVE: 20624

RUTA: MEX-185

AÑO: 2025

LUGAR	ESTACION				CLASIFICACION VEHICULAR EN PORCIENTO										COORDENADAS					
	KM	TE	SC	TDPA	M	A	B	C2	C3	T3S2	T3S3	T3S2R4	OTROS	A	B	C	K'	D	LATITUD	LONGITUD
T. C. Coatzacoalcos - Salina Cruz	0.00	3	0	4220	19.4	76.0	1.0	1.9	1.1	0.4	0.1	0.1	0.0	95.4	1.0	3.6	0.089	0.501	16.447045	-95.035205
Asunción Ixtaltepec	9.70	1	0	3852	10.8	84.4	0.9	1.9	1.4	0.4	0.1	0.1	0.0	95.2	0.9	3.9	0.066	0.516	16.493234	-95.064093

20 CARR: Ramal a Monte Albán

CLAVE:

RUTA: MEX-190

AÑO: 2025

LUGAR	ESTACION				CLASIFICACION VEHICULAR EN PORCIENTO										COORDENADAS					
	KM	TE	SC	TDPA	M	A	B	C2	C3	T3S2	T3S3	T3S2R4	OTROS	A	B	C	K'	D	LATITUD	LONGITUD
T. C. Oaxaca - Tehuantepec	0.00																			
Chimalpopoca	1.80	3	0	22567	13.0	81.4	0.9	3.2	0.5	0.3	0.2	0.3	0.2	94.4	0.9	4.7	0.073	0.525	17.073361	-96.760881
T. Der. San Pedro Ixtlahuaca	2.75	3	0	2460	14.0	78.7	1.1	4.0	0.5	0.9	0.4	0.2	0.2	92.7	1.1	6.2	0.138	0.509	17.071683	-96.765682
Monte Albán	8.00																			

OAXACA

21 CARR: Ramal a Refinería Pemex (Refinería del Pacifico)

CLAVE:

RUTA: MEX

AÑO: 2025

LUGAR	ESTACION				CLASIFICACION VEHICULAR EN PORCIENTO													COORDENADAS		
	KM	TE	SC	TDPA	M	A	B	C2	C3	T3S2	T3S3	T3S2R4	OTROS	A	B	C	K'	D	LATITUD	LONGITUD
T. C. Coatzacoalcos - Salina Cruz	0.00	3	1	5795	7.2	83.9	1.5	3.2	1.3	1.2	0.4	0.9	0.4	91.1	1.5	7.4	0.103	0.594	16.220733	-95.200283
T. C. Coatzacoalcos - Salina Cruz	0.00	3	2	6185	7.0	84.2	1.4	3.3	1.4	0.9	0.5	0.9	0.4	91.2	1.4	7.4	0.084	0.594	16.220849	-95.200267
Refinería de Pemex	3.00																			

22 CARR: San Pablo Villa de Mitla - T. C. (Tuxtepec - Palomares)

CLAVE: 00106

RUTA: MEX-179

AÑO: 2025

LUGAR	ESTACION				CLASIFICACION VEHICULAR EN PORCIENTO													COORDENADAS		
	KM	TE	SC	TDPA	M	A	B	C2	C3	T3S2	T3S3	T3S2R4	OTROS	A	B	C	K'	D	LATITUD	LONGITUD
T. C. Oaxaca - Tehuantepec	0.00	3	0	5580	6.0	88.9	0.7	3.4	0.7	0.2	0.0	0.1	0.0	94.9	0.7	4.4	0.093	0.529	16.917898	-96.388554
San Pedro y San Pablo Ayutla	55.00	1	0	1809	5.5	89.4	0.6	1.9	1.4	0.3	0.3	0.5	0.1	94.9	0.6	4.5	0.077	0.525	17.017046	-96.082123
T. Der. Zacatepec	90.00	1	0	745	4.7	89.2	0.4	4.1	0.9	0.3	0.2	0.2	0.0	93.9	0.4	5.7	0.093	0.870	17.148112	-96.034315
Lim. Edos. Term. Oax. Ppia. Ver.	217.70																			
T. C. Tuxtepec - Ent. Palomares	238.70	1	0	1269	12.9	83.1	0.8	1.2	0.4	0.6	0.5	0.2	0.3	96.0	0.8	3.2	0.084	0.505	17.692655	-95.735043

23 CARR: Santiago Pinotepa Nacional - Salina Cruz

CLAVE: 20074

RUTA: MEX-200

AÑO: 2025

LUGAR	ESTACION				CLASIFICACION VEHICULAR EN PORCIENTO													COORDENADAS		
	KM	TE	SC	TDPA	M	A	B	C2	C3	T3S2	T3S3	T3S2R4	OTROS	A	B	C	K'	D	LATITUD	LONGITUD
Santiago Pinotepa Nacional	0.00	3	0	4951	15.4	75.8	1.4	3.1	1.2	2.2	0.6	0.2	0.1	91.2	1.4	7.4	0.072	0.517	16.329066	-98.022842
San Andrés Huaxpaltepec	18.07	3	0	4473	13.4	76.2	1.8	2.8	1.7	2.6	1.2	0.3	0.0	89.6	1.8	8.6	0.079	0.538	16.324449	-97.905506
San José del Progreso	59.51	1	0	4974	10.1	81.9	1.4	3.0	1.0	1.4	1.0	0.2	0.0	92.0	1.4	6.6	0.086	0.590	16.106164	-97.706787
T. Izq. Tututepec	65.85	1	0	5350	13.9	79.9	1.4	1.5	1.0	1.1	0.9	0.2	0.1	93.8	1.4	4.8	0.087	0.560	16.084712	-97.655566
T. Izq. Tututepec	65.85	3	0	6748	11.4	82.5	1.0	2.7	0.9	0.8	0.4	0.3	0.0	93.9	1.0	5.1	0.076	0.516	16.076139	-97.628199
Río Grande	91.00	1	0	6030	16.1	77.0	1.5	2.5	1.0	1.1	0.7	0.1	0.0	93.1	1.5	5.4	0.082	0.654	16.012311	-97.460116
Río Grande	91.00	3	0	5518	17.4	75.7	1.5	2.4	1.0	1.2	0.7	0.1	0.0	93.1	1.5	5.4	0.072	0.513	15.986483	-97.413231
San Isidro Llano Grande	110.50	1	0	4391	10.5	80.9	1.4	3.7	1.2	1.2	0.9	0.2	0.0	91.4	1.4	7.2	0.079	0.573	15.949317	-97.288721
T. Izq. Bajos de Chila	131.94	1	0	5828	10.1	82.4	1.4	2.6	1.3	1.1	0.8	0.2	0.1	92.5	1.4	6.1	0.075	0.593	15.914148	-97.123247
T. Izq. Bajos de Chila	131.94	3	0	9332	15.4	79.0	1.2	1.9	0.8	0.7	0.5	0.4	0.1	94.4	1.2	4.4	0.089	0.537	15.908014	-97.118023
T. Izq. Aeropuerto	137.40	1	0	8835	15.6	78.3	1.1	2.3	1.0	0.8	0.5	0.2	0.2	93.9	1.1	5.0	0.072	0.502	15.875419	-97.098691
Puerto Escondido	141.54	1	1	8882	16.1	78.2	0.7	2.4	0.8	0.6	0.4	0.5	0.3	94.3	0.7	5.0	0.068	0.569	15.868836	-97.083630
Puerto Escondido	141.54	1	2	9665	16.2	78.0	0.8	2.3	0.9	0.4	0.4	0.6	0.4	94.2	0.8	5.0	0.076	0.569	15.868914	-97.083598
Puerto Escondido	141.54	3	1	13017	16.9	79.4	0.6	2.0	0.6	0.3	0.1	0.1	0.0	96.3	0.6	3.1	0.076	0.509	15.853677	-97.053576
Puerto Escondido	141.54	3	1	9744	22.5	71.2	0.6	3.3	0.6	0.6	0.5	0.4	0.3	93.7	0.6	5.7	0.080	0.509	15.836325	-97.038349
Puerto Escondido	141.54	3	2	12436	18.1	77.8	0.7	2.3	0.5	0.3	0.1	0.2	0.0	95.9	0.7	3.4	0.076	0.509	15.853419	-97.053241
Puerto Escondido	141.54	3	2	9342	22.6	71.4	0.6	3.2	0.7	0.5	0.5	0.3	0.2	94.0	0.6	5.4	0.087	0.509	15.836591	-97.038472

OAXACA

23 CARR: Santiago Pinotepe Nacional - Salina Cruz

CLAVE: 20074

RUTA: MEX-200

AÑO: 2025

LUGAR	ESTACION				CLASIFICACION VEHICULAR EN PORCIENTO										COORDENADAS					
	KM	TE	SC	TDPA	M	A	B	C2	C3	T3S2	T3S3	T3S2R4	OTROS	A	B	C	K'	D	LATITUD	LONGITUD
T. Izq. Oaxaca (Cuota)	151.76	1	1	5194	16.0	76.6	1.1	3.3	1.1	1.1	0.5	0.2	0.1	92.6	1.1	6.3	0.090	0.586	15.811104	-96.993589
T. Izq. Oaxaca (Cuota)	151.76	1	2	4682	15.9	77.1	1.0	3.1	1.1	1.0	0.6	0.1	0.1	93.0	1.0	6.0	0.083	0.586	15.811198	-96.993542
T. Izq. Oaxaca (Cuota)	151.76	3	1	5001	16.6	75.1	1.0	4.5	0.9	1.0	0.7	0.1	0.1	91.7	1.0	7.3	0.074	0.527	15.806002	-96.975776
T. Izq. Oaxaca (Cuota)	151.76	3	2	4984	16.2	74.8	1.2	4.8	0.9	1.0	0.9	0.1	0.1	91.0	1.2	7.8	0.078	0.527	15.806096	-96.975738
T. Izq. Valdeflores Colotepec	167.00	1	1	3072	13.9	76.9	1.8	3.8	1.3	1.4	0.8	0.1	0.0	90.8	1.8	7.4	0.082	0.513	15.768347	-96.861367
T. Izq. Valdeflores Colotepec	167.00	1	2	2962	13.9	76.6	1.7	4.0	1.2	1.3	0.9	0.4	0.0	90.5	1.7	7.8	0.076	0.513	15.768451	-96.861373
T. Izq. Valdeflores Colotepec	167.00	3	1	2979	16.2	74.5	1.4	4.2	1.0	1.2	0.9	0.5	0.1	90.7	1.4	7.9	0.086	0.580	15.765129	-96.840099
T. Izq. Valdeflores Colotepec	167.00	3	2	2926	16.0	74.8	1.3	4.2	1.2	1.1	1.0	0.3	0.1	90.8	1.3	7.9	0.075	0.580	15.765326	-96.840551
T. Izq. Oaxaca	170.70	1	1	3140	14.6	74.9	1.6	4.2	1.1	1.6	1.3	0.6	0.1	89.5	1.6	8.9	0.085	0.518	15.760049	-96.826462
T. Izq. Oaxaca	170.70	1	2	3104	14.3	75.2	1.4	4.5	1.2	1.7	1.1	0.4	0.2	89.5	1.4	9.1	0.075	0.518	15.760132	-96.826409
T. Izq. Oaxaca	170.70	3	1	2759	15.1	74.1	1.9	5.2	1.3	1.2	0.9	0.2	0.1	89.2	1.9	8.9	0.091	0.564	15.748439	-96.813357
T. Izq. Oaxaca	170.70	3	2	2716	15.8	73.3	1.6	5.6	1.2	1.2	1.0	0.2	0.1	89.1	1.6	9.3	0.094	0.564	15.748554	-96.813329
San Isidro del Palmar	195.00	1	1	2889	11.1	76.4	2.2	7.1	0.8	1.5	0.7	0.1	0.1	87.5	2.2	10.3	0.082	0.519	15.722986	-96.617943
San Isidro del Palmar	195.00	1	2	2760	10.7	77.0	1.9	7.0	0.8	1.5	0.9	0.1	0.1	87.7	1.9	10.4	0.080	0.519	15.723083	-96.617918
T. Der. Mazunte	198.87	1	1	3677	12.8	75.3	1.3	6.7	1.0	1.4	1.1	0.2	0.2	88.1	1.3	10.6	0.075	0.536	15.716268	-96.585316
T. Der. Mazunte	198.87	1	2	3747	12.8	74.9	1.3	7.2	0.9	1.2	1.1	0.3	0.3	87.7	1.3	11.0	0.076	0.536	15.716409	-96.584902
T. Der. Mazunte	198.87	3	1	4646	20.0	69.6	1.5	5.6	0.7	1.2	0.9	0.4	0.1	89.6	1.5	8.9	0.080	0.503	15.719348	-96.576246
T. Der. Mazunte	198.87	3	2	4866	20.1	70.2	1.2	5.6	0.7	1.1	0.8	0.2	0.1	90.3	1.2	8.5	0.080	0.503	15.719485	-96.576218
T. Izq. Sta. María Tonameca	202.93	3	1	3992	15.3	75.4	1.0	5.1	0.6	1.6	0.8	0.1	0.1	90.7	1.0	8.3	0.093	0.595	15.732619	-96.531070
T. Izq. Sta. María Tonameca	202.93	3	2	4030	15.4	75.1	1.0	5.1	0.7	1.7	0.7	0.2	0.1	90.5	1.0	8.5	0.085	0.595	15.732714	-96.531111
T. Libramiento de Pochutla	209.15	1	1	4501	16.7	75.5	1.3	3.7	0.8	1.1	0.6	0.2	0.1	92.2	1.3	6.5	0.074	0.516	15.731754	-96.483816
T. Libramiento de Pochutla	209.15	1	2	4512	17.0	75.4	1.2	3.6	0.9	1.1	0.5	0.2	0.1	92.4	1.2	6.4	0.079	0.516	15.731881	-96.483769
X. C. Oaxaca - Puerto Ángel	209.95	1	0	10029	10.7	79.9	1.4	4.8	0.8	1.3	0.5	0.5	0.1	90.6	1.4	8.0	0.073	0.521	15.730623	-96.475771
X. C. Oaxaca - Puerto Ángel	209.95	3	0	7246	16.0	72.9	1.6	5.6	0.8	1.3	1.1	0.5	0.2	88.9	1.6	9.5	0.066	0.504	15.729392	-96.471934
T. Der. Cuatunalco	226.00	1	0	4238	7.0	79.4	2.1	5.6	1.3	2.2	0.9	0.7	0.8	86.4	2.1	11.5	0.072	0.520	15.733455	-96.350314
T. Der. Cuatunalco	226.00	3	0	4478	10.7	73.1	2.4	6.7	1.5	3.2	1.2	0.5	0.7	83.8	2.4	13.8	0.067	0.542	15.735223	-96.339937
T. C. El Zapote - Copalita	236.00	1	0	7253	11.9	76.6	1.5	5.8	1.0	1.2	0.9	0.3	0.8	88.5	1.5	10.0	0.068	0.513	15.758440	-96.276793
T. C. El Zapote - Copalita	236.00	3	0	10100	12.6	76.3	1.5	5.9	0.8	0.9	0.8	0.6	0.6	88.9	1.5	9.6	0.070	0.611	15.763926	-96.268844
T. Izq. Aeropuerto	237.68	3	0	10835	10.1	79.1	1.6	6.7	0.7	0.9	0.5	0.3	0.1	89.2	1.6	9.2	0.074	0.511	15.769959	-96.253231
T. Der. Santa Cruz Huatulco	250.00	1	0	11949	7.1	80.4	1.6	7.0	1.0	1.0	0.8	0.5	0.6	87.5	1.6	10.9	0.073	0.525	15.780310	-96.165097
T. Der. Santa Cruz Huatulco	250.00	3	0	5013	5.7	80.0	1.6	7.0	1.4	1.8	1.2	0.9	0.4	85.7	1.6	12.7	0.076	0.501	15.783906	-96.152619
T. Der. Tangolunda	254.50	1	0	4503	11.7	71.2	2.3	8.1	1.5	3.2	1.6	0.3	0.1	82.9	2.3	14.8	0.072	0.534	15.790170	-96.129346
T. Der. Tangolunda 2do Acceso	263.00	1	0	2858	13.7	67.8	3.1	6.8	2.0	4.0	2.4	0.1	0.1	81.5	3.1	15.4	0.070	0.630	15.818427	-96.068733
Barra de Copalita	264.00	1	0	4094	15.2	70.9	2.0	4.2	1.9	3.0	1.9	0.7	0.2	86.1	2.0	11.9	0.076	0.613	15.820003	-96.062374
Barra de Copalita	264.00	3	0	3618	12.8	69.6	2.8	9.1	1.3	2.3	1.8	0.2	0.1	82.4	2.8	14.8	0.072	0.536	15.819729	-96.054475

OAXACA

23 CARR: Santiago Pinotepa Nacional - Salina Cruz

CLAVE: 20074

RUTA: MEX-200

AÑO: 2025

LUGAR	ESTACION				CLASIFICACION VEHICULAR EN PORCIENTO										COORDENADAS					
	KM	TE	SC	TDPA	M	A	B	C2	C3	T3S2	T3S3	T3S2R4	OTROS	A	B	C	K'	D	LATITUD	LONGITUD
El Coyul	300.30	3	0	2538	6.3	76.7	2.6	6.8	1.8	3.6	1.8	0.3	0.1	83.0	2.6	14.4	0.078	0.503	15.918836	-95.800296
T. Der. Río Seco	307.00	3	0	2170	6.6	77.4	2.5	5.4	1.3	4.2	2.3	0.2	0.1	84.0	2.5	13.5	0.091	0.561	15.943346	-95.752935
Sta. Ma. Huamelula	316.00	1	0	2505	8.1	76.3	2.9	4.9	1.4	4.1	2.1	0.2	0.0	84.4	2.9	12.7	0.092	0.623	15.988611	-95.711036
Santiago Astata	320.00	1	0	2832	6.6	78.4	3.2	5.5	1.2	3.0	1.9	0.1	0.1	85.0	3.2	11.8	0.067	0.574	15.990104	-95.677503
T. Der. Concepción Bamba	352.10	1	0	2031	6.2	75.3	3.2	6.1	1.6	4.4	2.6	0.3	0.3	81.5	3.2	15.3	0.094	0.537	16.013817	-95.439475
Morro de Mazatán	365.50	1	0	3183	6.5	75.7	2.2	5.3	4.0	3.6	2.2	0.3	0.2	82.2	2.2	15.6	0.074	0.714	16.099448	-95.383652
T. C. La Ventosa - Salina Cruz (Cuota)	380.00	1	0	3256	4.0	81.0	2.2	6.3	1.8	2.3	1.7	0.4	0.3	85.0	2.2	12.8	0.068	0.638	16.137269	-95.304702
T. C. La Ventosa - Salina Cruz (Cuota)	380.00	3	0	3163	4.1	82.2	2.1	6.0	1.5	2.0	1.4	0.3	0.4	86.3	2.1	11.6	0.074	0.519	16.155104	-95.279019
Salina Cruz	394.00																			

24 CARR: Tapanatepec - Talismán

CLAVE: 00075

RUTA: MEX-200

AÑO: 2025

LUGAR	ESTACION				CLASIFICACION VEHICULAR EN PORCIENTO										COORDENADAS					
	KM	TE	SC	TDPA	M	A	B	C2	C3	T3S2	T3S3	T3S2R4	OTROS	A	B	C	K'	D	LATITUD	LONGITUD
Tapanatepec	0.00	3	0	5787	9.1	68.8	2.6	4.4	2.8	5.4	1.9	4.0	1.0	77.9	2.6	19.5	0.076	0.583	16.344974	-94.190602
Lim. Edos. Term. Oax. Ppia. Chis.	25.90																			
T. Der. Emiliano Zapata	26.20	1	0	3657	7.0	61.3	4.0	5.4	3.4	8.8	2.8	6.3	1.0	68.3	4.0	27.7	0.072	0.530	16.217015	-94.051553
T. Der. Emiliano Zapata	26.20	3	0	4173	7.3	62.7	3.3	7.3	2.0	8.3	2.1	6.1	0.9	70.0	3.3	26.7	0.074	0.537	16.214692	-94.039958
T. C. Libramiento de Arriaga	41.00	3	0	5678	8.3	69.9	2.6	3.2	4.7	5.9	1.6	3.0	0.8	78.2	2.6	19.2	0.081	0.514	16.224890	-93.925463
Arriaga	45.00	1	0	5997	8.4	67.3	3.0	2.9	4.9	5.9	2.3	4.2	1.1	75.7	3.0	21.3	0.075	0.565	16.221882	-93.936532
Arriaga	45.00	3	1	4304	17.9	70.9	2.5	5.9	1.3	0.7	0.4	0.3	0.1	88.8	2.5	8.7	0.074	0.538	16.237366	-93.882918
Arriaga	45.00	3	2	4958	17.6	72.0	2.1	5.9	1.3	0.5	0.3	0.3	0.0	89.6	2.1	8.3	0.075	0.538	16.238918	-93.883246
X. C. Arriaga- Ocozocoautla (Cuota)	47.00	3	1	4593	9.9	73.7	3.3	4.9	1.6	3.5	0.8	1.9	0.4	83.6	3.3	13.1	0.075	0.564	16.228340	-93.872112
X. C. Arriaga- Ocozocoautla (Cuota)	47.00	3	2	5197	9.8	73.8	3.6	5.2	1.4	3.3	0.8	1.7	0.4	83.6	3.6	12.8	0.084	0.564	16.232896	-93.876300
T. Der. Libramiento de Arriaga	49.50	1	1	5048	8.2	76.0	3.8	3.5	1.7	3.6	0.9	1.9	0.4	84.2	3.8	12.0	0.073	0.547	16.222761	-93.867490
T. Der. Libramiento de Arriaga	49.50	1	2	4358	8.2	75.7	3.9	3.6	1.7	3.5	0.9	2.0	0.5	83.9	3.9	12.2	0.078	0.547	16.222832	-93.867395
T. Der. Libramiento de Arriaga	49.50	3	1	5543	8.1	72.3	3.6	4.0	2.1	5.6	1.2	2.6	0.5	80.4	3.6	16.0	0.080	0.561	16.209178	-93.856202
T. Der. Libramiento de Arriaga	49.50	3	2	4796	8.2	71.4	3.6	4.2	2.0	5.9	1.2	2.7	0.8	79.6	3.6	16.8	0.099	0.561	16.209260	-93.856108
Acceso a Tonalá	65.60	1	1	6284	6.5	71.5	3.3	7.0	2.2	5.8	1.2	2.0	0.5	78.0	3.3	18.7	0.083	0.511	16.116780	-93.790041
Acceso a Tonalá	65.60	1	2	6205	6.4	70.7	3.5	7.2	2.4	6.2	1.0	2.1	0.5	77.1	3.5	19.4	0.081	0.511	16.116842	-93.789928
X. C. Ramal a Paredón	68.60	1	1	4609	5.8	72.1	3.0	5.3	2.7	6.6	1.5	2.4	0.6	77.9	3.0	19.1	0.087	0.541	16.082609	-93.770850
X. C. Ramal a Paredón	68.60	1	2	5179	5.9	72.9	3.1	5.5	2.5	6.2	1.2	2.2	0.5	78.8	3.1	18.1	0.087	0.541	16.082770	-93.770904
T. Der. Puerto Arista	73.00	1	1	3835	8.8	66.7	2.7	5.2	2.6	7.8	2.0	3.3	0.9	75.5	2.7	21.8	0.093	0.617	16.059929	-93.741819
T. Der. Puerto Arista	73.00	1	2	4197	8.5	67.3	2.8	4.9	2.7	7.7	1.8	3.5	0.8	75.8	2.8	21.4	0.074	0.617	16.059994	-93.741782
T. Der. Puerto Arista	73.00	3	1	3621	7.1	65.0	3.3	7.5	2.9	8.0	2.2	3.4	0.6	72.1	3.3	24.6	0.090	0.552	16.055839	-93.734530

OAXACA

24 CARR: Tapanatepec - Talismán

CLAVE: 00075

RUTA: MEX-200

AÑO: 2025

LUGAR	ESTACION				CLASIFICACION VEHICULAR EN PORCIENTO													COORDENADAS		
	KM	TE	SC	TDPA	M	A	B	C2	C3	T3S2	T3S3	T3S2R4	OTROS	A	B	C	K'	D	LATITUD	LONGITUD
T. Der. Puerto Arista	73.00	3	2	3612	7.2	65.4	4.0	6.4	3.0	8.6	1.7	3.1	0.6	72.6	4.0	23.4	0.096	0.552	16.055962	-93.734460
T. Der. Tres Picos	100.40	1	1	2989	6.2	63.8	5.1	5.8	3.1	9.1	2.5	3.5	0.9	70.0	5.1	24.9	0.096	0.510	15.922699	-93.554967
T. Der. Tres Picos	100.40	1	2	3063	6.2	63.6	5.0	6.0	3.1	9.2	2.5	3.5	0.9	69.8	5.0	25.2	0.104	0.510	15.922938	-93.555105
T. Der. Tres Picos	100.40	3	1	2739	5.4	62.8	3.9	7.9	2.8	9.4	2.8	4.2	0.8	68.2	3.9	27.9	0.093	0.637	15.906045	-93.522606
T. Der. Tres Picos	100.40	3	2	2805	5.3	62.6	3.9	7.9	2.8	9.5	2.9	4.2	0.9	67.9	3.9	28.2	0.087	0.637	15.906068	-93.522249
T. Der. Los Patos	114.75	1	1	3087	4.8	63.4	5.5	7.5	2.1	10.0	2.1	3.6	1.0	68.2	5.5	26.3	0.070	0.557	15.838346	-93.435753
T. Der. Los Patos	114.75	1	2	3082	4.8	62.7	5.7	7.6	2.4	9.8	2.0	4.1	0.9	67.5	5.7	26.8	0.079	0.557	15.839470	-93.435937
T. Der. Los Patos	114.75	3	1	3175	4.8	63.7	7.2	5.3	2.1	9.8	1.7	4.5	0.9	68.5	7.2	24.3	0.079	0.572	15.815278	-93.415791
T. Der. Los Patos	114.75	3	2	2933	4.9	63.5	7.2	5.3	2.2	9.8	1.8	4.3	1.0	68.4	7.2	24.4	0.084	0.572	15.815543	-93.415440
T. Der. San Isidro	125.00	1	1	3542	6.2	63.3	4.0	7.3	2.7	8.1	2.9	4.6	0.9	69.5	4.0	26.5	0.076	0.503	15.779808	-93.364955
T. Der. San Isidro	125.00	1	2	3019	6.2	62.9	4.3	7.3	2.7	8.1	3.1	4.5	0.9	69.1	4.3	26.6	0.079	0.503	15.781619	-93.364846
T. Der. San Isidro	125.00	3	1	3465	5.3	67.2	3.8	6.2	2.0	8.0	2.7	3.9	0.9	72.5	3.8	23.7	0.071	0.600	15.774680	-93.353323
T. Der. San Isidro	125.00	3	2	3293	5.2	66.8	3.9	6.3	2.0	8.1	2.7	4.0	1.0	72.0	3.9	24.1	0.085	0.600	15.776078	-93.353606
Pijijapan	144.45	1	1	7177	7.3	68.1	3.6	6.2	2.2	6.7	1.7	3.4	0.8	75.4	3.6	21.0	0.074	0.513	15.697784	-93.210585
Pijijapan	144.45	1	2	6588	7.2	68.3	3.6	6.2	2.2	6.7	1.6	3.5	0.7	75.5	3.6	20.9	0.080	0.513	15.699171	-93.211967
Valdivia	180.39	1	1	3791	20.1	54.7	4.0	5.6	2.1	7.9	1.4	3.2	1.0	74.8	4.0	21.2	0.071	0.520	15.510972	-92.955960
Valdivia	180.39	1	2	3572	20.1	54.7	4.0	5.4	2.2	7.9	1.3	3.4	1.0	74.8	4.0	21.2	0.079	0.520	15.511557	-92.956223
Valdivia	180.39	3	1	4368	13.7	64.5	3.5	3.2	2.1	7.6	1.6	2.9	0.9	78.2	3.5	18.3	0.074	0.551	15.499373	-92.940134
Valdivia	180.39	3	2	4405	13.7	63.5	3.6	3.2	2.1	7.8	1.8	3.4	0.9	77.2	3.6	19.2	0.083	0.551	15.499808	-92.940422
T. Der. Mapastepec	188.85	3	1	4982	17.7	62.9	3.4	3.2	1.8	6.9	1.0	2.4	0.7	80.6	3.4	16.0	0.071	0.527	15.454493	-92.880530
T. Der. Mapastepec	188.85	3	2	4817	17.7	62.5	3.5	3.3	1.9	6.8	1.0	2.5	0.8	80.2	3.5	16.3	0.081	0.527	15.454576	-92.879417
Sesecapa	197.20	3	1	3857	9.3	67.0	4.1	3.4	2.3	8.0	2.2	2.9	0.8	76.3	4.1	19.6	0.080	0.519	15.401187	-92.813904
Sesecapa	197.20	3	2	3552	9.6	65.9	4.6	3.2	2.2	8.3	1.8	3.5	0.9	75.5	4.6	19.9	0.089	0.519	15.401809	-92.814527
T. Der. Estación Soconusco	213.30	1	1	4963	11.6	66.2	3.4	3.6	2.7	6.1	1.2	4.2	1.0	77.8	3.4	18.8	0.072	0.564	15.338063	-92.711366
T. Der. Estación Soconusco	213.30	1	2	4758	11.6	66.5	3.0	3.8	2.5	6.3	1.4	3.9	1.0	78.1	3.0	18.9	0.085	0.564	15.350490	-92.693938
T. Der. Estación Soconusco	213.30	3	1	4743	14.4	64.8	2.8	3.1	2.6	7.5	1.2	2.8	0.8	79.2	2.8	18.0	0.071	0.553	15.331632	-92.703592
T. Der. Estación Soconusco	213.30	3	2	4918	14.2	65.1	3.2	3.0	2.5	7.1	1.0	3.0	0.9	79.3	3.2	17.5	0.086	0.553	15.346612	-92.685141
Villa Comaltitlán	233.00	1	1	5187	9.2	64.7	3.9	7.8	2.3	7.5	1.0	2.7	0.9	73.9	3.9	22.2	0.077	0.517	15.237365	-92.587488
Villa Comaltitlán	233.00	1	2	4590	9.4	65.5	3.7	7.5	2.0	7.3	1.1	2.8	0.7	74.9	3.7	21.4	0.083	0.517	15.237601	-92.587114
T. Der a Lázaro Cárdenas	238.20	1	1	5457	7.8	72.8	4.2	3.8	1.9	5.6	0.9	2.3	0.7	80.6	4.2	15.2	0.073	0.552	15.183276	-92.550395
T. Der a Lázaro Cárdenas	238.20	1	2	5426	8.0	72.4	4.3	3.6	1.9	5.4	1.0	2.6	0.8	80.4	4.3	15.3	0.085	0.552	15.184671	-92.550278
T. Libramiento de Huixtla Oeste	245.00																			
Huixtla	250.50	1	1	5255	10.2	65.2	4.1	7.1	1.7	6.2	1.9	2.7	0.9	75.4	4.1	20.5	0.078	0.503	15.157974	-92.505504
Huixtla	250.50	1	2	5283	10.0	65.6	3.9	7.4	1.6	6.0	2.2	2.5	0.8	75.6	3.9	20.5	0.084	0.503	15.158161	-92.505772
Huixtla	250.50	3	1	10719	10.0	77.2	1.8	4.2	1.4	3.3	0.6	1.2	0.3	87.2	1.8	11.0	0.083	0.549	15.129014	-92.443124

OAXACA

24 CARR: Tapanatepec - Talismán

CLAVE: 00075

RUTA: MEX-200

AÑO: 2025

LUGAR	ESTACION				CLASIFICACION VEHICULAR EN PORCIENTO										COORDENADAS					
	KM	TE	SC	TDPA	M	A	B	C2	C3	T3S2	T3S3	T3S2R4	OTROS	A	B	C	K'	D	LATITUD	LONGITUD
Huixtla	250.50	3	2	9683	9.8	76.7	2.2	4.4	1.6	3.5	0.4	1.1	0.3	86.5	2.2	11.3	0.075	0.549	15.129041	-92.443034
T. Libramiento de Huixtla Este	251.80																			
T. Izq. Hamburgo	262.70	3	1	7357	8.0	75.9	2.6	5.1	1.8	4.1	0.6	1.5	0.4	83.9	2.6	13.5	0.078	0.506	15.106342	-92.431387
T. Izq. Hamburgo	262.70	3	2	7804	8.4	76.1	2.4	5.3	1.5	4.0	0.7	1.3	0.3	84.5	2.4	13.1	0.080	0.506	15.106585	-92.431349
T. Izq. Huehuetán	273.70	1	1	8449	13.6	72.4	2.6	4.2	1.2	3.4	0.7	1.5	0.4	86.0	2.6	11.4	0.087	0.538	15.015467	-92.402679
T. Izq. Huehuetán	273.70	1	2	8098	13.4	71.9	2.8	4.3	1.2	3.6	0.7	1.7	0.4	85.3	2.8	11.9	0.073	0.538	15.015474	-92.402599
T. Izq. Huehuetán	273.70	3	1	8331	9.5	76.3	1.8	5.2	1.4	3.8	0.5	1.2	0.3	85.8	1.8	12.4	0.073	0.649	14.992459	-92.402421
T. Izq. Huehuetán	273.70	3	2	8111	9.5	76.0	1.8	5.4	1.4	3.8	0.5	1.3	0.3	85.5	1.8	12.7	0.123	0.649	14.992573	-92.402352
T. C. Libramiento Sur de Tapachula Oeste	283.61	3	1	8159	3.7	88.9	1.9	3.3	1.1	0.7	0.2	0.2	0.0	92.6	1.9	5.5	0.093	0.512	14.906147	-92.320560
T. C. Libramiento Sur de Tapachula Oeste	283.61	3	2	8163	4.0	88.5	1.6	3.4	1.0	1.1	0.1	0.3	0.0	92.5	1.6	5.9	0.092	0.512	14.906229	-92.320532
Tapachula	292.25	1	1	10548	6.3	78.6	1.8	6.2	1.6	2.6	1.5	1.1	0.3	84.9	1.8	13.3	0.081	0.502	14.911549	-92.336372
Tapachula	292.25	1	2	10720	6.0	79.9	1.6	6.5	1.4	2.3	1.3	0.8	0.2	85.9	1.6	12.5	0.081	0.502	14.911519	-92.336046
T. C. Libramiento Sur de Tapachula Este	298.00	1	1	11722	3.8	93.0	0.4	2.3	0.2	0.3	0.0	0.0	0.0	96.8	0.4	2.8	0.081	0.541	14.891156	-92.231656
T. C. Libramiento Sur de Tapachula Este	298.00	1	2	11508	4.0	92.8	0.6	2.0	0.3	0.3	0.0	0.0	0.0	96.8	0.6	2.6	0.089	0.541	14.891236	-92.231691
T. Der. Cd. Hidalgo	302.75	1	1	12079	7.2	86.2	0.8	3.5	0.3	1.3	0.2	0.3	0.2	93.4	0.8	5.8	0.083	0.546	14.908299	-92.203531
T. Der. Cd. Hidalgo	302.75	1	2	12470	7.0	86.7	0.6	3.3	0.2	1.4	0.2	0.5	0.1	93.7	0.6	5.7	0.085	0.546	14.908407	-92.203529
Tuxtla Chico	307.00	1	0	14930	10.9	84.0	0.5	3.6	0.3	0.3	0.4	0.0	0.0	94.9	0.5	4.6	0.083	0.530	14.930895	-92.164821
Talismán	310.77	1	0	3096	32.6	63.9	0.4	2.0	0.4	0.4	0.1	0.1	0.1	96.5	0.4	3.1	0.086	0.515	14.961611	-92.150386

25 CARR: Tapanatepec - Tuxtla Gutiérrez

CLAVE: 00060

RUTA: MEX-190

AÑO: 2025

LUGAR	ESTACION				CLASIFICACION VEHICULAR EN PORCIENTO										COORDENADAS					
	KM	TE	SC	TDPA	M	A	B	C2	C3	T3S2	T3S3	T3S2R4	OTROS	A	B	C	K'	D	LATITUD	LONGITUD
Tapanatepec	0.00	3	0	2400	11.6	79.1	2.1	4.0	1.1	1.5	0.4	0.1	0.1	90.7	2.1	7.2	0.088	0.533	16.371141	-94.184587
Libramiento de San Pedro Tapanatepec	0.75	3	0	1386	15.3	59.2	4.3	7.6	2.7	4.5	6.1	0.3	0.0	74.5	4.3	21.2	0.079	0.541	16.372966	-94.172254
Lim. Edos. Term. Oax. Ppia. Chis.	17.90																			
Rizo de Oro	26.60	1	0	957	20.2	61.2	3.3	3.9	1.1	4.2	5.6	0.5	0.0	81.4	3.3	15.3	0.088	0.524	16.475387	-94.084572
T. Der. Arriaga	56.80	1	0	2717	18.6	68.6	1.5	5.2	1.2	1.5	3.1	0.3	0.0	87.2	1.5	11.3	0.088	0.618	16.567319	-93.852312
T. Der. Arriaga	56.80	3	0	3939	13.5	71.3	1.3	7.3	1.7	2.5	2.0	0.3	0.1	84.8	1.3	13.9	0.093	0.522	16.573830	-93.842014
Cintalapa	75.60	1	0	6342	15.1	75.9	0.8	3.3	1.0	1.6	1.5	0.6	0.2	91.0	0.8	8.2	0.074	0.513	16.652605	-93.755543
T. Der. Jiquipilas	82.00	1	0	8072	8.9	81.4	2.6	3.1	1.5	1.3	0.5	0.5	0.2	90.3	2.6	7.1	0.084	0.510	16.687836	-93.667392
T. Der. Jiquipilas	82.00	3	0	5359	7.0	78.5	2.4	5.0	2.9	2.2	1.5	0.4	0.1	85.5	2.4	12.1	0.083	0.520	16.688245	-93.661806
T. C. Arriaga - Ocozocoautla (Cuota)	96.20	1	0	5168	3.7	81.8	1.7	5.9	2.4	1.9	1.5	0.8	0.3	85.5	1.7	12.8	0.076	0.510	16.686114	-93.545869
Ocozocoautla	123.29	1	0	4926	13.7	79.3	0.5	2.7	1.6	1.0	0.9	0.2	0.1	93.0	0.5	6.5	0.091	0.516	16.772246	-93.391654
Ocozocoautla	123.29	3	0	5325	13.5	79.1	1.3	4.4	0.7	0.3	0.2	0.4	0.1	92.6	1.3	6.1	0.081	0.502	16.757875	-93.362362

OAXACA

25 CARR: Tapanatepec - Tuxtla Gutiérrez

CLAVE: 00060

RUTA: MEX-190

AÑO: 2025

LUGAR	ESTACION				CLASIFICACION VEHICULAR EN PORCIENTO												COORDENADAS			
	KM	TE	SC	TDPA	M	A	B	C2	C3	T3S2	T3S3	T3S2R4	OTROS	A	B	C	K'	D	LATITUD	LONGITUD
T. Izq. Aeropuerto	132.70	1	0	5160	11.3	78.3	1.0	6.8	1.2	0.3	0.7	0.2	0.2	89.6	1.0	9.4	0.089	0.557	16.752935	-93.340229
T. Izq. Aeropuerto	132.70	3	1	7935	3.9	80.4	2.4	5.5	1.6	3.4	0.9	1.5	0.4	84.3	2.4	13.3	0.093	0.522	16.758088	-93.327656
T. Izq. Aeropuerto	132.70	3	2	8379	3.7	81.9	2.2	5.3	1.4	3.1	0.8	1.3	0.3	85.6	2.2	12.2	0.083	0.522	16.758116	-93.327819
T. Izq. Berriozábal (1º Acceso)	136.40	1	1	10865	4.2	78.8	3.1	6.9	1.5	2.6	1.1	1.5	0.3	83.0	3.1	13.9	0.084	0.526	16.767496	-93.296073
T. Izq. Berriozábal (1º Acceso)	136.40	1	2	11024	4.6	78.7	3.0	6.8	1.5	2.8	0.7	1.5	0.4	83.3	3.0	13.7	0.082	0.526	16.767582	-93.295969
T. Izq. Berriozábal (1º Acceso)	136.40	3	1	11315	3.9	83.1	3.1	4.5	1.3	1.5	0.8	1.3	0.5	87.0	3.1	9.9	0.069	0.540	16.768914	-93.280681
T. Izq. Berriozábal (1º Acceso)	136.40	3	2	11194	4.0	82.9	3.0	4.9	1.4	1.9	0.6	1.0	0.3	86.9	3.0	10.1	0.080	0.540	16.768898	-93.281666
T. Izq. San Fernando	151.70	1	1	20157	3.0	87.6	1.1	4.4	1.3	1.1	0.6	0.7	0.2	90.6	1.1	8.3	0.082	0.582	16.770518	-93.197108
T. Izq. San Fernando	151.70	1	2	17611	3.4	86.5	1.5	4.8	1.3	0.9	0.5	0.7	0.4	89.9	1.5	8.6	0.071	0.582	16.770593	-93.197056
Tuxtla Gutiérrez	159.00	1	1	14460	3.9	84.5	1.4	6.1	1.6	1.0	0.8	0.5	0.2	88.4	1.4	10.2	0.094	0.562	16.767587	-93.192833
Tuxtla Gutiérrez	159.00	1	2	13961	4.3	84.0	1.7	6.0	1.0	1.4	0.8	0.5	0.3	88.3	1.7	10.0	0.080	0.562	16.767672	-93.192767

26 CARR: Tehuacán - Huajuapán de León

CLAVE: 00211

RUTA: MEX-125

AÑO: 2025

LUGAR	ESTACION				CLASIFICACION VEHICULAR EN PORCIENTO												COORDENADAS			
	KM	TE	SC	TDPA	M	A	B	C2	C3	T3S2	T3S3	T3S2R4	OTROS	A	B	C	K'	D	LATITUD	LONGITUD
Tehuacán	0.00	3	1	10299	7.1	83.4	1.2	4.6	1.4	1.2	0.5	0.4	0.2	90.5	1.2	8.3	0.070	0.517	18.436774	-97.401486
Tehuacán	0.00	3	2	10133	7.2	83.9	0.6	4.7	1.4	1.1	0.5	0.3	0.3	91.1	0.6	8.3	0.077	0.517	18.436633	-97.401527
Zapotitlán Salinas	28.00	1	0	2884	9.1	73.6	1.4	8.2	2.7	2.3	1.7	0.7	0.3	82.7	1.4	15.9	0.089	0.550	18.334050	-97.461204
Lim. Edos. Term. Pue. Ppia. Oax.	55.80																			
Santiago Chazumba	63.02	1	0	1406	5.7	74.6	1.3	6.7	3.2	3.7	3.5	0.8	0.5	80.3	1.3	18.4	0.095	0.507	18.200930	-97.673789
Santiago Chazumba	63.02	3	0	2050	6.1	74.6	1.7	6.8	2.4	3.5	3.6	0.9	0.4	80.7	1.7	17.6	0.094	0.585	18.181308	-97.681195
T. Izq. Santa María Camotlán	103.13	1	0	1552	6.4	73.3	1.8	7.0	3.3	3.6	3.4	0.9	0.3	79.7	1.8	18.5	0.081	0.568	17.907572	-97.687590
T. C. Huajuapán de León - Oaxaca	119.40	1	0	10281	13.5	79.7	0.8	3.3	0.7	0.9	0.5	0.4	0.2	93.2	0.8	6.0	0.071	0.592	17.821276	-97.755666

27 CARR: Tuxtepec - Ent. Palomares

CLAVE: 00180

RUTA: MEX-147

AÑO: 2025

LUGAR	ESTACION				CLASIFICACION VEHICULAR EN PORCIENTO												COORDENADAS			
	KM	TE	SC	TDPA	M	A	B	C2	C3	T3S2	T3S3	T3S2R4	OTROS	A	B	C	K'	D	LATITUD	LONGITUD
T. C. Tuxtepec - Oaxaca	0.00	3	0	4584	10.4	73.3	1.5	8.6	2.2	2.1	1.1	0.5	0.3	83.7	1.5	14.8	0.090	0.576	18.038253	-96.161455
X. C. El Rodeo - Reforma	15.20	3	0	2930	9.3	77.3	1.6	6.7	2.1	1.7	1.1	0.2	0.0	86.6	1.6	11.8	0.080	0.577	17.950226	-96.069714
Lim. Edos. Term. Oax. Ppia. Ver.	40.00																			
X. C. Playa Vicente - El Tomate	48.16	1	0	2426	15.0	73.9	2.1	3.7	2.5	1.5	0.6	0.3	0.4	88.9	2.1	9.0	0.071	0.538	17.783662	-95.833173
X. C. Playa Vicente - El Tomate	48.16	3	0	3086	13.6	76.8	1.1	3.9	1.6	0.9	1.0	0.3	0.8	90.4	1.1	8.5	0.082	0.536	17.782334	-95.828712
T. Der. Xochiapa	65.00	3	0	1713	15.7	74.5	2.1	2.7	1.7	1.5	0.9	0.5	0.4	90.2	2.1	7.7	0.072	0.561	17.694330	-95.721560

OAXACA

27 CARR: Tuxtepec - Ent. Palomares

CLAVE: 00180

RUTA: MEX-147

AÑO: 2025

LUGAR	ESTACION				CLASIFICACION VEHICULAR EN PORCIENTO										COORDENADAS					
	KM	TE	SC	TDPA	M	A	B	C2	C3	T3S2	T3S3	T3S2R4	OTROS	A	B	C	K'	D	LATITUD	LONGITUD
T. Izq. San Juan Evangelista	81.20	1	0	1568	19.5	70.4	1.8	3.0	2.9	1.1	0.6	0.6	0.1	89.9	1.8	8.3	0.075	0.547	17.617565	-95.639382
Lim. Edos. Term. Ver. Ppia. Oax.	87.00																			
María Lombardo de Caso	110.50	1	0	4180	13.3	77.2	0.6	6.9	0.8	0.6	0.3	0.2	0.1	90.5	0.6	8.9	0.072	0.572	17.454211	-95.437672
T. C. Coatzacoalcos - Salina Cruz	175.00	1	0	1993	15.4	78.4	1.0	3.1	0.7	0.6	0.5	0.2	0.1	93.8	1.0	5.2	0.099	0.584	17.138355	-95.070462

28 CARR: Tuxtepec - T. C. (Oaxaca - Tehuantepec)

CLAVE: 20090

RUTA: MEX-175

AÑO: 2025

LUGAR	ESTACION				CLASIFICACION VEHICULAR EN PORCIENTO										COORDENADAS					
	KM	TE	SC	TDPA	M	A	B	C2	C3	T3S2	T3S3	T3S2R4	OTROS	A	B	C	K'	D	LATITUD	LONGITUD
Tuxtepec	0.00	3	1	7258	19.1	74.2	1.0	3.8	0.6	0.5	0.3	0.4	0.1	93.3	1.0	5.7	0.079	0.515	18.053410	-96.153731
Tuxtepec	0.00	3	2	7994	18.9	74.2	1.1	3.7	0.7	0.6	0.3	0.4	0.1	93.1	1.1	5.8	0.075	0.515	18.055442	-96.152358
T. Izq. Palomares	5.75	3	0	6545	28.2	67.4	0.6	2.9	0.5	0.2	0.1	0.1	0.0	95.6	0.6	3.8	0.084	0.566	18.034548	-96.164741
San José Chiltepec	17.93	3	0	4360	14.4	82.6	0.5	1.6	0.6	0.2	0.1	0.0	0.0	97.0	0.5	2.5	0.085	0.599	17.944105	-96.173028
Valle Nacional	47.07	1	0	4434	10.6	86.6	0.5	1.5	0.5	0.2	0.1	0.0	0.0	97.2	0.5	2.3	0.085	0.581	17.779577	-96.292637
Valle Nacional	47.07	3	0	3641	8.8	87.0	0.7	2.5	0.5	0.5	0.0	0.0	0.0	95.8	0.7	3.5	0.089	0.515	17.767359	-96.310703
La Esperanza	79.85	3	0	569	4.5	88.6	0.9	4.5	1.5	0.0	0.0	0.0	0.0	93.1	0.9	6.0	0.111	0.587	17.624769	-96.366619
Puerta del Sol	125.00	3	0	710	4.1	89.3	0.8	4.0	1.5	0.3	0.0	0.0	0.0	93.4	0.8	5.8	0.094	0.612	17.528863	-96.511647
T. Der. Ixtepeji	181.39	3	0	2467	9.6	85.3	0.5	2.6	1.4	0.5	0.0	0.1	0.0	94.9	0.5	4.6	0.120	0.685	17.238643	-96.562727
T. Izq. Yuvila	193.67	1	0	2760	10.2	84.9	0.4	2.6	1.4	0.4	0.0	0.1	0.0	95.1	0.4	4.5	0.140	0.813	17.175942	-96.605495
T. C. Oaxaca - Tehuantepec	212.70	1	1	7296	11.6	85.2	0.3	2.0	0.6	0.2	0.0	0.1	0.0	96.8	0.3	2.9	0.093	0.512	17.074316	-96.668861
T. C. Oaxaca - Tehuantepec	212.70	1	2	6954	12.1	84.8	0.1	2.2	0.6	0.2	0.0	0.0	0.0	96.9	0.1	3.0	0.095	0.512	17.074247	-96.668807

29 CARR: Yucudaa - Santiago Pinotepa Nacional

CLAVE: 20030

RUTA: MEX-125

AÑO: 2025

LUGAR	ESTACION				CLASIFICACION VEHICULAR EN PORCIENTO										COORDENADAS					
	KM	TE	SC	TDPA	M	A	B	C2	C3	T3S2	T3S3	T3S2R4	OTROS	A	B	C	K'	D	LATITUD	LONGITUD
T. C. Huajuapán de León - Oaxaca	0.00	3	0	2819	4.5	81.3	2.8	7.6	1.6	1.2	0.6	0.3	0.1	85.8	2.8	11.4	0.065	0.563	17.569143	-97.425098
Yolomécatl	24.40	3	0	3085	8.8	78.6	2.4	7.2	1.5	0.7	0.5	0.3	0.0	87.4	2.4	10.2	0.075	0.526	17.459661	-97.574890
Tlaxiaco	57.00	3	0	4664	10.9	84.3	0.7	2.8	0.8	0.2	0.2	0.1	0.0	95.2	0.7	4.1	0.087	0.608	17.237016	-97.699092
T. Der. Santiago Juxcatlán	104.00	1	0	872	5.9	78.0	2.9	9.4	2.4	0.7	0.7	0.0	0.0	83.9	2.9	13.2	0.080	0.729	17.152709	-97.880481
Putla de Guerrero	145.00	1	0	3943	6.6	87.3	0.7	2.9	1.6	0.5	0.3	0.1	0.0	93.9	0.7	5.4	0.084	0.596	17.038006	-97.915536
Cacahuatpec	229.00	1	0	1368	12.7	82.1	1.5	1.9	1.2	0.4	0.1	0.1	0.0	94.8	1.5	3.7	0.077	0.547	16.625785	-98.141443
T. C. Las Cruces - Pinotepa Nacional	268.00	1	0	4247	11.8	84.4	0.5	1.7	0.9	0.3	0.2	0.2	0.0	96.2	0.5	3.3	0.075	0.502	16.381919	-98.090409

OAXACA

30 CARR: Barranca Larga - Ventanilla (Cuota)

CLAVE:

RUTA: MEX-175D

AÑO: 2025

LUGAR	ESTACION				CLASIFICACION VEHICULAR EN PORCIENTO										COORDENADAS					
	KM	TE	SC	TDPA	M	A	B	C2	C3	T3S2	T3S3	T3S2R4	OTROS	A	B	C	K'	D	LATITUD	LONGITUD
Barranca Larga	0.00	3	0	2824	2.7	80.8	3.6	8.8	2.2	1.2	0.5	0.2	0.0	83.5	3.6	12.9	0.074	0.538	16.475844	-96.741338
Plaza de Cobro Barranca Larga	1.84	2	0	3518	2.5	87.5	2.1	3.5	2.6	1.0	0.4	0.1	0.3	90.0	2.1	7.9	0.080	0.500	16.469542	-96.744722
Ent. San Vicente	12.54	1	0	3369	2.9	82.4	2.8	7.9	2.1	1.3	0.4	0.2	0.0	85.3	2.8	11.9	0.081	0.591	16.407488	-96.805482
Ent. San Vicente	12.54	3	0	3430	2.2	82.5	3.2	7.7	2.3	1.3	0.6	0.2	0.0	84.7	3.2	12.1	0.073	0.544	16.402056	-96.809762
Ent. Santa Catarina	27.82	1	0	3159	2.7	81.0	3.1	8.7	2.4	1.4	0.6	0.1	0.0	83.7	3.1	13.2	0.077	0.560	16.290156	-96.796556
Ent. Santa Catarina	27.82	3	0	3127	2.4	81.5	3.0	8.7	2.4	1.4	0.5	0.1	0.0	83.9	3.0	13.1	0.073	0.533	16.283333	-96.794699
Ent. San Pablo	35.80	1	0	3187	2.2	83.4	3.1	8.4	1.4	0.9	0.3	0.3	0.0	85.6	3.1	11.3	0.075	0.643	16.228505	-96.790399
Ent. San Pablo	35.80	3	0	3658	4.4	81.2	2.9	7.7	2.0	1.1	0.4	0.3	0.0	85.6	2.9	11.5	0.074	0.576	16.224058	-96.786990
Ent. El Limar	46.00	3	0	3329	3.4	81.1	2.9	8.2	2.1	1.6	0.5	0.2	0.0	84.5	2.9	12.6	0.078	0.574	16.157011	-96.824957
Ent. Gavilán	56.62	1	0	3290	3.4	80.6	3.0	8.4	2.3	1.2	0.6	0.5	0.0	84.0	3.0	13.0	0.076	0.536	16.121541	-96.872209
Ent. Gavilán	56.62	3	0	3269	3.1	80.8	3.0	8.9	2.1	1.4	0.5	0.2	0.0	83.9	3.0	13.1	0.078	0.569	16.113373	-96.869727
Ent. San Antonio Lalana	62.60	1	0	3185	2.8	81.9	3.0	8.1	1.7	1.6	0.4	0.4	0.1	84.7	3.0	12.3	0.080	0.598	16.073785	-96.863217
Ent. San Antonio Lalana	62.60	3	0	3954	4.5	79.1	2.3	6.5	5.6	1.0	0.5	0.5	0.0	83.6	2.3	14.1	0.072	0.507	16.070451	-96.862805
Ent. Cieneguilla	66.89	1	0	3778	3.9	82.7	1.9	6.1	3.7	1.2	0.3	0.1	0.1	86.6	1.9	11.5	0.085	0.509	16.048557	-96.870721
Ent. Cieneguilla	66.89	3	0	3548	3.6	81.9	3.0	7.8	2.1	1.1	0.3	0.2	0.0	85.5	3.0	11.5	0.078	0.509	16.045095	-96.866144
Plaza de Cobro Ventanilla	90.60	2	0	3497	2.7	87.7	2.1	3.1	2.6	1.0	0.4	0.1	0.3	90.4	2.1	7.5	0.080	0.500	15.907331	-96.930125
Santa María Colotepec	93.12	1	0	3269	3.5	81.5	3.3	8.3	1.9	1.1	0.3	0.1	0.0	85.0	3.3	11.7	0.079	0.545	15.905923	-96.937906
Ventanilla	104.30	1	0	4124	4.1	83.7	2.5	6.7	1.7	0.9	0.3	0.1	0.0	87.8	2.5	9.7	0.073	0.550	15.814698	-96.981255

31 CARR: Cuacnopalan - Oaxaca (Cuota)

CLAVE: 00109

RUTA: MEX-135D

AÑO: 2025

LUGAR	ESTACION				CLASIFICACION VEHICULAR EN PORCIENTO										COORDENADAS					
	KM	TE	SC	TDPA	M	A	B	C2	C3	T3S2	T3S3	T3S2R4	OTROS	A	B	C	K'	D	LATITUD	LONGITUD
T. C. Puebla - Acatzingo (Cuota)	0.00	3	0	13119	1.2	70.5	6.4	7.1	3.3	6.3	1.7	2.7	0.8	71.7	6.4	21.9	0.059	0.530	18.818736	-97.491166
T. Der. Cuacnopalan	1.80	3	0	12745	1.1	71.8	6.0	7.9	2.8	5.4	1.6	2.7	0.7	72.9	6.0	21.1	0.062	0.551	18.812340	-97.490727
Plaza de Cobro Tehuacán	40.00	2	0	12485	0.8	72.8	4.6	5.4	5.3	6.2	1.3	2.8	0.8	73.6	4.6	21.8	0.083	0.500	18.487088	-97.456196
Plaza de Cobro Tehuacán	40.00	3	0	6916	3.5	67.7	8.6	5.8	3.1	4.2	2.4	3.8	0.9	71.2	8.6	20.2	0.068	0.626	18.483879	-97.456505
X. C. Tehuacán - Huajuapán de León	48.00	3	0	6885	4.2	63.9	7.5	13.9	1.9	3.5	1.5	2.9	0.7	68.1	7.5	24.4	0.064	0.540	18.421326	-97.411817
T. Izq. San Gabriel Chilac	61.00	3	0	7390	2.4	71.7	7.6	5.3	2.9	4.6	1.5	3.2	0.8	74.1	7.6	18.3	0.066	0.557	18.323599	-97.367670
Plaza de Cobro Miahuatlán	70.70	2	0	6517	1.0	70.6	6.2	4.4	6.3	5.9	1.6	3.2	0.8	71.6	6.2	22.2	0.083	0.500	18.264632	-97.315617
Plaza de Cobro Miahuatlán	70.70	3	0	7735	2.5	67.2	8.4	6.5	3.3	6.3	1.5	4.1	0.2	69.7	8.4	21.9	0.077	0.546	18.260741	-97.311513
Lim. Edos. Term. Pue. Ppia. Oax.	83.50																			
T. Izq. Tepelmeme	123.60	3	0	6424	3.3	66.7	10.1	6.0	3.1	5.2	1.6	3.1	0.9	70.0	10.1	19.9	0.065	0.504	17.857657	-97.378087
X. C. Tlacotepec - Tepelmeme	125.78	3	0	7807	4.2	63.7	10.1	6.3	3.4	5.9	2.6	3.0	0.8	67.9	10.1	22.0	0.064	0.566	17.877904	-97.374580
Plaza de Cobro Coixtlahuaca	141.30	2	0	5377	1.0	67.4	6.8	4.6	6.9	6.8	1.6	3.9	1.0	68.4	6.8	24.8	0.083	0.500	17.726021	-97.353781

OAXACA

31 CARR: Cuacnopalan - Oaxaca (Cuota)

CLAVE: 00109

RUTA: MEX-135D

AÑO: 2025

LUGAR	ESTACION				CLASIFICACION VEHICULAR EN PORCIENTO														COORDENADAS	
	KM	TE	SC	TDPA	M	A	B	C2	C3	T3S2	T3S3	T3S2R4	OTROS	A	B	C	K'	D	LATITUD	LONGITUD
T. Izq. Asunción Nochistlán	175.50	1	0	5304	2.4	67.5	8.3	6.0	3.6	5.3	2.6	3.4	0.9	69.9	8.3	21.8	0.065	0.514	17.470340	-97.251694
T. Izq. Asunción Nochistlán	175.50	3	0	6544	2.0	70.3	5.0	10.5	3.2	4.3	1.9	2.5	0.3	72.3	5.0	22.7	0.064	0.533	17.451551	-97.237236
Plaza de Cobro Huitzo	220.00	2	0	7669	1.4	76.7	4.5	4.1	4.7	4.4	0.9	2.6	0.7	78.1	4.5	17.4	0.083	0.500	17.275031	-96.915296
Plaza de Cobro Huitzo	220.00	3	1	4628	2.7	74.0	5.3	7.8	2.6	3.6	1.1	2.2	0.7	76.7	5.3	18.0	0.078	0.584	17.269851	-96.909105
Plaza de Cobro Huitzo	220.00	3	2	5085	2.5	73.8	5.4	7.9	2.7	3.3	1.1	2.4	0.9	76.3	5.4	18.3	0.078	0.584	17.269911	-96.909049
T. C. Huajuapán de León - Oaxaca	242.70	1	1	6262	2.5	71.8	4.6	7.6	3.6	5.1	1.4	2.6	0.8	74.3	4.6	21.1	0.077	0.536	17.147273	-96.785079
T. C. Huajuapán de León - Oaxaca	242.70	1	2	5896	2.7	71.6	4.4	7.4	3.8	5.0	1.6	2.5	1.0	74.3	4.4	21.3	0.086	0.536	17.147351	-96.785083

32 CARR: Mitla - Tehuantepec (Cuota)

CLAVE:

RUTA: MEX-190D

AÑO: 2025

LUGAR	ESTACION				CLASIFICACION VEHICULAR EN PORCIENTO														COORDENADAS	
	KM	TE	SC	TDPA	M	A	B	C2	C3	T3S2	T3S3	T3S2R4	OTROS	A	B	C	K'	D	LATITUD	LONGITUD
Ent. C. Oaxaca - Tehuantepec	0.00	3	0	1549	4.2	86.4	0.7	4.0	3.0	0.7	0.9	0.1	0.0	90.6	0.7	8.7	0.076	0.556	16.913697	-96.394262
Plaza de Cobro Mitla	3.58																			
Ent. Mitla	7.90	1	0	1639	4.4	86.9	1.0	4.5	1.6	0.8	0.7	0.1	0.0	91.3	1.0	7.7	0.076	0.508	16.918350	-96.333278
Ent. Mitla	7.90	3	0	1809	4.1	86.5	1.1	5.5	1.8	0.4	0.5	0.1	0.0	90.6	1.1	8.3	0.089	0.615	16.927766	-96.322437
Ent. Hierve el Agua	19.10	1	0	1840	4.0	87.0	0.9	5.0	1.6	0.6	0.6	0.2	0.1	91.0	0.9	8.1	0.082	0.573	16.927252	-96.259921
Ent. Hierve el Agua	19.10	3	0	2318	4.7	86.1	0.7	5.0	2.1	0.5	0.7	0.1	0.1	90.8	0.7	8.5	0.079	0.599	16.921854	-96.250937
Ent. Sta. María Albarradas	28.00	1	0	2308	4.8	86.5	0.6	4.8	1.8	0.7	0.4	0.3	0.1	91.3	0.6	8.1	0.076	0.623	16.954649	-96.201390
Ent. Ayutla	36.62	1	0	2018	2.8	91.0	0.4	2.8	2.0	0.4	0.5	0.1	0.0	93.8	0.4	5.8	0.087	0.574	16.966299	-96.129345
Ent. Ayutla	36.62	3	0	1037	4.3	86.8	1.0	3.6	2.5	0.7	0.8	0.2	0.1	91.1	1.0	7.9	0.073	0.592	16.961058	-96.114433
Ent. Loma Larga	39.80	3	0	496	4.6	87.3	0.7	3.7	2.0	0.4	1.2	0.1	0.0	91.9	0.7	7.4	0.091	0.533	16.954940	-96.096661
Ent. Tepuxtepec	47.50	1	0	584	5.1	88.6	0.3	3.3	1.6	0.3	0.6	0.1	0.1	93.7	0.3	6.0	0.084	0.510	16.935606	-96.077896
Ent. Tepuxtepec	47.50	3	0	610	6.7	88.5	0.3	2.6	1.3	0.1	0.4	0.1	0.0	95.2	0.3	4.5	0.082	0.600	16.922323	-96.081200
Ent. Lachixila	104.12																			
Ent. Lachiguirí	127.20																			
Ent. Lachiguirí II	131.00																			
Ent. Giechiquero	144.70																			
Ent. Jalapa del Marqués	148.50																			
Plaza de Cobro Tehuantepec	149.50																			
Ent. Tehuantepec II	170.00																			

OAXACA

33 CARR: Salina Cruz - La Ventosa (Cuota)

CLAVE: 00275

RUTA: MEX-185D

AÑO: 2025

LUGAR	ESTACION				CLASIFICACION VEHICULAR EN PORCIENTO													COORDENADAS			
	KM	TE	SC	TDPA	M	A	B	C2	C3	T3S2	T3S3	T3S2R4	OTROS	A	B	C	K'	D	LATITUD	LONGITUD	
T. C. Santiago Pinotepa Nacional - Salina Cruz	0.00																				
Plaza de Cobro Tehuantepec	1.89	2	0	1133	4.3	77.3	0.8	4.2	3.1	4.8	3.0	2.0	0.5	81.6	0.8	17.6	0.082	0.500	16.162185	-95.289280	
X. C. Oaxaca - Tehuantepec	23.19	1	0	1687	7.1	72.8	2.9	6.1	3.0	3.7	2.2	2.0	0.2	79.9	2.9	17.2	0.090	0.592	16.327198	-95.279560	
X. C. Oaxaca - Tehuantepec	23.19	3	0	3353	2.4	74.6	2.2	3.4	2.6	4.0	2.8	7.2	0.8	77.0	2.2	20.8	0.101	0.535	16.338832	-95.276464	
T. Izq. Mitla - Tehuantepec (cuota)	33.30	1	0	3322	3.9	76.4	3.7	4.2	2.0	5.1	3.2	0.6	0.9	76.1	3.7	20.2	0.091	0.656	16.405883	-95.240808	
T. Izq. Mitla - Tehuantepec (cuota)	33.30	3	0	3121	4.2	72.9	3.8	3.9	1.8	4.3	2.7	5.4	1.0	77.1	3.8	19.1	0.080	0.520	16.430888	-95.218733	
Plaza de Cobro Ixtepec	47.49	2	0	1803	1.0	63.5	1.7	4.7	4.5	7.0	4.4	11.6	1.6	64.5	1.7	33.8	0.082	0.500	16.561479	-95.134267	
T. C. Coatzacoalcos - Salina Cruz	75.39	1	0	2565	3.6	67.5	3.8	6.5	2.7	5.3	3.4	6.3	0.9	71.1	3.8	25.1	0.092	0.519	16.587179	-94.957655	
T. C. Coatzacoalcos - Salina Cruz	75.39	3	0	2858	3.0	57.4	4.7	3.5	2.1	13.2	6.4	8.9	0.8	60.4	4.7	34.9	0.067	0.524	16.582974	-94.933116	
Entronque La Ventosa	82.00																				

34 CARR: Cd. Ixtepec - Guevea de Humboldt

CLAVE: 00301

RUTA: OAX

AÑO: 2025

LUGAR	ESTACION				CLASIFICACION VEHICULAR EN PORCIENTO													COORDENADAS			
	KM	TE	SC	TDPA	M	A	B	C2	C3	T3S2	T3S3	T3S2R4	OTROS	A	B	C	K'	D	LATITUD	LONGITUD	
Ciudad Ixtepec	0.00																				
T. C. La Ventosa - Salina Cruz (Cuota)	4.00	1	1	2645	11.6	85.0	0.8	1.5	0.6	0.3	0.1	0.1	0.0	96.6	0.8	2.6	0.107	0.552	16.560335	-95.125170	
T. C. La Ventosa - Salina Cruz (Cuota)	4.00	1	2	2455	11.1	85.1	0.7	1.6	1.0	0.3	0.1	0.1	0.0	96.2	0.7	3.1	0.095	0.552	16.560265	-95.125187	
T. C. La Ventosa - Salina Cruz (Cuota)	4.00	3	0	2728	16.0	81.0	0.3	2.0	0.3	0.2	0.1	0.1	0.0	97.0	0.3	2.7	0.094	0.549	16.564268	-95.141883	
Guevea de Humboldt	57.05																				

35 CARR: El Zapote - Copalita

CLAVE: 00109

RUTA: OAX

AÑO: 2025

LUGAR	ESTACION				CLASIFICACION VEHICULAR EN PORCIENTO													COORDENADAS			
	KM	TE	SC	TDPA	M	A	B	C2	C3	T3S2	T3S3	T3S2R4	OTROS	A	B	C	K'	D	LATITUD	LONGITUD	
T. C. Santiago Pinotepa Nacional - Salina Cruz	0.00	3	1	2759	15.8	77.0	1.2	4.9	0.5	0.2	0.1	0.2	0.1	92.8	1.2	6.0	0.086	0.517	15.767824	-96.272294	
T. C. Santiago Pinotepa Nacional - Salina Cruz	0.00	3	2	3098	15.8	77.6	1.2	4.5	0.4	0.1	0.1	0.2	0.1	93.4	1.2	5.4	0.088	0.517	15.767889	-96.272373	
Copalita	43.04																				

36 CARR: Huajuapán de León - El Carrizal

CLAVE: 00109

RUTA: OAX

AÑO: 2025

LUGAR	ESTACION				CLASIFICACION VEHICULAR EN PORCIENTO													COORDENADAS		
	KM	TE	SC	TDPA	M	A	B	C2	C3	T3S2	T3S3	T3S2R4	OTROS	A	B	C	K'	D	LATITUD	LONGITUD
Huajuapán de León	0.00	3	0	2505	3.1	90.7	0.7	2.2	2.0	0.5	0.2	0.5	0.1	93.8	0.7	5.5	0.072	0.508	17.777154	-97.789757
San Miguel Tlacotepec	83.60	1	0	1482	5.3	85.7	1.2	5.3	1.4	0.6	0.3	0.2	0.0	91.0	1.2	7.8	0.092	0.603	17.461397	-98.004899

OAXACA

36 CARR: Huajuapán de León - El Carrizal

CLAVE: 00109

RUTA: OAX

AÑO: 2025

LUGAR	ESTACION				CLASIFICACION VEHICULAR EN PORCIENTO													COORDENADAS		
	KM	TE	SC	TDPA	M	A	B	C2	C3	T3S2	T3S3	T3S2R4	OTROS	A	B	C	K'	D	LATITUD	LONGITUD
Santiago Juxtlahuaca	100.00	1	0	7781	6.8	85.5	0.6	3.9	0.9	1.2	0.7	0.3	0.1	92.3	0.6	7.1	0.090	0.625	17.343667	-98.014539
Putla	130.00	1	0	665	5.8	86.1	0.9	4.9	1.2	0.6	0.4	0.0	0.1	91.9	0.9	7.2	0.083	0.564	17.154741	-97.893876
El Carrizal	131.30																			

37 CARR: Loma Bonita - Mixtán

CLAVE: 20043

RUTA: OAX

AÑO: 2025

LUGAR	ESTACION				CLASIFICACION VEHICULAR EN PORCIENTO													COORDENADAS		
	KM	TE	SC	TDPA	M	A	B	C2	C3	T3S2	T3S3	T3S2R4	OTROS	A	B	C	K'	D	LATITUD	LONGITUD
Loma Bonita	0.00																			
X. C. Cd. Alemán - Sayula	1.00	1	1	5104	19.4	66.1	1.2	8.6	1.0	1.4	1.2	0.5	0.6	85.5	1.2	13.3	0.066	0.537	18.099661	-95.877958
X. C. Cd. Alemán - Sayula	1.00	1	2	4775	19.2	66.5	1.5	8.3	0.9	1.5	1.1	0.4	0.6	85.7	1.5	12.8	0.077	0.537	18.099687	-95.877891
X. C. Cd. Alemán - Sayula	1.00	3	0	2678	26.0	60.1	1.4	9.3	1.7	0.8	0.3	0.3	0.1	86.1	1.4	12.5	0.104	0.511	18.095327	-95.876501
T. Izq. Aeropuerto	12.00	3	0	1151	30.2	61.2	0.5	6.0	1.4	0.3	0.2	0.2	0.0	91.4	0.5	8.1	0.109	0.608	18.004814	-95.868115
Mixtán	27.00																			

38 CARR: Ramal a Reforma de Pineda

CLAVE: 20010

RUTA: OAX

AÑO: 2025

LUGAR	ESTACION				CLASIFICACION VEHICULAR EN PORCIENTO													COORDENADAS		
	KM	TE	SC	TDPA	M	A	B	C2	C3	T3S2	T3S3	T3S2R4	OTROS	A	B	C	K'	D	LATITUD	LONGITUD
T. C. La Ventosa - San Pedro Tapanatepec	0.00	3	0	1602	16.9	76.1	1.1	2.0	2.6	0.8	0.3	0.2	0.0	93.0	1.1	5.9	0.082	0.515	16.492298	-94.427627
Reforma de Pineda	12.00																			

39 CARR: Ramal a Unión Hidalgo

CLAVE: 20044

RUTA: OAX

AÑO: 2025

LUGAR	ESTACION				CLASIFICACION VEHICULAR EN PORCIENTO													COORDENADAS		
	KM	TE	SC	TDPA	M	A	B	C2	C3	T3S2	T3S3	T3S2R4	OTROS	A	B	C	K'	D	LATITUD	LONGITUD
T. C. La Ventosa - San Pedro Tapanatepec	0.00	3	1	1495	18.1	78.6	0.2	1.4	0.9	0.6	0.1	0.1	0.0	96.7	0.2	3.1	0.080	0.526	16.572877	-94.816522
T. C. La Ventosa - San Pedro Tapanatepec	0.00	3	2	1469	17.8	79.0	0.2	1.2	0.9	0.7	0.1	0.1	0.0	96.8	0.2	3.0	0.082	0.526	16.572654	-94.816470
Unión Hidalgo	12.00	1	0	1770	23.2	70.3	0.3	1.4	4.3	0.3	0.1	0.1	0.0	93.5	0.3	6.2	0.080	0.690	16.489763	-94.832435

40 CARR: San Antonio - Puerto Angel

CLAVE:

RUTA: OAX

AÑO: 2025

LUGAR	ESTACION				CLASIFICACION VEHICULAR EN PORCIENTO													COORDENADAS		
	KM	TE	SC	TDPA	M	A	B	C2	C3	T3S2	T3S3	T3S2R4	OTROS	A	B	C	K'	D	LATITUD	LONGITUD
T. C. Santiago Pinotepa Nacional - Salina Cruz	0.00	3	0	2945	20.2	73.0	0.6	2.9	0.7	2.1	0.3	0.1	0.1	93.2	0.6	6.2	0.104	0.658	15.713437	-96.582112

OAXACA

40 CARR: San Antonio - Puerto Angel

CLAVE:

RUTA: OAX

AÑO: 2025

LUGAR	ESTACION				CLASIFICACION VEHICULAR EN PORCIENTO										COORDENADAS					
	KM	TE	SC	TDPA	M	A	B	C2	C3	T3S2	T3S3	T3S2R4	OTROS	A	B	C	K'	D	LATITUD	LONGITUD
Mazunte	7.30	1	0	3465	29.3	64.1	0.4	2.6	0.3	2.3	0.5	0.3	0.2	93.4	0.4	6.2	0.094	0.598	15.669503	-96.557810
Mazunte	7.30	3	0	2865	26.9	66.0	0.5	3.1	0.3	2.1	0.7	0.2	0.2	92.9	0.5	6.6	0.099	0.511	15.666981	-96.540326
Puerto Ángel	15.90																			

41 CARR: T. C. (Oaxaca - Puerto Ángel) - Puerto Escondido

CLAVE: 20009

RUTA: MEX-OAX-161

AÑO: 2025

LUGAR	ESTACION				CLASIFICACION VEHICULAR EN PORCIENTO										COORDENADAS					
	KM	TE	SC	TDPA	M	A	B	C2	C3	T3S2	T3S3	T3S2R4	OTROS	A	B	C	K'	D	LATITUD	LONGITUD
T. C. Oaxaca - Puerto Ángel	0.00	3	1	8899	12.2	82.4	0.5	3.2	0.9	0.4	0.2	0.1	0.1	94.6	0.5	4.9	0.122	0.641	16.920410	-96.712487
T. C. Oaxaca - Puerto Ángel	0.00	3	2	9451	12.4	82.3	0.5	3.0	0.8	0.4	0.2	0.2	0.2	94.7	0.5	4.8	0.107	0.641	16.920082	-96.712659
T. Izq. San Pablo Huixtepec	16.80	1	0	11848	13.2	80.6	0.9	3.4	1.1	0.4	0.1	0.2	0.1	93.8	0.9	5.3	0.068	0.519	16.841044	-96.788236
T. Izq. San Pablo Huixtepec	16.80	3	0	10174	13.4	81.9	0.9	2.2	1.0	0.5	0.1	0.0	0.0	95.3	0.9	3.8	0.070	0.515	16.827409	-96.788961
T. Der. El Trapiche	30.00	1	0	4404	6.0	84.8	1.4	4.3	2.2	0.5	0.4	0.4	0.0	90.8	1.4	7.8	0.077	0.537	16.761260	-96.856034
T. Der. El Trapiche	30.00	3	0	3134	12.5	82.8	0.6	2.4	1.1	0.3	0.2	0.1	0.0	95.3	0.6	4.1	0.082	0.512	16.760334	-96.859186
T. Der. Cofradía San Pedro	53.00	3	0	1188	6.6	85.9	1.0	3.6	2.2	0.4	0.2	0.1	0.0	92.5	1.0	6.5	0.082	0.541	16.598569	-96.889855
Sola de Vega	78.40	3	0	1238	26.8	69.6	0.4	1.6	1.1	0.3	0.1	0.1	0.0	96.4	0.4	3.2	0.090	0.622	16.509190	-96.984082
T. Der. Yalotepec	134.50	1	0	1900	22.0	73.3	0.6	2.0	1.4	0.4	0.1	0.2	0.0	95.3	0.6	4.1	0.077	0.531	16.348187	-97.094676
San Gabriel Mixtepec	208.00	1	0	1960	21.6	75.7	0.2	1.5	0.5	0.2	0.1	0.2	0.0	97.3	0.2	2.5	0.102	0.500	16.094739	-97.071471
Puerto Escondido	248.00	1	0	7787	16.2	77.5	0.8	1.9	1.6	0.8	0.5	0.5	0.2	93.7	0.8	5.5	0.079	0.608	15.892867	-97.077006

42 CARR: Tehuacán - Huitzo

CLAVE: 00211

RUTA: PUE-MEX-135

AÑO: 2025

LUGAR	ESTACION				CLASIFICACION VEHICULAR EN PORCIENTO										COORDENADAS					
	KM	TE	SC	TDPA	M	A	B	C2	C3	T3S2	T3S3	T3S2R4	OTROS	A	B	C	K'	D	LATITUD	LONGITUD
Tehuacán	0.00	3	0	11173	10.5	84.6	0.3	3.8	0.5	0.2	0.1	0.0	0.0	95.1	0.3	4.6	0.071	0.540	18.457432	-97.370656
T. Der. San Gabriel Chilac	14.40	1	0	8466	16.2	75.2	0.5	4.2	1.2	1.1	0.5	0.7	0.4	91.4	0.5	8.1	0.087	0.542	18.407071	-97.330419
San Sebastián Zinacatepec	23.00	3	0	7492	8.2	81.2	1.0	4.5	1.9	1.4	1.0	0.5	0.3	89.4	1.0	9.6	0.072	0.519	18.321346	-97.226146
Lim. Edos. Term. Pue. Ppia. Oax.	60.90																			
Teotitlán del Camino	63.15	3	0	2757	11.3	81.9	0.5	4.4	0.7	0.9	0.1	0.1	0.1	93.2	0.5	6.3	0.070	0.508	18.118774	-97.073664
Santa María Tecomavaca	88.34	1	0	1377	15.6	77.2	0.5	3.7	1.3	1.2	0.2	0.2	0.1	92.8	0.5	6.7	0.092	0.559	17.955493	-97.025467
Santa María Tecomavaca	88.34	3	0	1122	10.0	83.6	0.4	4.2	0.9	0.5	0.2	0.1	0.1	93.6	0.4	6.0	0.092	0.544	17.949504	-97.022239
T. Izq. Cuicatlán	118.80	1	0	1552	20.4	72.2	0.6	5.2	0.9	0.4	0.1	0.2	0.0	92.6	0.6	6.8	0.097	0.510	17.793930	-96.959977
T. Izq. Nacaltepec	169.84	1	0	718	9.3	79.5	0.9	6.0	1.2	1.9	0.6	0.6	0.0	88.8	0.9	10.3	0.091	0.631	17.505594	-96.933158
T. C. Huajuapán de León - Oaxaca	202.70	1	0	10595	16.0	79.1	0.5	2.5	0.7	0.5	0.3	0.3	0.1	95.1	0.5	4.4	0.076	0.525	17.287659	-96.903729

OAXACA

43 CARR: Teotitlán de Flores Magón - Tuxtepec

CLAVE: 00108

RUTA: OAX-PUE-MEX-182

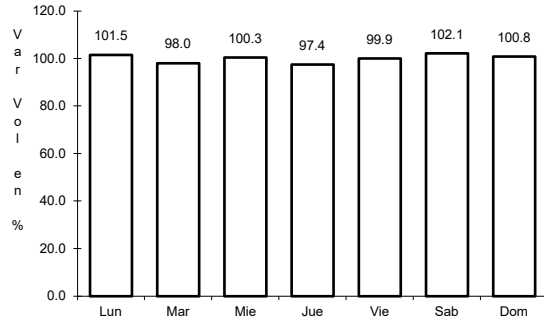
AÑO: 2025

LUGAR	ESTACION				CLASIFICACION VEHICULAR EN PORCIENTO										COORDENADAS					
	KM	TE	SC	TDPA	M	A	B	C2	C3	T3S2	T3S3	T3S2R4	OTROS	A	B	C	K'	D	LATITUD	LONGITUD
Teotitlán del Camino	0.00	3	0	1973	21.9	68.6	1.2	3.6	3.2	0.8	0.2	0.4	0.1	90.5	1.2	8.3	0.092	0.519	18.131729	-97.063860
Lim. Edos. Term. Oax. Ppia. Pue.	2.00																			
Lim. Edos. Term. Pue. Ppia. Oax.	10.00																			
Huautla	65.00	1	0	1664	3.6	86.9	1.0	6.9	0.6	0.4	0.3	0.2	0.1	90.5	1.0	8.5	0.091	0.559	18.146106	-96.853951
San Felipe Jalapa de Díaz	140.00	3	0	4998	4.7	84.8	1.2	5.4	1.5	1.2	0.6	0.5	0.1	89.5	1.2	9.3	0.079	0.511	18.082051	-96.522140
Tuxtepec	185.00	1	0	6764	31.2	54.1	1.7	8.1	1.4	1.6	0.9	0.8	0.2	85.3	1.7	13.0	0.069	0.505	18.089716	-96.171486

1 CARR: Acceso al Puerto Salina Cruz

CLAVE:

ruta: MEX-090



Km: 0.00

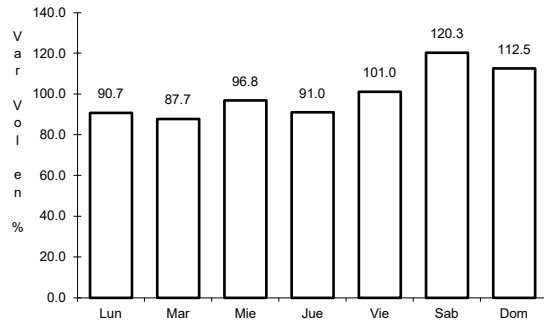
Tipo: 3

Sent: 0

2 CARR: Buenavista - Tuxtepec

CLAVE: 00624

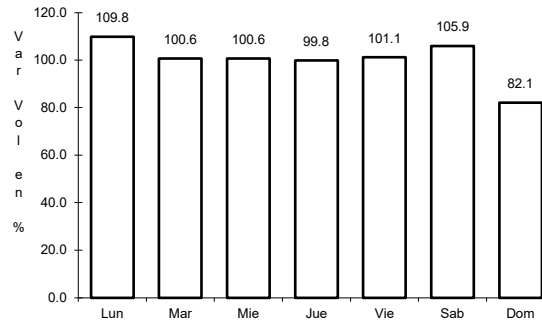
ruta: MEX-175



Km: 0.00

Tipo: 3

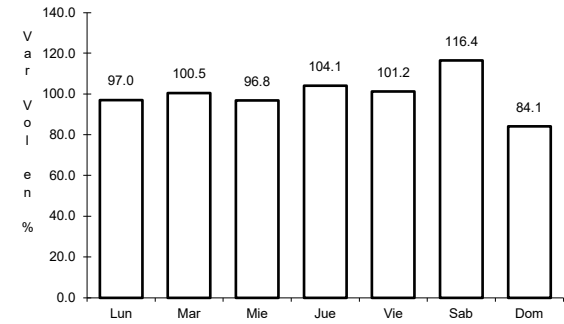
Sent: 0



Km: 121.25

Tipo: 1

Sent: 1



Km: 121.25

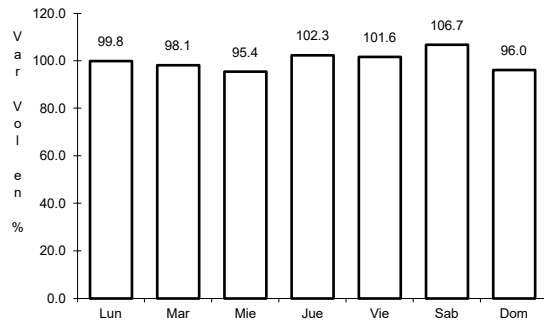
Tipo: 1

Sent: 2

3 CARR: Cd. Alemán - Sayula

CLAVE: 00301

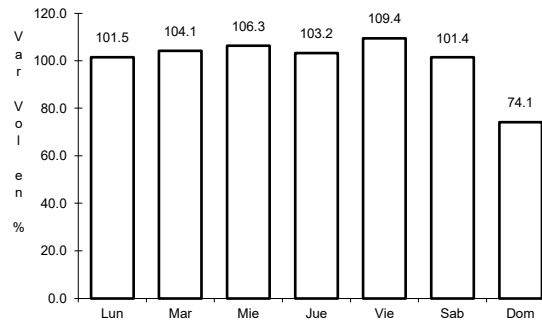
ruta: MEX-145



Km: 0.00

Tipo: 3

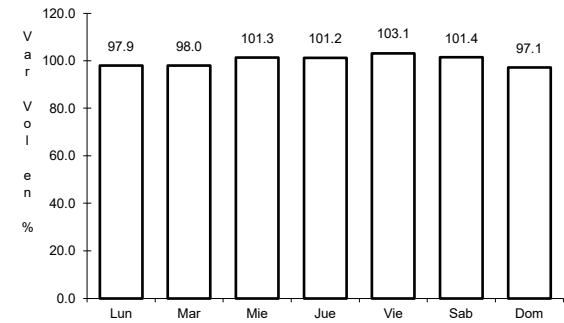
Sent: 0



Km: 71.40

Tipo: 1

Sent: 0



Km: 136.40

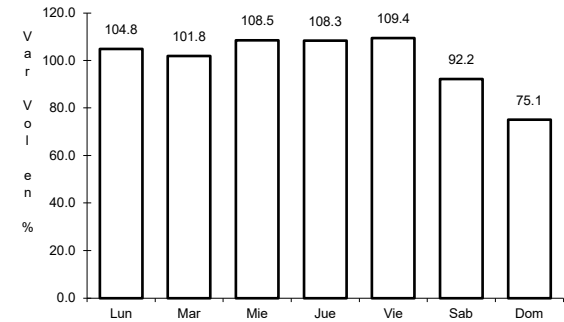
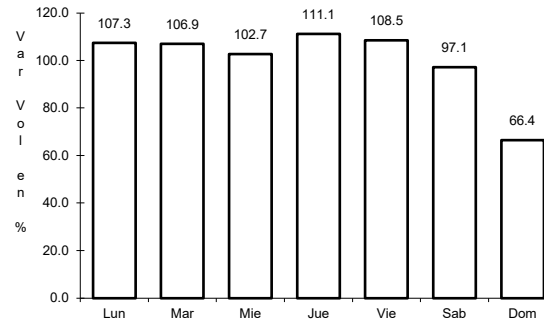
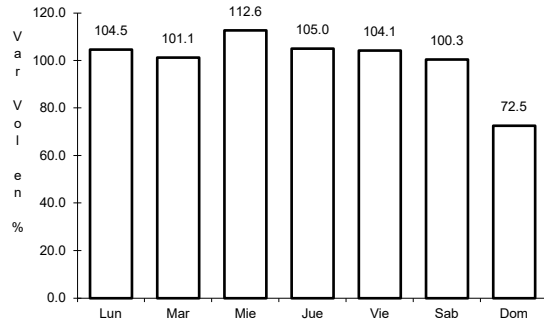
Tipo: 1

Sent: 0

4 CARR: Coatzacoalcos - Salina Cruz

CLAVE: 00147

ruta: MEX-185



Km: 0.00 Tipo: 3 Sent: 1

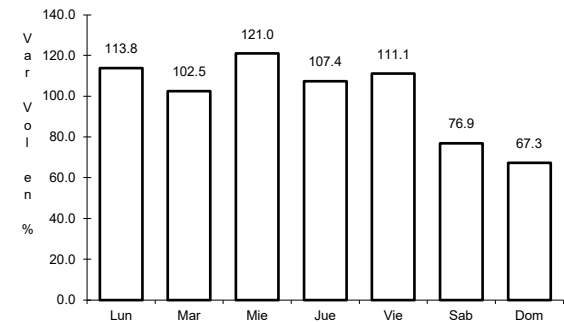
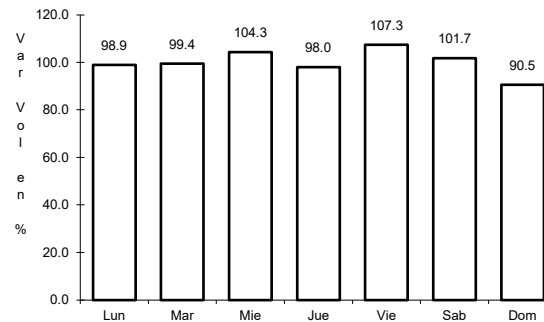
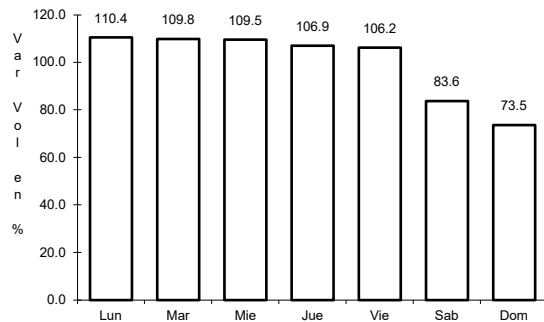
Km: 0.00 Tipo: 3 Sent: 2

Km: 255.55 Tipo: 1 Sent: 0

5 CARR: Ent. La Ventosa - San Pedro Tapanatepec

CLAVE: 20059

ruta: MEX-190



Km: 0.00 Tipo: 3 Sent: 0

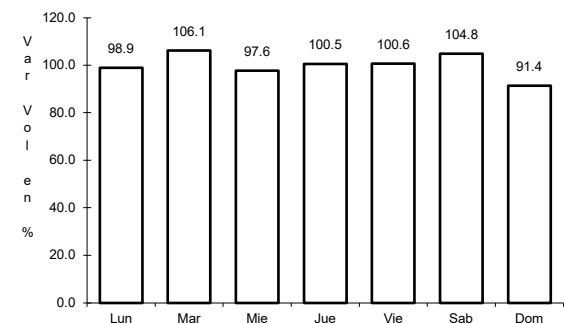
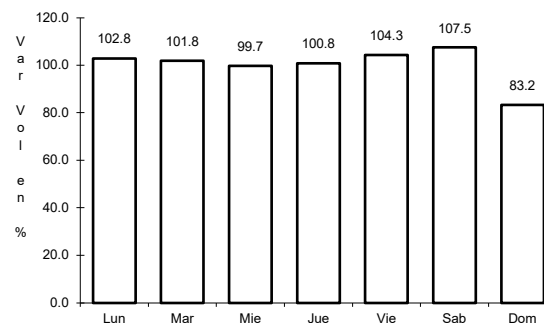
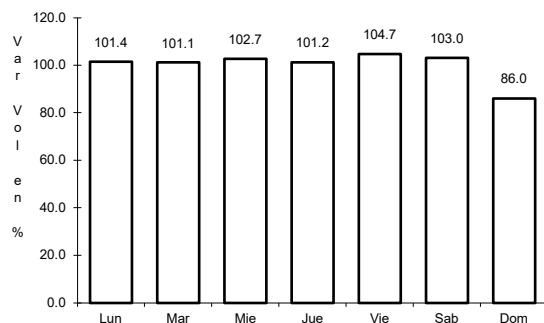
Km: 38.01 Tipo: 3 Sent: 0

Km: 91.80 Tipo: 1 Sent: 0

6 CARR: Huajuapán de León - Oaxaca

CLAVE: 20056

ruta: MEX-190



Km: 1.35 Tipo: 1 Sent: 0

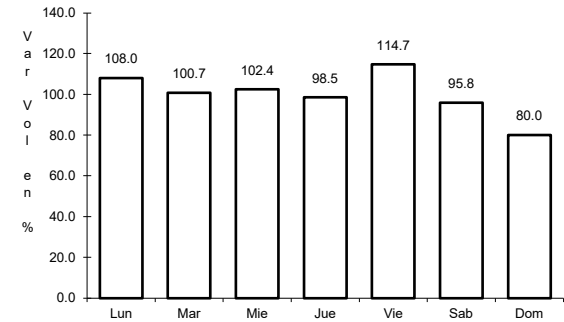
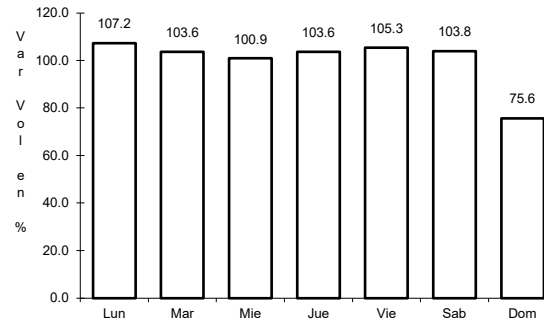
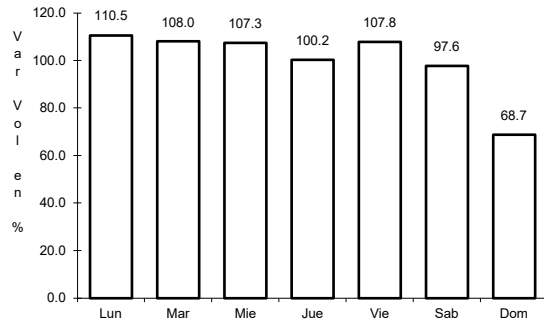
Km: 190.60 Tipo: 1 Sent: 1

Km: 190.60 Tipo: 1 Sent: 2

7 CARR: Juchitán - Ixtepec

CLAVE: 20359

ruta: MEX-185



Km: 0.15 Tipo: 3 Sent: 1

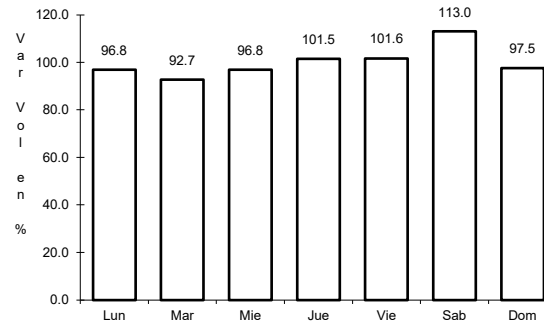
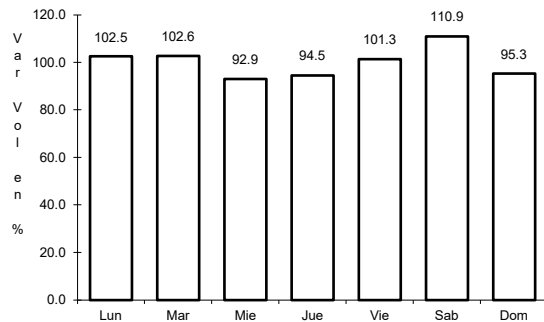
Km: 0.15 Tipo: 3 Sent: 2

Km: 16.00 Tipo: 1 Sent: 1

8 CARR: La Granja - Temascal

CLAVE: 00275

ruta: MEX-145



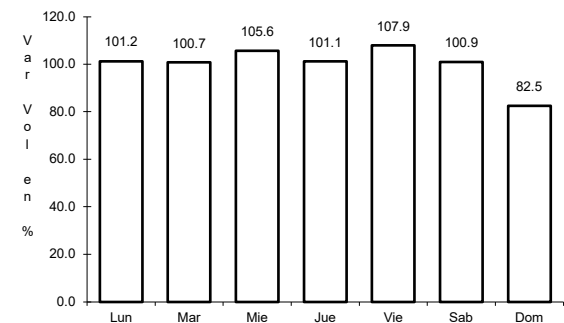
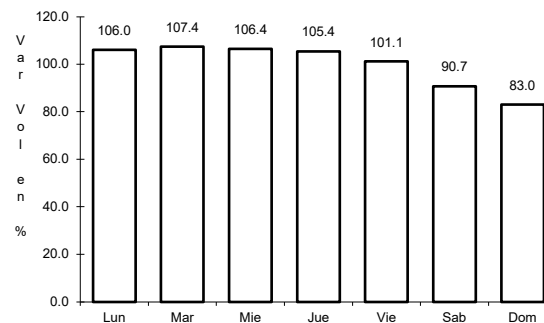
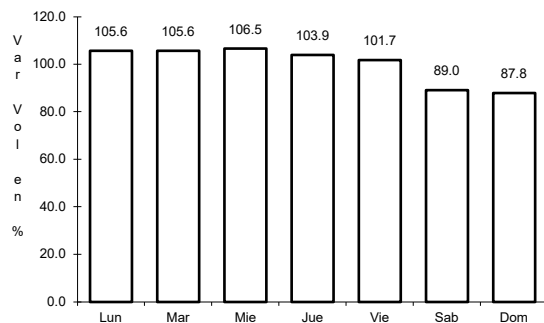
Km: 0.00 Tipo: 3 Sent: 0

Km: 23.00 Tipo: 1 Sent: 0

9 CARR: Las Cruces - Pinotepa Nacional

CLAVE: 00073

ruta: MEX-200



Km: 0.00 Tipo: 3 Sent: 1

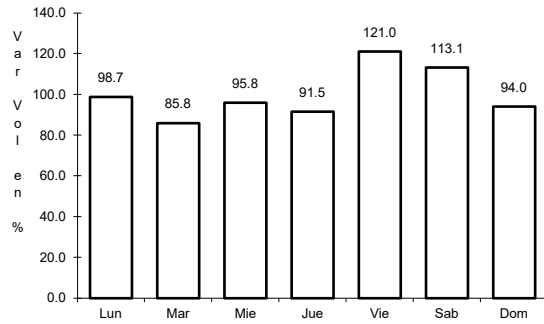
Km: 0.00 Tipo: 3 Sent: 2

Km: 245.47 Tipo: 3 Sent: 0

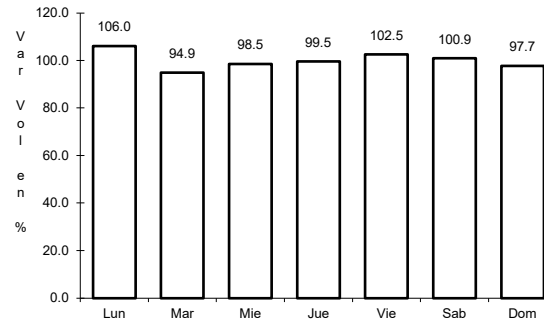
10 CARR: Libramiento de Ejutla

CLAVE:

RUTA: MEX-175



Km: 0.00 Tipo: 3 Sent: 0

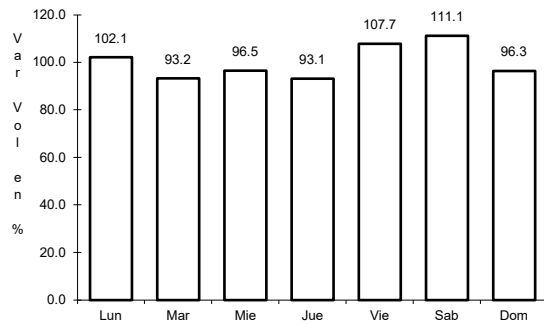


Km: 5.70 Tipo: 3 Sent: 0

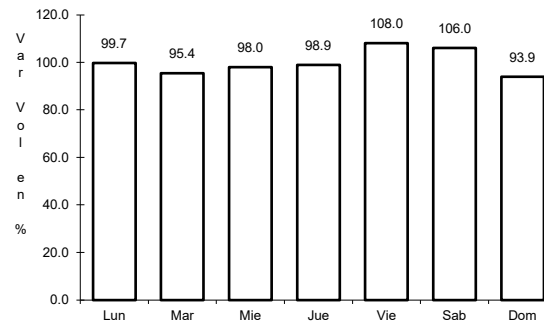
11 CARR: Libramiento de Ocotlán Oax.

CLAVE:

RUTA: MEX-175



Km: 0.00 Tipo: 3 Sent: 0

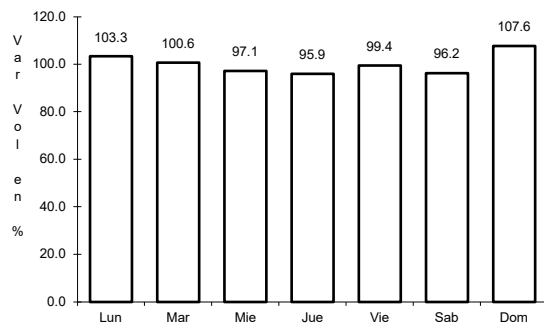


Km: 9.60 Tipo: 3 Sent: 0

12 CARR: Libramiento de Palomares

CLAVE:

RUTA: MEX-185

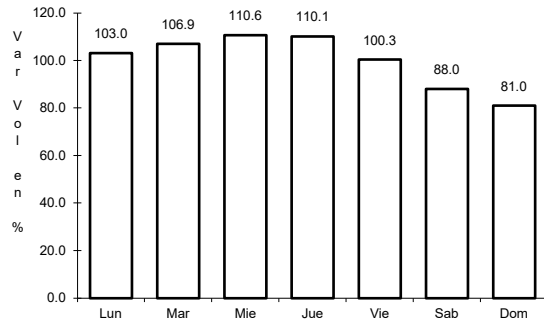


Km: 167.00 Tipo: 1 Sent: 0

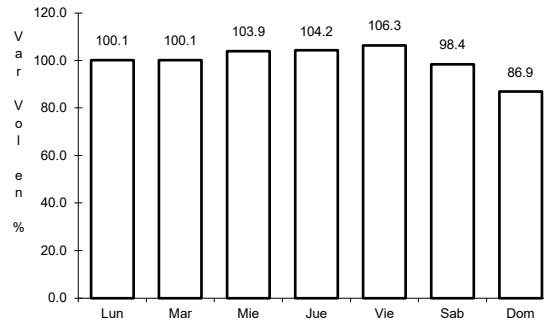
13 CARR: Libramiento de Pochutla

CLAVE:

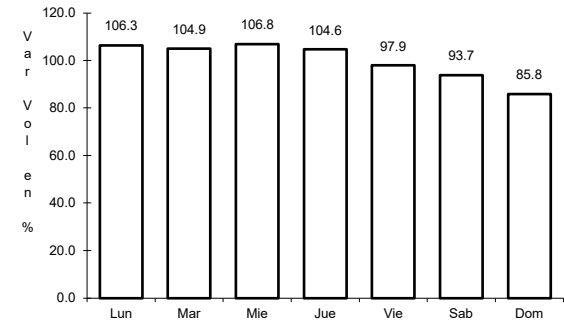
ruta: MEX-200



Km: 0.00 Tipo: 3 Sent: 0



Km: 2.40 Tipo: 1 Sent: 0

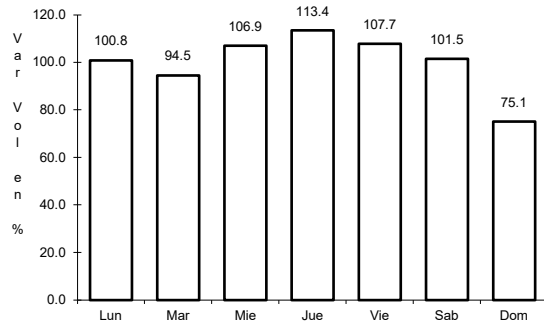


Km: 5.20 Tipo: 1 Sent: 0

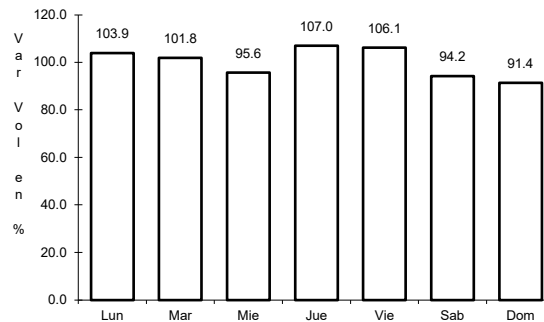
14 CARR: Libramiento de San Pedro Tapanatepec

CLAVE:

ruta: MEX-200



Km: 3.35 Tipo: 1 Sent: 0

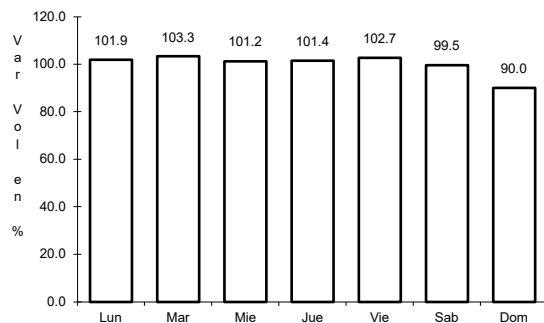


Km: 5.80 Tipo: 1 Sent: 0

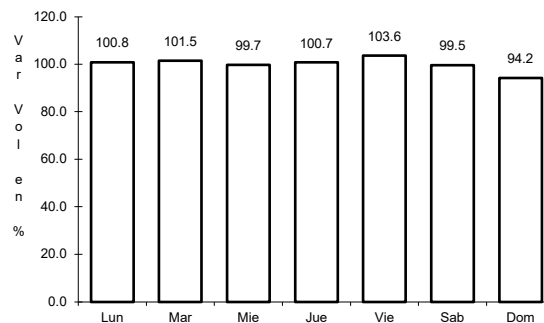
15 CARR: Libramiento de Santa María del Tule

CLAVE:

ruta: MEX-190



Km: 0.00 Tipo: 3 Sent: 0

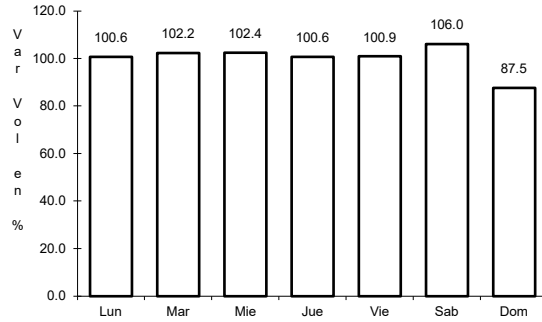


Km: 5.80 Tipo: 1 Sent: 0

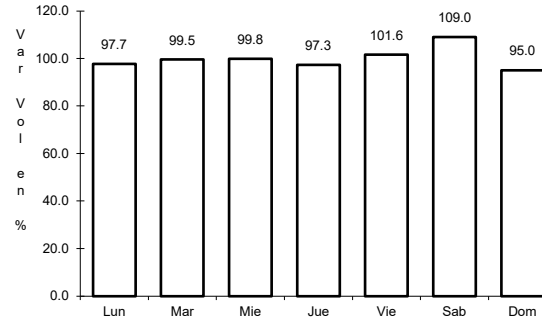
16 CARR: Oaxaca - Puerto Ángel

CLAVE: 20091

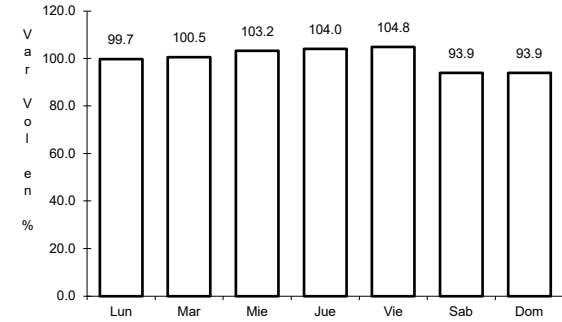
ruta: MEX-175



Km: 0.00 Tipo: 3 Sent: 1



Km: 0.00 Tipo: 3 Sent: 2

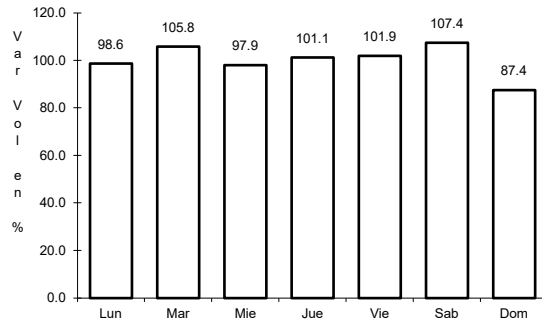


Km: 245.40 Tipo: 1 Sent: 0

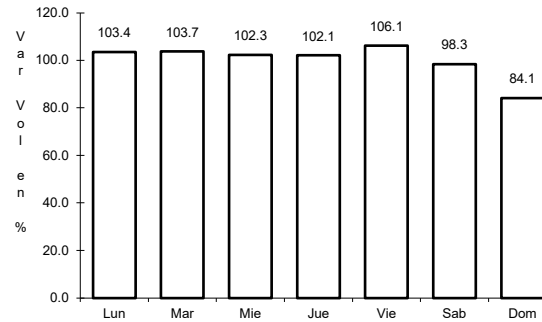
17 CARR: Oaxaca - Tehuantepec

CLAVE: 20057

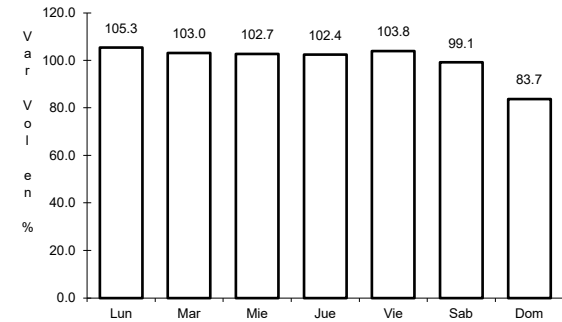
ruta: MEX-190



Km: 0.00 Tipo: 3 Sent: 1



Km: 0.00 Tipo: 3 Sent: 2

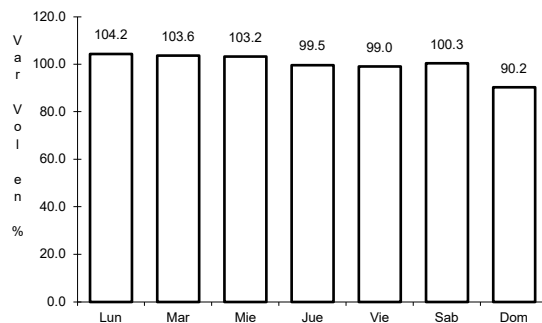


Km: 250.60 Tipo: 1 Sent: 0

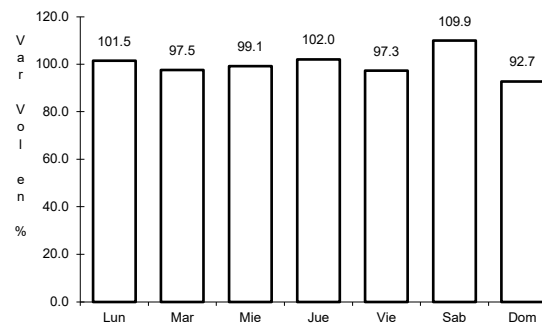
18 CARR: Puebla - Huajuapán de León

CLAVE: 00049

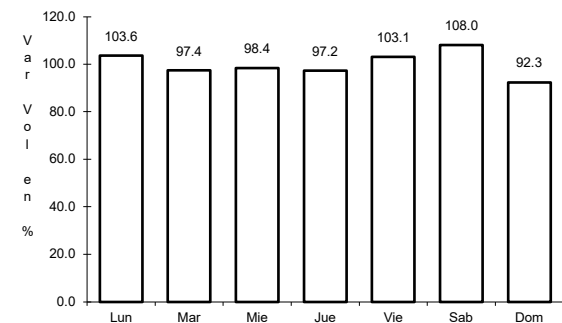
ruta: MEX-190



Km: 0.00 Tipo: 3 Sent: 1



Km: 0.00 Tipo: 3 Sent: 2

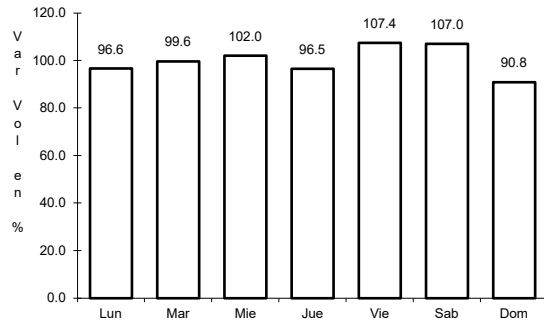


Km: 219.30 Tipo: 1 Sent: 0

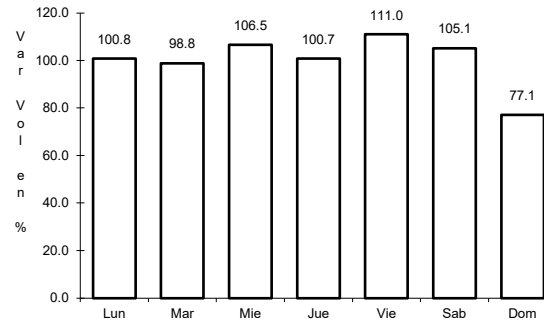
19 CARR: Ramal a Asunción Ixtaltepec

CLAVE: 20624

RUTA: MEX-185



Km: 0.00 Tipo: 3 Sent: 0

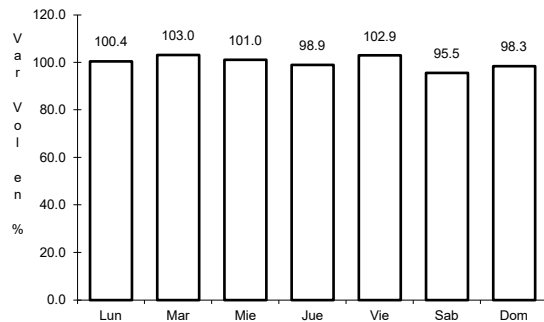


Km: 9.70 Tipo: 1 Sent: 0

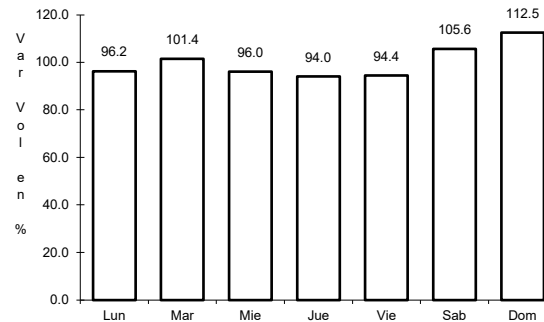
20 CARR: Ramal a Monte Albán

CLAVE:

RUTA: MEX-190



Km: 1.80 Tipo: 3 Sent: 0

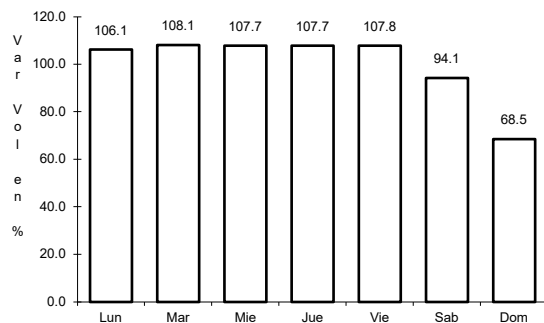


Km: 2.75 Tipo: 3 Sent: 0

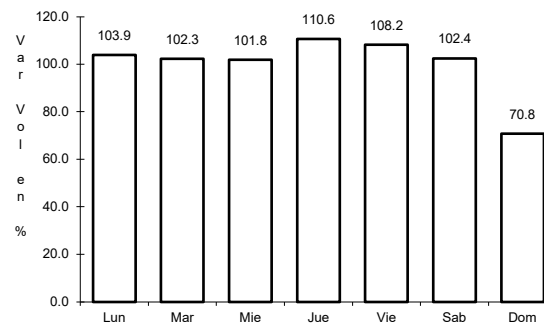
21 CARR: Ramal a Refinería Pemex (Refinería del Pacifico)

CLAVE:

RUTA: MEX



Km: 0.00 Tipo: 3 Sent: 1

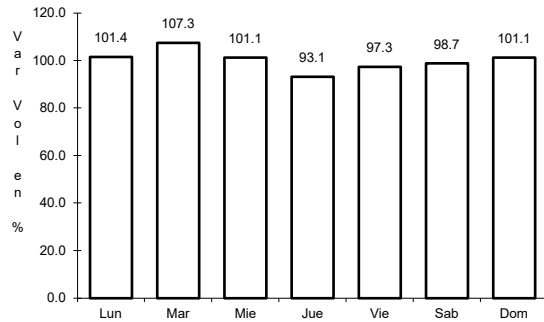


Km: 0.00 Tipo: 3 Sent: 2

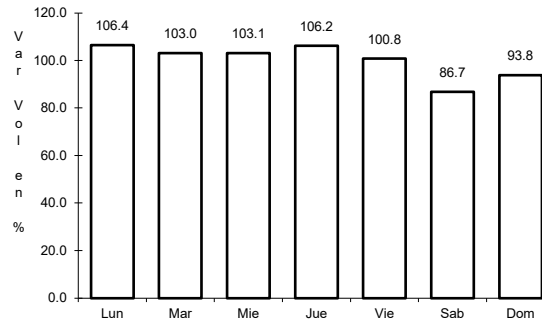
22 CARR: San Pablo Villa de Mitla - T. C. (Tuxtpec - Palomares)

CLAVE: 00106

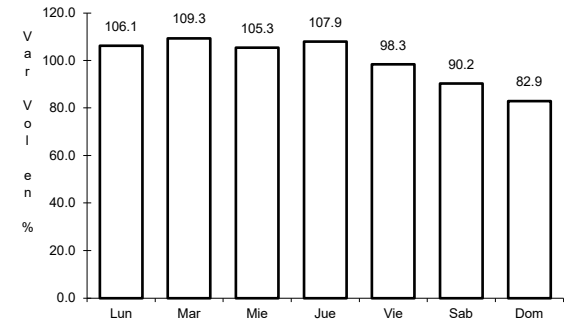
RUTA: MEX-179



Km: 0.00 Tipo: 3 Sent: 0



Km: 90.00 Tipo: 1 Sent: 0

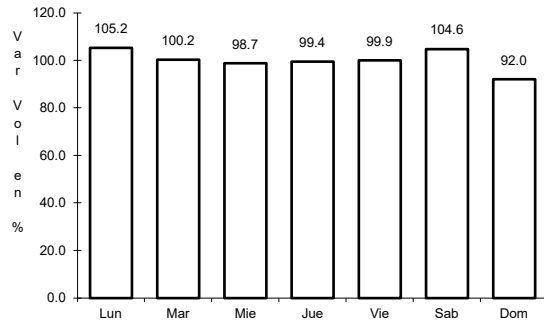


Km: 238.70 Tipo: 1 Sent: 0

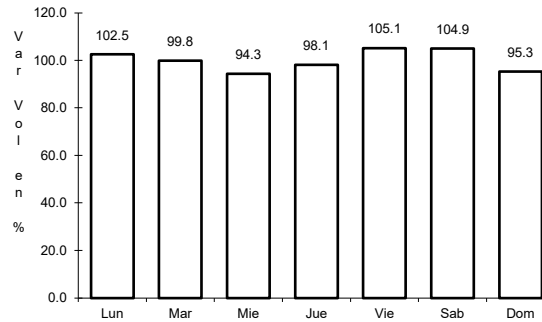
23 CARR: Santiago Pinotepa Nacional - Salina Cruz

CLAVE: 20074

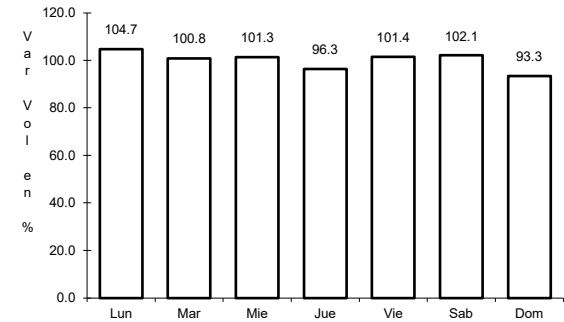
RUTA: MEX-200



Km: 0.00 Tipo: 3 Sent: 0



Km: 209.15 Tipo: 1 Sent: 1

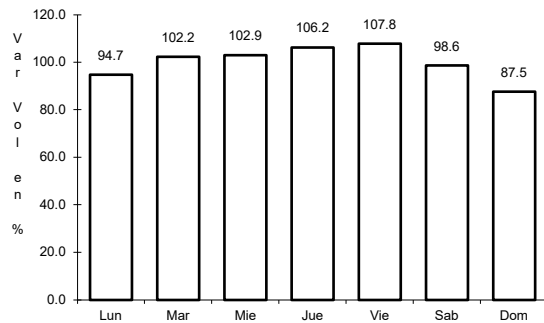


Km: 380.00 Tipo: 3 Sent: 0

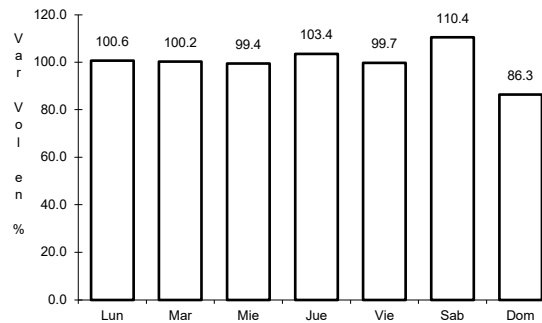
24 CARR: Tapanatepec - Talismán

CLAVE: 00075

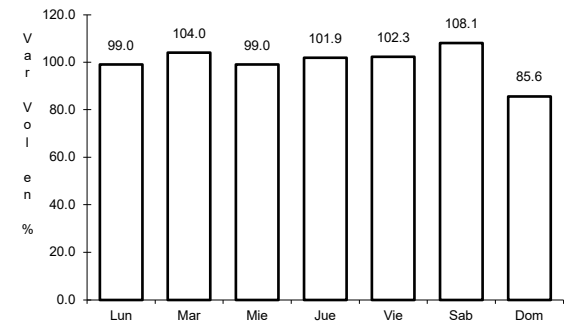
RUTA: MEX-200



Km: 0.00 Tipo: 3 Sent: 0



Km: 45.00 Tipo: 1 Sent: 0

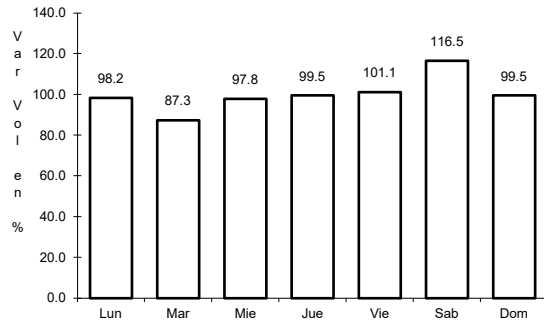


Km: 310.77 Tipo: 1 Sent: 0

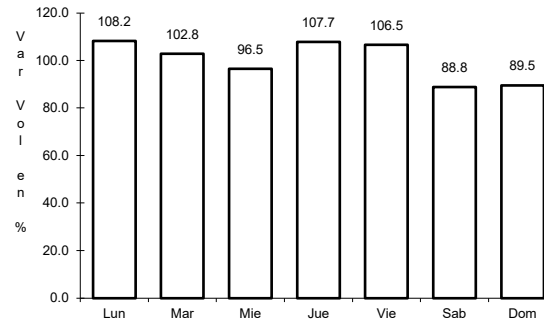
25 CARR: Tapanatepec - Tuxtla Gutiérrez

CLAVE: 00060

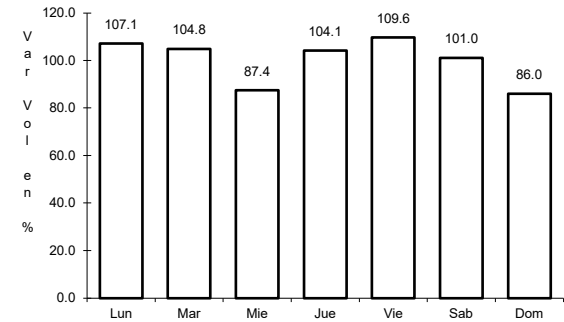
ruta: MEX-190



Km: 0.00 Tipo: 3 Sent: 0



Km: 159.00 Tipo: 1 Sent: 1

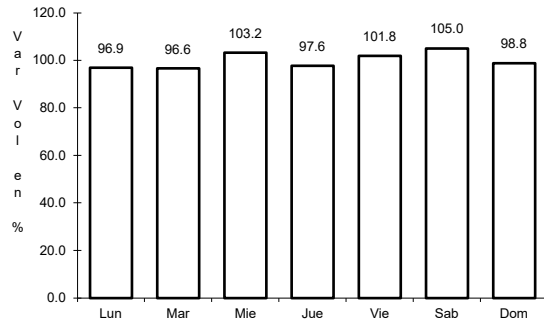


Km: 159.00 Tipo: 1 Sent: 2

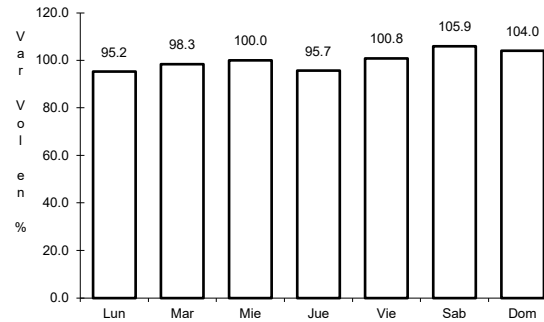
26 CARR: Tehuacán - Huajuapán de León

CLAVE: 00211

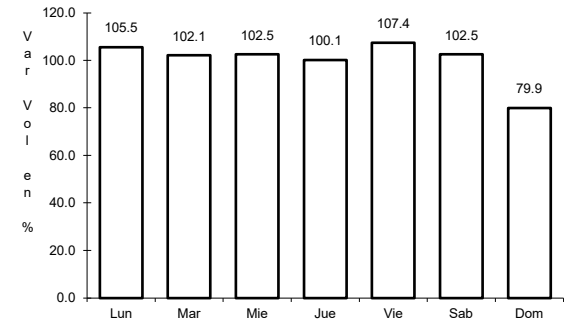
ruta: MEX-125



Km: 0.00 Tipo: 3 Sent: 1



Km: 0.00 Tipo: 3 Sent: 2

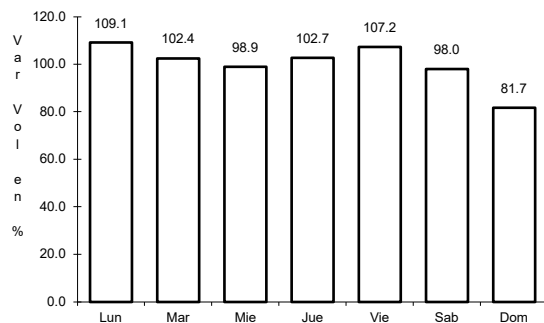


Km: 119.40 Tipo: 1 Sent: 0

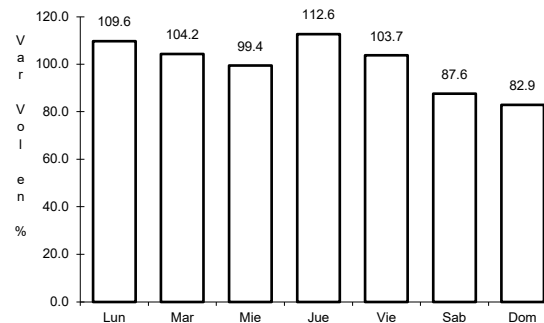
27 CARR: Tuxtepec - Ent. Palomares

CLAVE: 00180

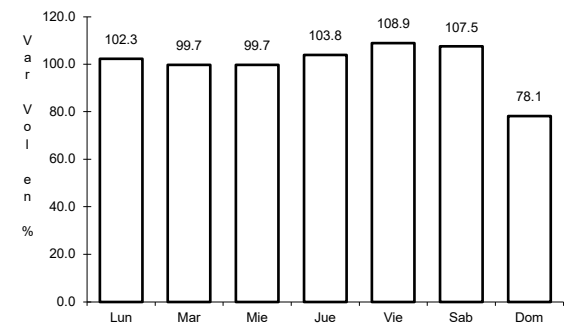
ruta: MEX-147



Km: 0.00 Tipo: 3 Sent: 0



Km: 81.20 Tipo: 1 Sent: 0

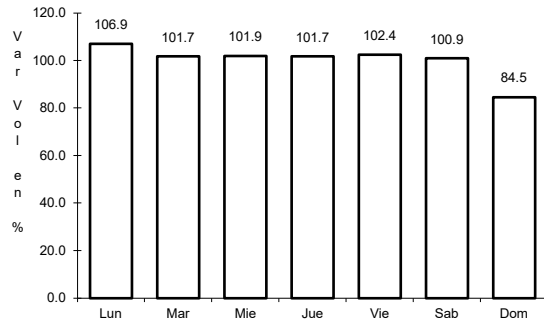


Km: 175.00 Tipo: 1 Sent: 0

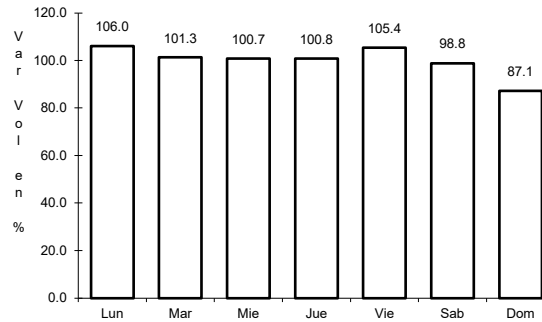
28 CARR: Tuxtepec - T. C. (Oaxaca - Tehuantepec)

CLAVE: 20090

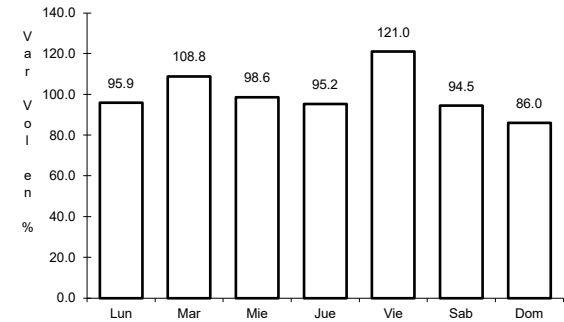
RUTA: MEX-175



Km: 0.00 Tipo: 3 Sent: 1



Km: 0.00 Tipo: 3 Sent: 2

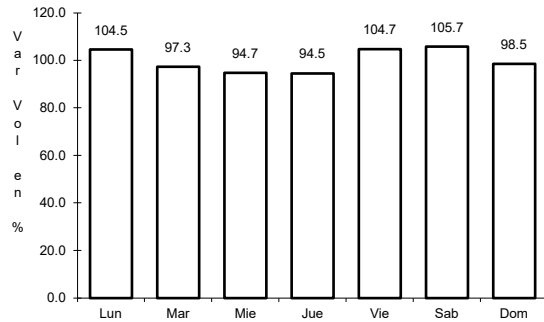


Km: 125.00 Tipo: 3 Sent: 0

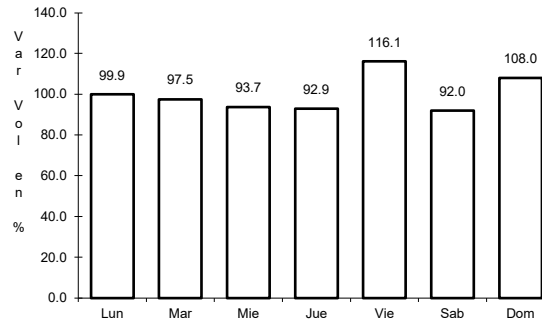
29 CARR: Yucudaa - Santiago Pinotepa Nacional

CLAVE: 20030

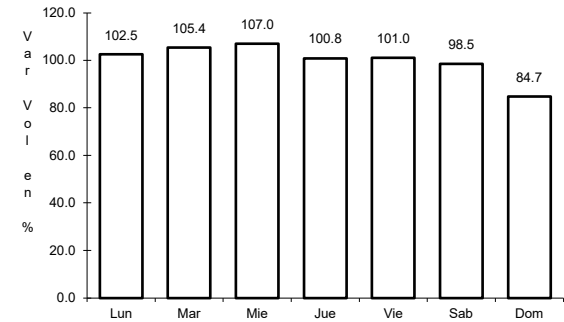
RUTA: MEX-125



Km: 0.00 Tipo: 3 Sent: 0



Km: 104.00 Tipo: 1 Sent: 0

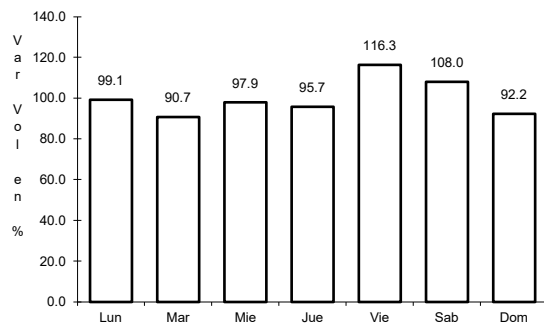


Km: 268.00 Tipo: 1 Sent: 0

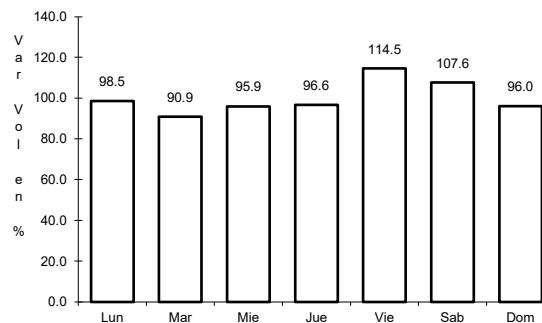
30 CARR: Barranca Larga - Ventanilla (Cuota)

CLAVE:

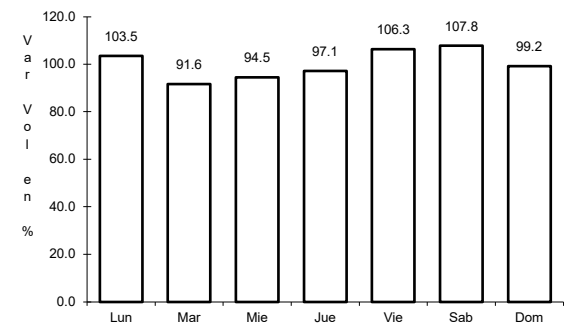
RUTA: MEX-175D



Km: 0.00 Tipo: 3 Sent: 0



Km: 56.62 Tipo: 1 Sent: 0

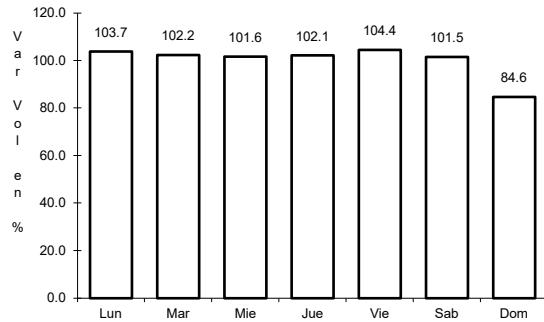


Km: 104.30 Tipo: 1 Sent: 0

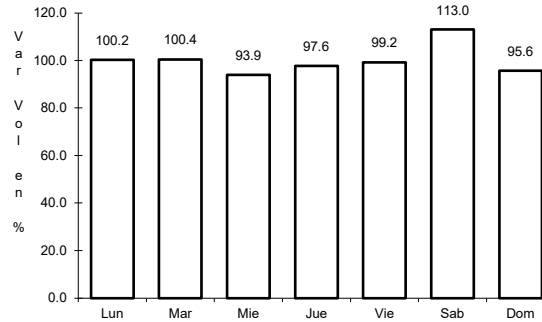
31 CARR: Cuacnopalan - Oaxaca (Cuota)

CLAVE: 00109

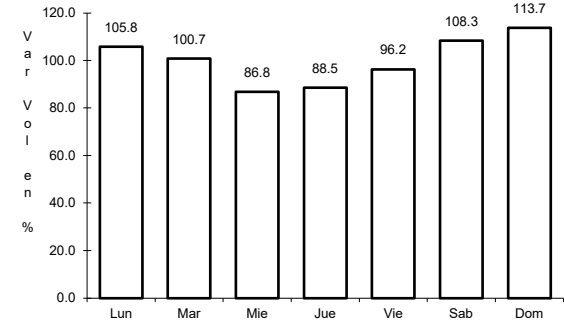
ruta: MEX-135D



Km: 0.00 Tipo: 3 Sent: 0



Km: 242.70 Tipo: 1 Sent: 1

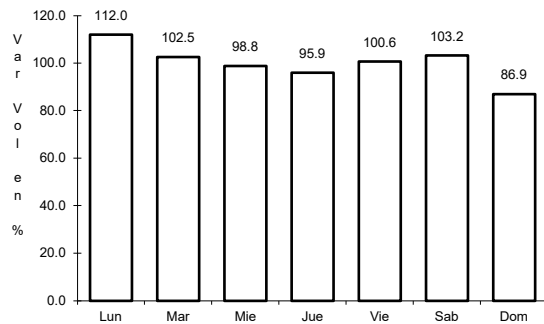


Km: 242.70 Tipo: 1 Sent: 2

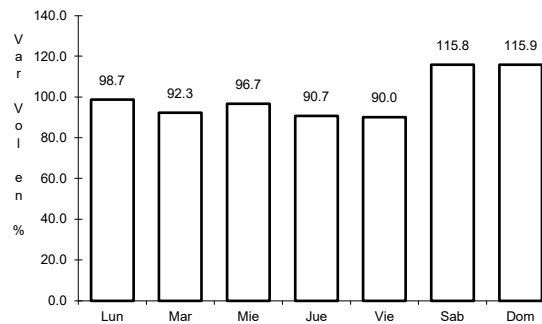
32 CARR: Mitla - Tehuantepec (Cuota)

CLAVE:

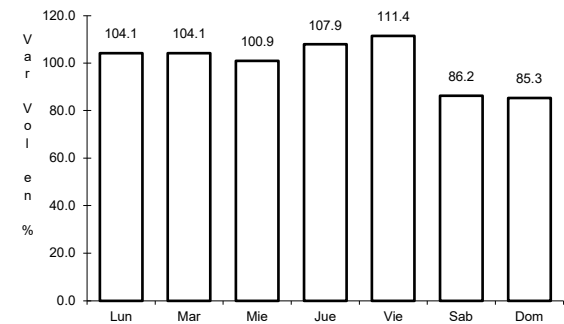
ruta: MEX-190D



Km: 0.00 Tipo: 3 Sent: 0



Km: 7.90 Tipo: 3 Sent: 0

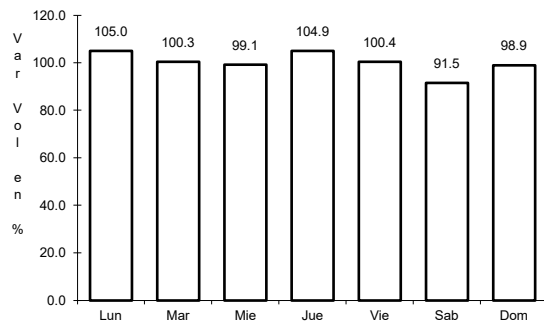


Km: 28.00 Tipo: 1 Sent: 0

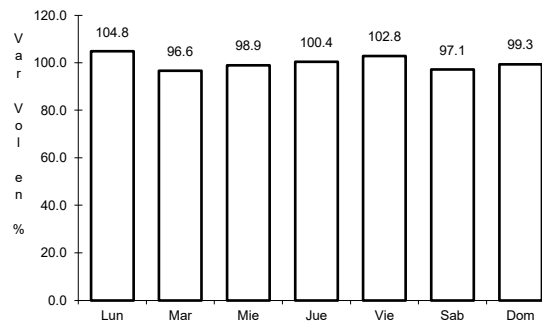
33 CARR: Salina Cruz - La Ventosa (Cuota)

CLAVE: 00275

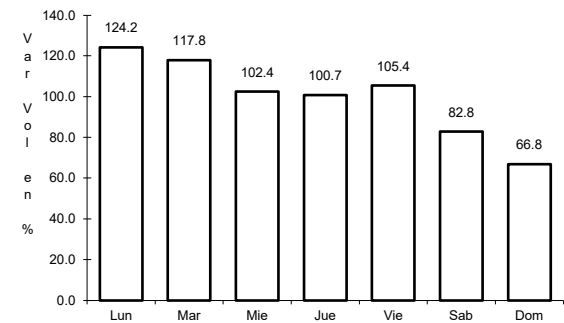
ruta: MEX-185D



Km: 23.19 Tipo: 1 Sent: 0



Km: 33.30 Tipo: 3 Sent: 0

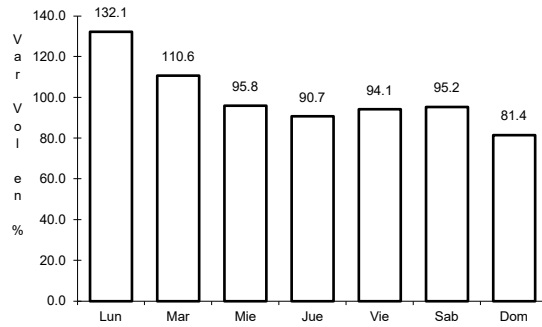


Km: 75.39 Tipo: 1 Sent: 0

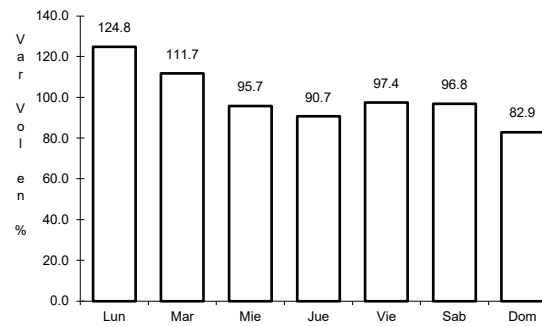
34 CARR: Cd. Ixtepec - Guevea de Humboldt

CLAVE: 00301

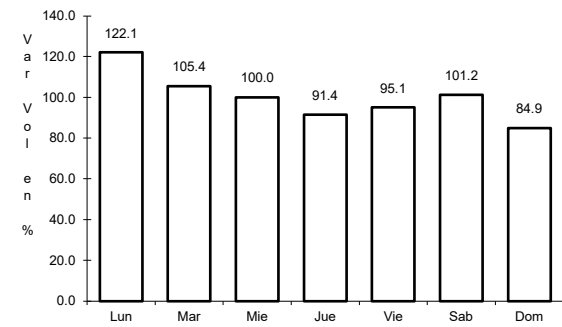
ruta: OAX



Km: 4.00 Tipo: 1 Sent: 1



Km: 4.00 Tipo: 1 Sent: 2

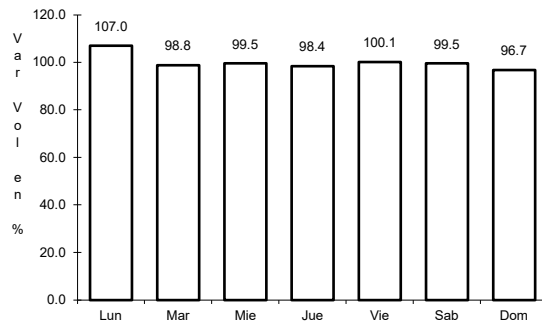


Km: 4.00 Tipo: 3 Sent: 0

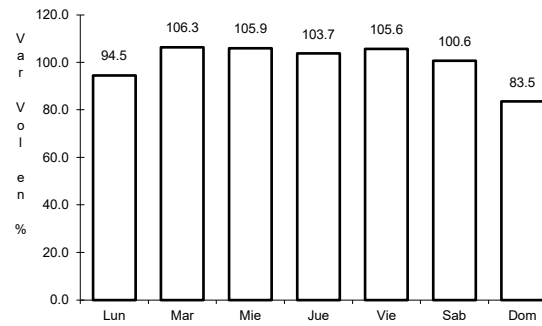
35 CARR: El Zapote - Copalita

CLAVE: 00109

ruta: OAX



Km: 0.00 Tipo: 3 Sent: 1

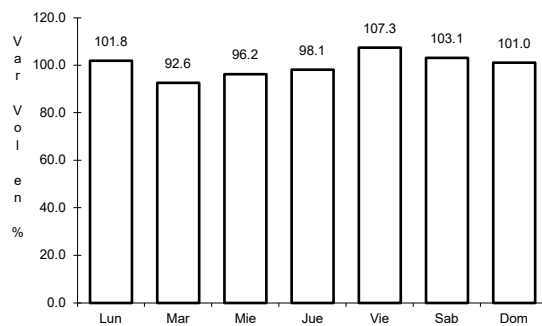


Km: 0.00 Tipo: 3 Sent: 2

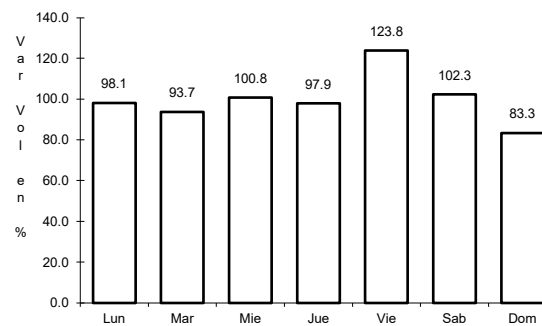
36 CARR: Huajuapán de León - El Carrizal

CLAVE: 00109

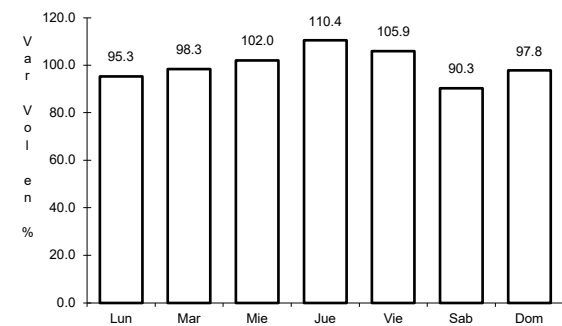
ruta: OAX



Km: 0.00 Tipo: 3 Sent: 0



Km: 83.60 Tipo: 1 Sent: 0

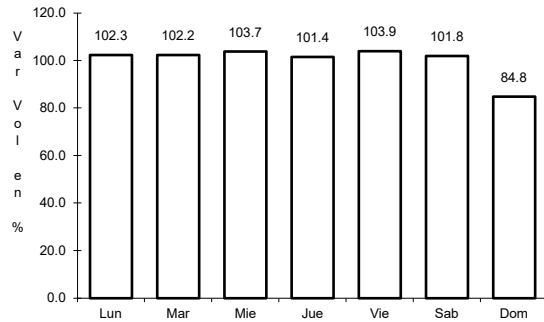


Km: 130.00 Tipo: 1 Sent: 0

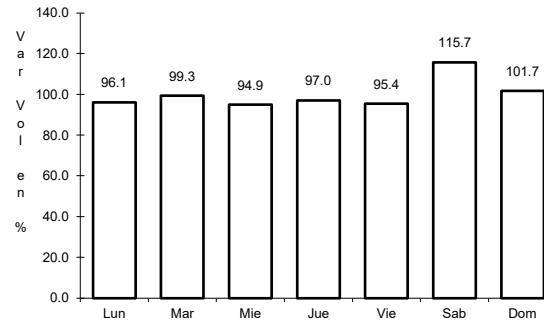
37 CARR: Loma Bonita - Mixtán

CLAVE: 20043

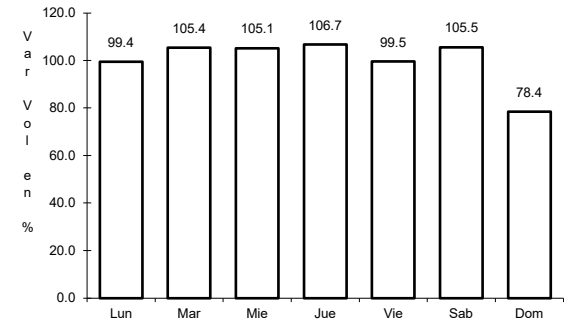
ruta: OAX



Km: 1.00 Tipo: 1 Sent: 1



Km: 1.00 Tipo: 1 Sent: 2

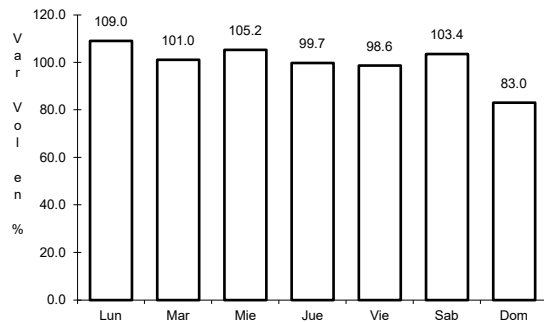


Km: 12.00 Tipo: 3 Sent: 0

38 CARR: Ramal a Reforma de Pineda

CLAVE: 20010

ruta: OAX

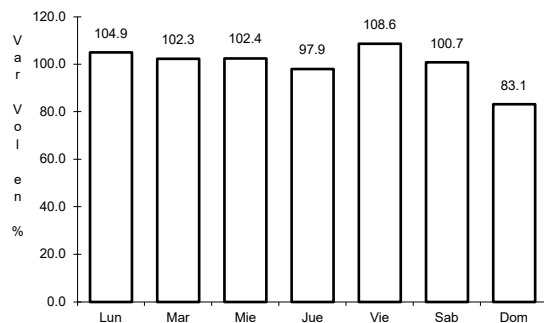


Km: 0.00 Tipo: 3 Sent: 0

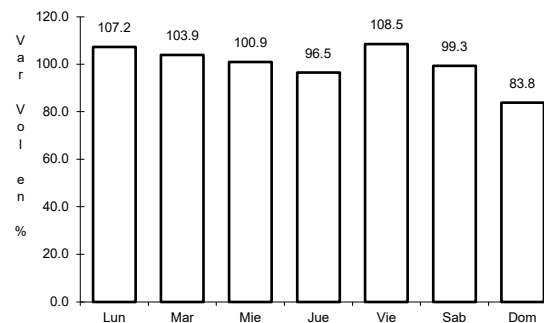
39 CARR: Ramal a Unión Hidalgo

CLAVE: 20044

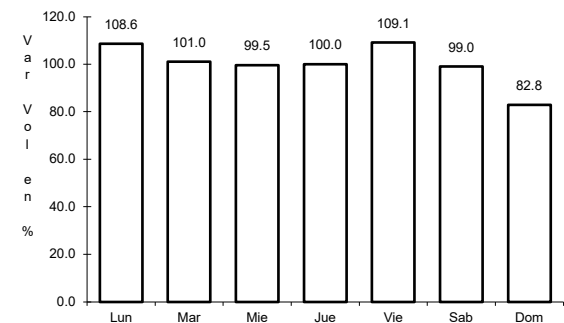
ruta: OAX



Km: 0.00 Tipo: 3 Sent: 1



Km: 0.00 Tipo: 3 Sent: 2

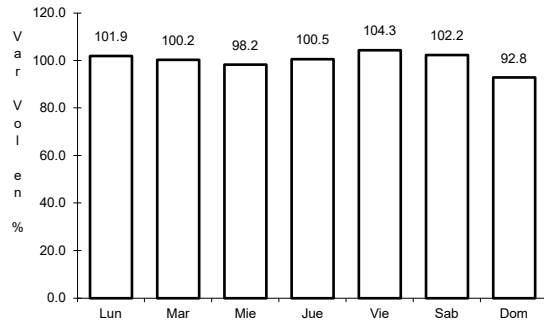


Km: 12.00 Tipo: 1 Sent: 0

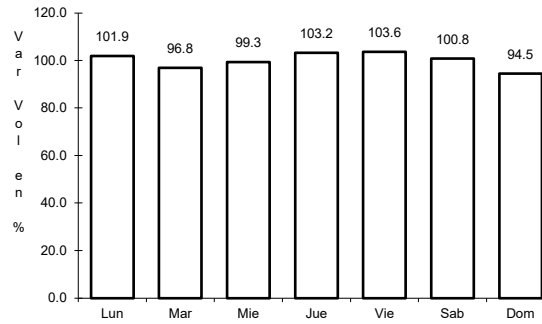
40 CARR: San Antonio - Puerto Angel

CLAVE:

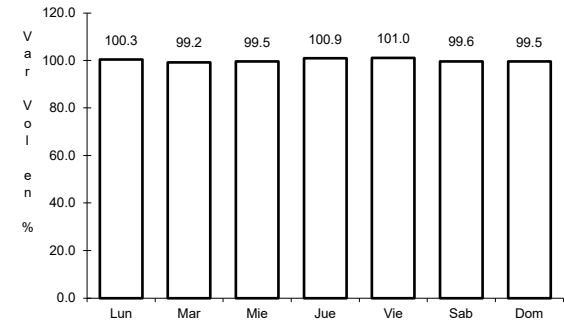
ruta: OAX



Km: 0.00 Tipo: 3 Sent: 0



Km: 7.30 Tipo: 1 Sent: 0

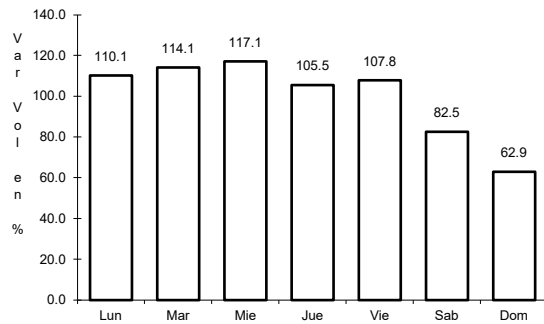


Km: 7.30 Tipo: 3 Sent: 0

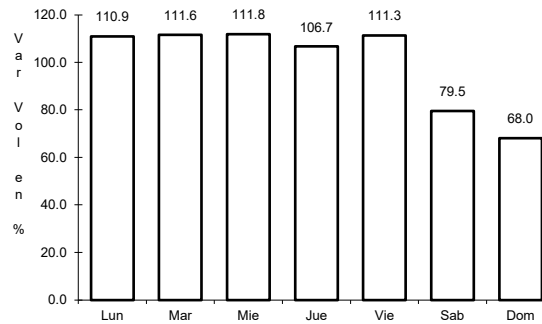
41 CARR: T. C. (Oaxaca - Puerto Ángel) - Puerto Escondido

CLAVE: 20009

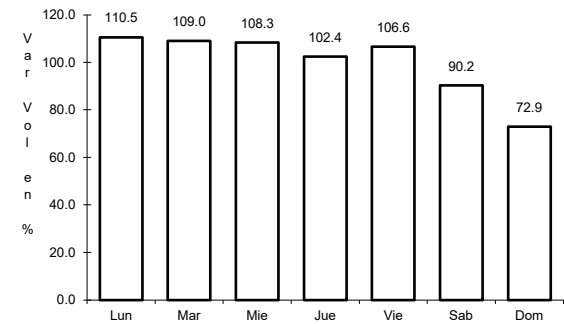
ruta: MEX-OAX-161



Km: 0.00 Tipo: 3 Sent: 1



Km: 0.00 Tipo: 3 Sent: 2

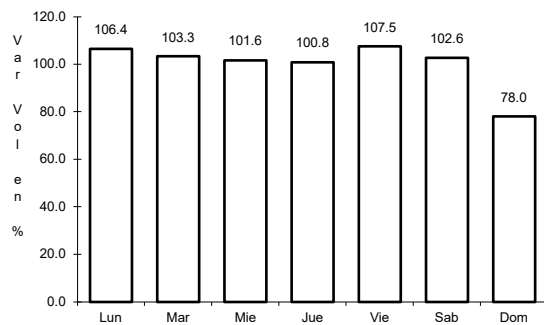


Km: 248.00 Tipo: 1 Sent: 0

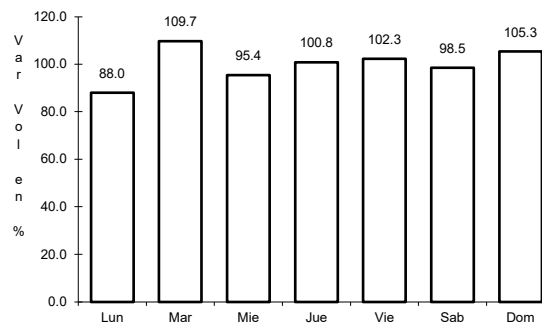
42 CARR: Tehuacán - Huitzo

CLAVE: 00211

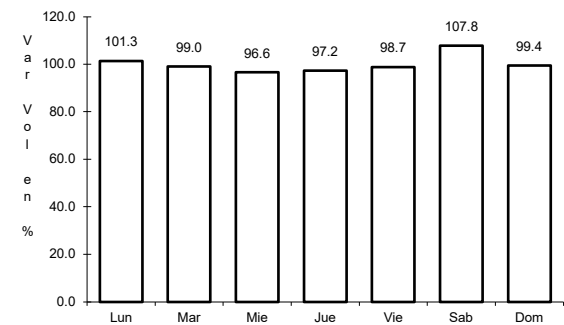
ruta: PUE-MEX-135



Km: 0.00 Tipo: 3 Sent: 0

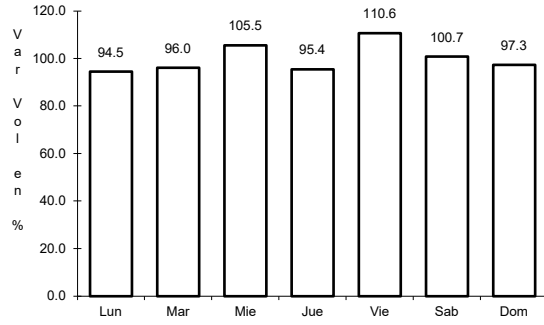


Km: 118.80 Tipo: 1 Sent: 0



Km: 202.70 Tipo: 1 Sent: 0

43 CARR: Teotitlán de Flores Magón - Tuxtepec

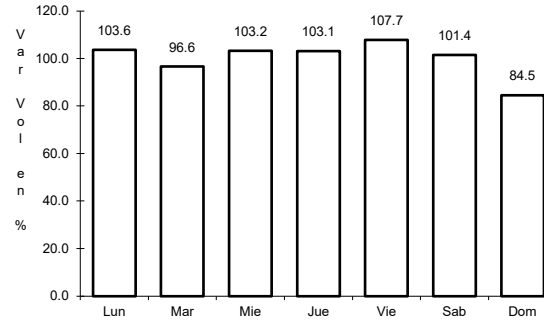


Km: 0.00

Tipo: 3

Sent: 0

CLAVE: 00108

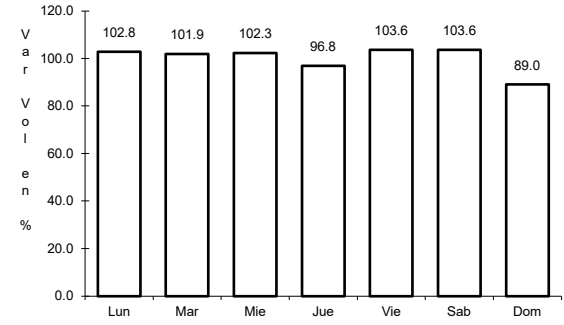


Km: 65.00

Tipo: 1

Sent: 0

RUTA: OAX-PUE-MEX-182



Km: 185.00

Tipo: 1

Sent: 0

